

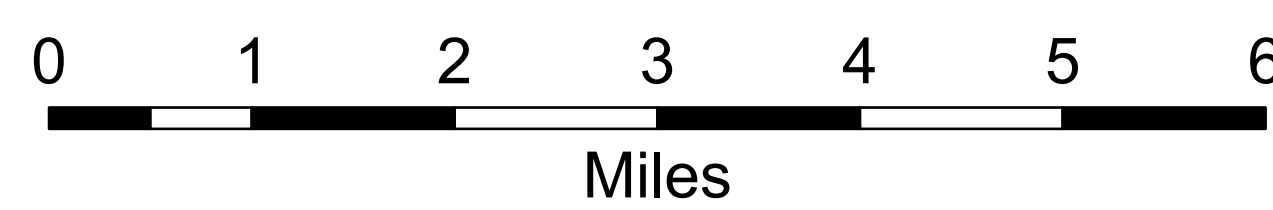
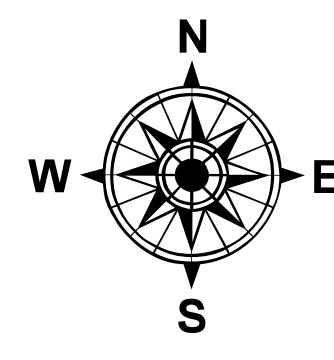
Air Operations

Town Gulch
ORWWF-000431
08/10/2024 Day

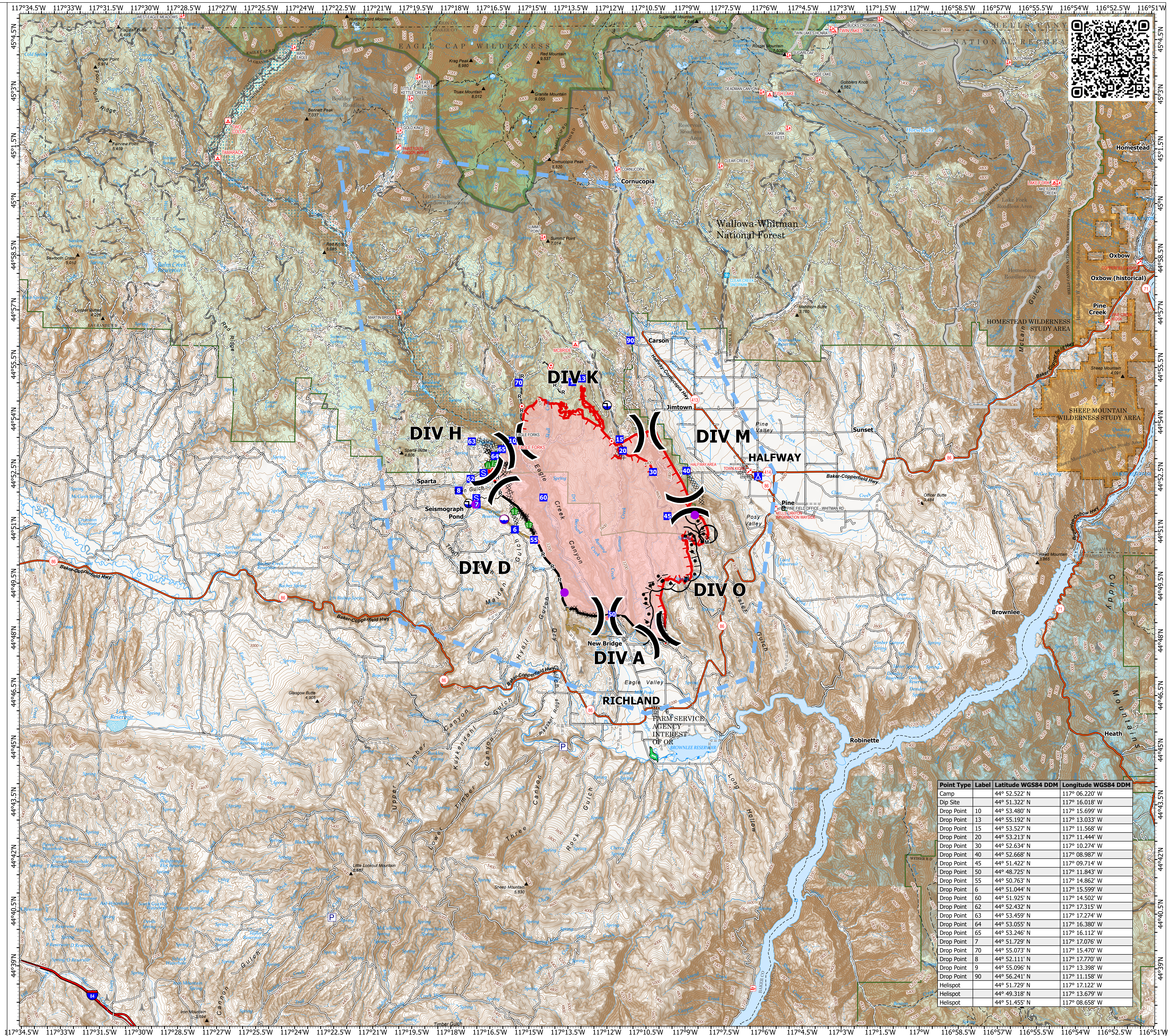
19,251 acres at 20240808 2134hrs

Legend

- Air Operations**
- Helispot
- Assignment Breaks
- × Division Break
- Logistics**
- Drop Point
- Camp
- Staging Area
- Fire**
- Hot Spot - Spot Fire
- Reference**
- Other
- Landmark
- Gate
- Bridge
- Repair**
- Stream Crossing
- Road Repair
- Repair Point
- Fence - Cut/Damaged
- Water**
- Dip Site
- Draft Site
- Ops Completed**
- Completed Burnout
- Completed Dozer Line
- Completed Hand Line
- Completed Mixed Construction Line
- Completed Road as Line
- Reference**
- Access Route
- Other
- Repair**
- Road Repair
- Air Ops**
- Retardant Drop
- Temporary Flight Restriction
- Fire Perimeter**
- Fire Edge (Field Collection)
- FC Line Type**
- Contained
- Uncontained
- Polygon Type**
- Wildfire Daily Fire Perimeter
- USFS Roadless Areas
- MANG_NAME**
- Bureau of Land Management WSA
- FS Wilderness Boundary
- Other Designated Boundary
- OWNERCLASSIFICATION**
- Forest Service Land
- ▲ Tower 30' - 200'
- ▲ Towers of Unknown Height



1:60,000 | SA Blue Team | 8/9/2024 2030
Acres from IR and GPS
North American 1983 Datum. LatLong Grid



| Point Type | Label | Latitude WGS84 DDM | Longitude WGS84 DDM |
|------------|-------|--------------------|---------------------|
| Camp | | 44° 52.522' N | 117° 06.220' W |
| Dip Site | | 44° 51.322' N | 117° 16.018' W |
| Drop Point | 10 | 44° 53.480' N | 117° 15.699' W |
| Drop Point | 13 | 44° 55.192' N | 117° 13.033' W |
| Drop Point | 15 | 44° 53.527' N | 117° 11.568' W |
| Drop Point | 20 | 44° 53.213' N | 117° 11.444' W |
| Drop Point | 30 | 44° 52.634' N | 117° 10.274' W |
| Drop Point | 40 | 44° 52.668' N | 117° 08.987' W |
| Drop Point | 45 | 44° 51.422' N | 117° 09.714' W |
| Drop Point | 50 | 44° 48.725' N | 117° 11.843' W |
| Drop Point | 55 | 44° 50.763' N | 117° 14.862' W |
| Drop Point | 6 | 44° 51.044' N | 117° 15.599' W |
| Drop Point | 60 | 44° 51.925' N | 117° 14.502' W |
| Drop Point | 62 | 44° 52.432' N | 117° 17.315' W |
| Drop Point | 63 | 44° 53.459' N | 117° 17.274' W |
| Drop Point | 64 | 44° 53.055' N | 117° 16.380' W |
| Drop Point | 65 | 44° 53.246' N | 117° 16.112' W |
| Drop Point | 7 | 44° 51.729' N | 117° 17.076' W |
| Drop Point | 70 | 44° 55.073' N | 117° 15.470' W |
| Drop Point | 8 | 44° 52.111' N | 117° 17.770' W |
| Drop Point | 9 | 44° 55.096' N | 117° 13.398' W |
| Drop Point | 90 | 44° 56.241' N | 117° 11.158' W |
| Helispot | | 44° 51.729' N | 117° 17.122' W |
| Helispot | | 44° 49.318' N | 117° 13.679' W |
| Helispot | | 44° 51.455' N | 117° 08.658' W |