

Air Operations

Limepoint

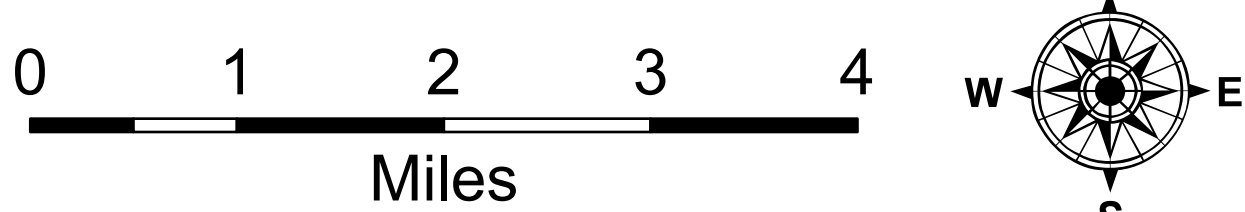
2024-IDPAF-005464

08/10/2024 Day

28,115 acres at 08/08/2024 @ 2216

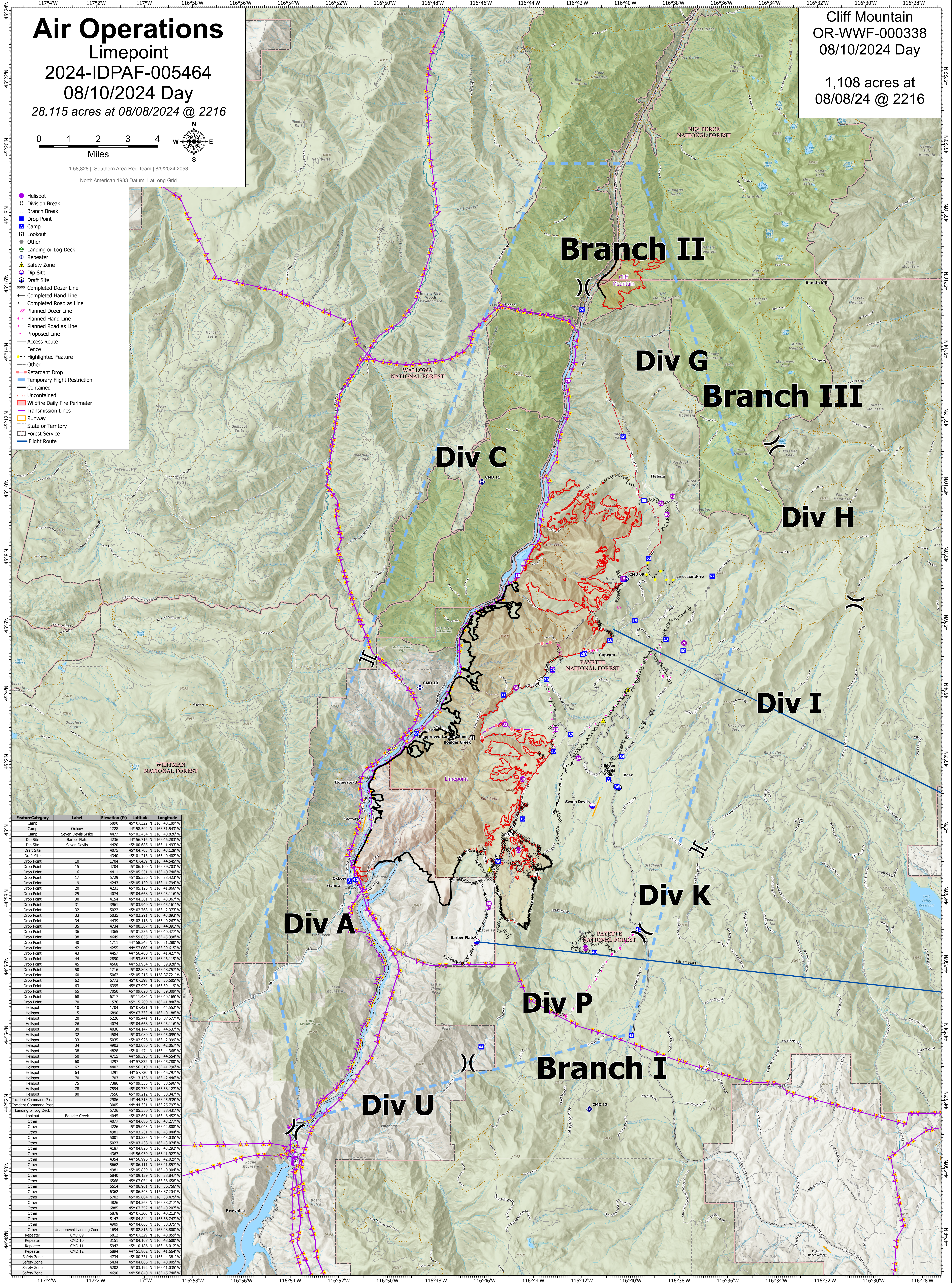
Cliff Mountain
OR-WWF-000338
08/10/2024 Day

1,108 acres at
08/08/24 @ 2216



1:58,828 | Southern Area Red Team | 8/9/2024 2053
North American 1983 Datum, Lat/Long Grid

- Helispot
- () Division Break
- | | Branch Break
- Drop Point
- ▲ Camp
- Lookout
- Other
- ◆ Landing or Log Deck
- ◆ Repeater
- ▲ Safety Zone
- ▲ Dip Site
- ▲ Draft Site
- Completed Dozer Line
- Completed Hand Line
- Completed Road as Line
- Planned Dozer Line
- Planned Hand Line
- Planned Road as Line
- Proposed Line
- Access Route
- Fence
- Highlighted Feature
- Other
- Retardant Drop
- Temporary Flight Restriction
- Contained
- Uncontained
- Wildfire Daily Fire Perimeter
- Transmission Lines
- Runway
- State or Territory
- Forest Service
- Flight Route



FeatureCategory	Label	Elevation (ft)	Latitude	Longitude
Camp	Oxbow	1728	44° 58.502' N	116° 51.543' W
Camp	Seven Devils Spike	4477	45° 01.454' N	116° 40.828' W
Dip Site	Barber Flats	4236	44° 56.510' N	116° 46.280' W
Dip Site	Seven Devils	4420	45° 00.685' N	116° 41.493' W
Draft Site		4075	45° 04.703' N	116° 43.128' W
Drop Point		4340	45° 01.213' N	116° 40.402' W
Drop Point	10	1704	45° 07.439' N	116° 44.540' W
Drop Point	15	4704	45° 06.100' N	116° 39.703' W
Drop Point	16	4411	45° 05.531' N	116° 40.740' W
Drop Point	17	5729	45° 05.550' N	116° 38.423' W
Drop Point	19	4243	45° 05.139' N	116° 41.798' W
Drop Point	20	4231	45° 05.125' N	116° 41.866' W
Drop Point	25	4074	45° 04.668' N	116° 43.116' W
Drop Point	30	4154	45° 04.381' N	116° 43.367' W
Drop Point	31	3961	45° 03.940' N	116° 45.161' W
Drop Point	32	5022	45° 02.768' N	116° 42.373' W
Drop Point	33	5035	45° 02.291' N	116° 43.093' W
Drop Point	34	4439	45° 02.118' N	116° 43.267' W
Drop Point	35	4734	45° 00.307' N	116° 44.391' W
Drop Point	36	4365	45° 01.236' N	116° 40.477' W
Drop Point	38	4649	44° 59.055' N	116° 45.398' W
Drop Point	40	1711	44° 58.549' N	116° 43.267' W
Drop Point	42	4255	44° 57.060' N	116° 39.615' W
Drop Point	43	4457	44° 56.400' N	116° 41.427' W
Drop Point	44	2890	44° 53.635' N	116° 46.119' W
Drop Point	45	4568	44° 53.547' N	116° 43.920' W
Drop Point	50	1716	45° 02.808' N	116° 48.757' W
Drop Point	60	5062	45° 05.215' N	116° 37.721' W
Drop Point	62	6773	45° 07.396' N	116° 36.505' W
Drop Point	63	6395	45° 07.527' N	116° 37.207' W
Drop Point	65	7050	45° 09.620' N	116° 38.309' W
Drop Point	68	6717	45° 11.484' N	116° 40.165' W
Drop Point	70	1576	45° 15.209' N	116° 43.846' W
Helispot	10	1704	45° 07.431' N	116° 44.552' W
Helispot	15	6890	45° 07.333' N	116° 40.188' W
Helispot	20	5226	45° 05.441' N	116° 37.677' W
Helispot	25	4274	45° 04.668' N	116° 43.116' W
Helispot	30	4036	45° 04.147' N	116° 44.637' W
Helispot	32	4584	45° 03.080' N	116° 45.095' W
Helispot	33	5035	45° 02.520' N	116° 43.999' W
Helispot	34	4903	45° 02.080' N	116° 43.850' W
Helispot	38	4828	45° 01.474' N	116° 44.368' W
Helispot	50	4715	44° 59.395' N	116° 44.554' W
Helispot	60	4297	44° 57.832' N	116° 45.780' W
Helispot	62	4402	44° 56.819' N	116° 43.790' W
Helispot	64	4291	44° 57.720' N	116° 45.797' W
Helispot	70	1703	45° 13.136' N	116° 42.446' W
Helispot	75	7386	45° 09.535' N	116° 38.596' W
Helispot	78	7594	45° 09.739' N	116° 38.177' W
Helispot	80	7556	45° 09.212' N	116° 38.347' W
Incident Command Post		2986	44° 44.313' N	116° 25.935' W
Incident Command Post		3005	44° 44.311' N	116° 25.707' W
Landing or Log Deck		5726	45° 05.550' N	116° 38.431' W
Lookout	Boulder Creek	4045	45° 02.691' N	116° 46.452' W
Other		4077	45° 04.686' N	116° 43.277' W
Other		4236	45° 05.043' N	116° 43.850' W
Other		4981	45° 03.231' N	116° 43.044' W
Other		5001	45° 03.335' N	116° 43.035' W
Other		5023	45° 03.438' N	116° 43.074' W
Other		4187	45° 04.828' N	116° 43.250' W
Other		4367	44° 56.939' N	116° 41.927' W
Other		4354	44° 56.996' N	116° 42.029' W
Other		5662	45° 06.311' N	116° 41.857' W
Other		4991	45° 05.639' N	116° 43.904' W
Other		6840	45° 09.139' N	116° 38.847' W
Other		6568	45° 07.054' N	116° 36.658' W
Other		6514	45° 06.961' N	116° 36.726' W
Other		6362	45° 06.547' N	116° 37.207' W
Other		5702	45° 05.604' N	116° 38.475' W
Other		4826	45° 04.563' N	116° 38.217' W
Other		6865	45° 07.352' N	116° 40.207' W
Other		6878	45° 07.360' N	116° 40.153' W
Other		5147	45° 04.844' N	116° 38.747' W
Other		4909	45° 04.663' N	116° 38.375' W
Other	Unapproved Landing Zone	1694	45° 02.615' N	116° 43.850' W
Repeater	CMD 09	6812	45° 07.329' N	116° 40.059' W
Repeater	CMD 10	3151	45° 04.167' N	116° 48.600' W
Repeater	CMD 11	5942	45° 10.186' N	116° 46.012' W
Repeater	CMD 12	6894	44° 51.862' N	116° 41.664' W
Safety Zone		4734	45° 00.331' N	116° 44.381' W
Safety Zone		5434	45° 04.086' N	116° 40.005' W
Safety Zone		5202	45° 03.192' N	116° 41.035' W
Safety Zone		4690	44° 58.880' N	116° 45.740' W