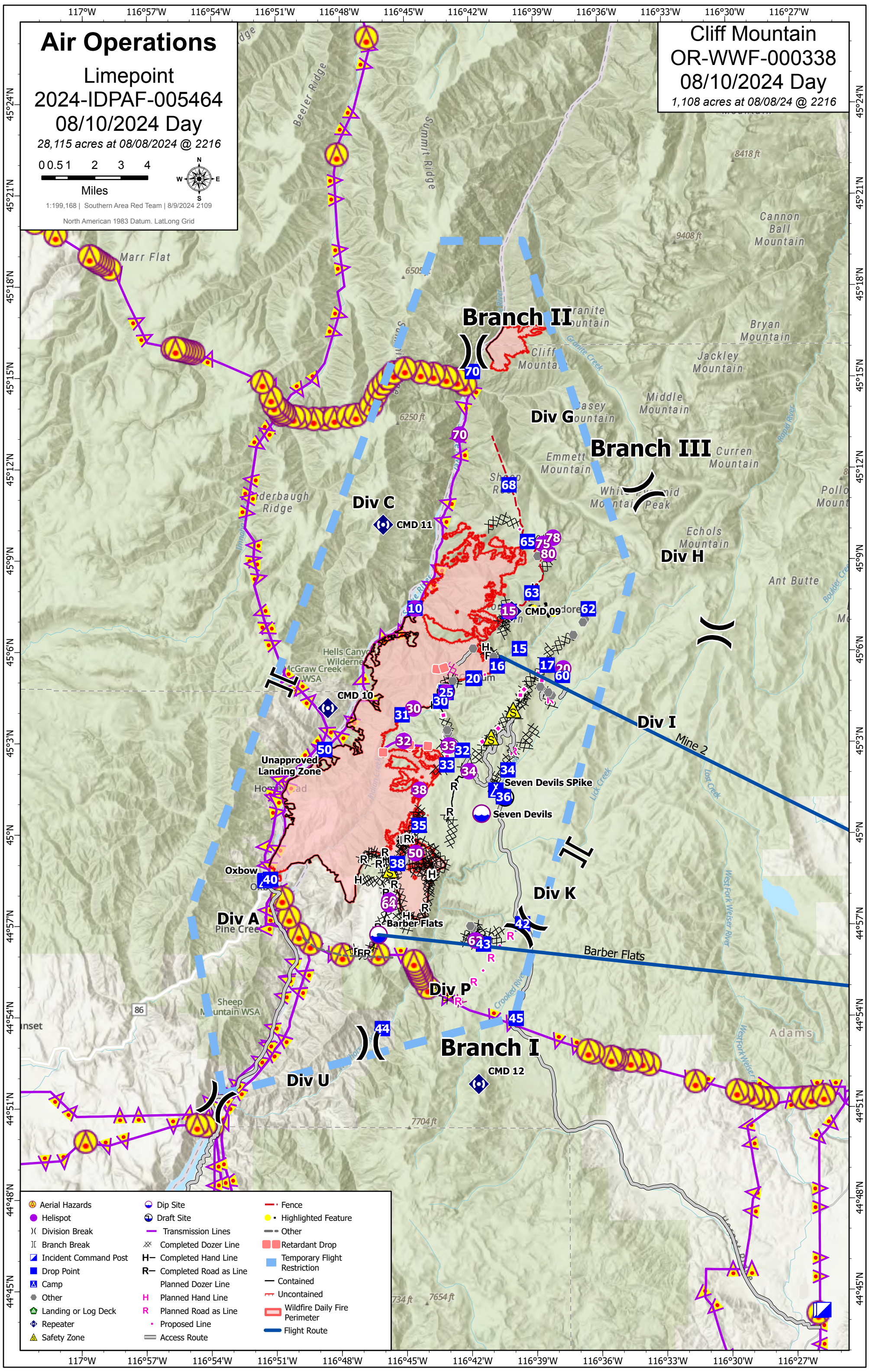


Air Operations

Limepoint
2024-IDPAF-005464
08/10/2024 Day
28,115 acres at 08/08/2024 @ 2216



Cliff Mountain
OR-WWF-000338
08/10/2024 Day
1,108 acres at 08/08/24 @ 2216



Aerial Hazard	Dip Site	Fence
Helispot	Draft Site	Highlighted Feature
Division Break	Transmission Lines	Other
Branch Break	Completed Dozer Line	Retardant Drop
Incident Command Post	Completed Hand Line	Temporary Flight Restriction
Drop Point	Completed Road as Line	Contained
Camp	Planned Dozer Line	Uncontained
Other	Planned Hand Line	Wildfire Daily Fire Perimeter
Landing or Log Deck	Planned Road as Line	Flight Route
Repeater	Proposed Line	
Safety Zone	Access Route	

FeatureCategory	Label	Elevation (ft)	Latitude	Longitude
Camp		6890	45° 07.322' N	116° 40.189' W
Camp	Oxbow	1728	44° 58.502' N	116° 51.543' W
Camp	Seven Devils SPIke	4477	45° 01.454' N	116° 40.826' W
Dip Site	Barber Flats	4236	44° 56.716' N	116° 46.283' W
Dip Site	Seven Devils	4420	45° 00.685' N	116° 41.493' W
Draft Site		4075	45° 04.703' N	116° 43.128' W
Draft Site		4340	45° 01.213' N	116° 40.402' W
Drop Point	10	1704	45° 07.439' N	116° 44.545' W
Drop Point	15	4704	45° 06.100' N	116° 39.703' W
Drop Point	16	4411	45° 05.531' N	116° 40.740' W
Drop Point	17	5729	45° 05.556' N	116° 38.423' W
Drop Point	19	4243	45° 05.139' N	116° 41.794' W
Drop Point	20	4231	45° 05.125' N	116° 41.866' W
Drop Point	25	4074	45° 04.668' N	116° 43.116' W
Drop Point	30	4154	45° 04.381' N	116° 43.367' W
Drop Point	31	3961	45° 03.940' N	116° 45.161' W
Drop Point	32	5022	45° 02.768' N	116° 42.373' W
Drop Point	33	5035	45° 02.291' N	116° 43.093' W
Drop Point	34	4439	45° 02.118' N	116° 40.267' W
Drop Point	35	4734	45° 00.307' N	116° 44.391' W
Drop Point	36	4365	45° 01.236' N	116° 40.477' W
Drop Point	38	4649	44° 59.055' N	116° 45.398' W
Drop Point	40	1711	44° 58.545' N	116° 51.280' W
Drop Point	42	4255	44° 57.060' N	116° 39.615' W
Drop Point	43	4457	44° 56.400' N	116° 41.427' W
Drop Point	44	2890	44° 53.635' N	116° 46.119' W
Drop Point	45	4568	44° 53.954' N	116° 39.928' W
Drop Point	50	1716	45° 02.808' N	116° 48.757' W
Drop Point	60	5062	45° 05.215' N	116° 37.721' W
Drop Point	62	6773	45° 07.398' N	116° 36.505' W
Drop Point	63	6395	45° 07.929' N	116° 39.119' W
Drop Point	65	7050	45° 09.620' N	116° 39.309' W
Drop Point	68	6717	45° 11.484' N	116° 40.165' W
Drop Point	70	1576	45° 15.209' N	116° 41.846' W
Helispot	10	1704	45° 07.431' N	116° 44.552' W
Helispot	15	6890	45° 07.333' N	116° 40.188' W
Helispot	20	5226	45° 05.441' N	116° 37.677' W
Helispot	26	4074	45° 04.668' N	116° 43.116' W
Helispot	30	4036	45° 04.147' N	116° 44.637' W
Helispot	32	4584	45° 03.080' N	116° 45.095' W
Helispot	33	5035	45° 02.926' N	116° 42.999' W
Helispot	34	4903	45° 02.080' N	116° 42.067' W

FeatureCategory	Label	Elevation (ft)	Latitude	Longitude
Helispot	38	4828	45° 01.474' N	116° 44.368' W
Helispot	50	4715	44° 59.395' N	116° 44.554' W
Helispot	60	4297	44° 57.832' N	116° 45.780' W
Helispot	62	4402	44° 56.519' N	116° 41.796' W
Helispot	64	4291	44° 57.720' N	116° 45.797' W
Helispot	70	1703	45° 13.136' N	116° 42.446' W
Helispot	75	7386	45° 09.535' N	116° 38.596' W
Helispot	78	7594	45° 09.739' N	116° 38.127' W
Helispot	80	7556	45° 09.212' N	116° 38.347' W
Incident Command Post		2986	44° 44.313' N	116° 25.935' W
Incident Command Post		3005	44° 44.331' N	116° 25.797' W
Landing or Log Deck		5726	45° 05.550' N	116° 38.431' W
Lookout	Boulder Creek	4045	45° 02.691' N	116° 46.452' W
Other		4077	45° 04.686' N	116° 43.277' W
Other		4226	45° 05.043' N	116° 42.808' W
Other		4981	45° 03.231' N	116° 43.044' W
Other		5001	45° 03.335' N	116° 43.035' W
Other		5023	45° 03.438' N	116° 43.074' W
Other		4187	45° 04.826' N	116° 43.292' W
Other		4367	44° 56.939' N	116° 41.927' W
Other		4354	44° 56.996' N	116° 42.029' W
Other		5662	45° 06.111' N	116° 41.857' W
Other		4981	45° 05.839' N	116° 40.904' W
Other		6840	45° 09.139' N	116° 38.847' W
Other		6568	45° 07.054' N	116° 36.658' W
Other		6514	45° 06.961' N	116° 36.756' W
Other		6362	45° 06.543' N	116° 37.204' W
Other		5702	45° 05.604' N	116° 38.475' W
Other		4826	45° 04.563' N	116° 38.217' W
Other		6885	45° 07.352' N	116° 40.207' W
Other		6878	45° 07.366' N	116° 40.213' W
Other		5147	45° 04.844' N	116° 38.747' W
Other		4909	45° 04.663' N	116° 38.375' W
Other	Unapproved Landing Zone	1694	45° 02.816' N	116° 48.800' W
Repeater	CMD 09	6812	45° 07.329' N	116° 40.059' W
Repeater	CMD 10	3151	45° 04.167' N	116° 48.600' W
Repeater	CMD 11	5942	45° 10.186' N	116° 46.012' W
Repeater	CMD 12	6894	44° 51.802' N	116° 41.664' W
Safety Zone		4734	45° 00.331' N	116° 44.381' W
Safety Zone		5434	45° 04.086' N	116° 40.005' W
Safety Zone		5202	45° 03.192' N	116° 41.035' W
Safety Zone		4690	44° 58.840' N	116° 45.740' W