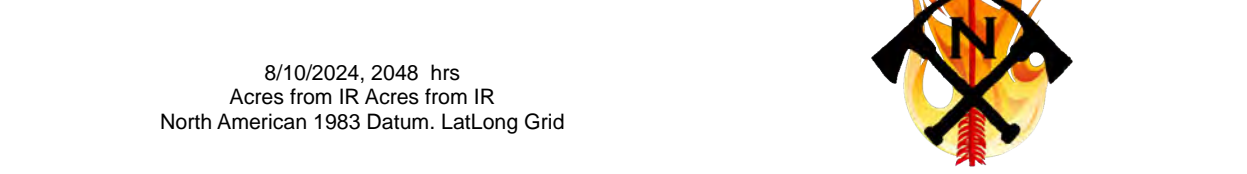
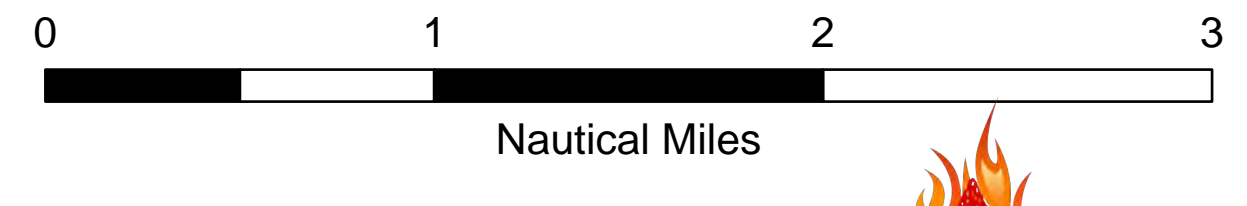
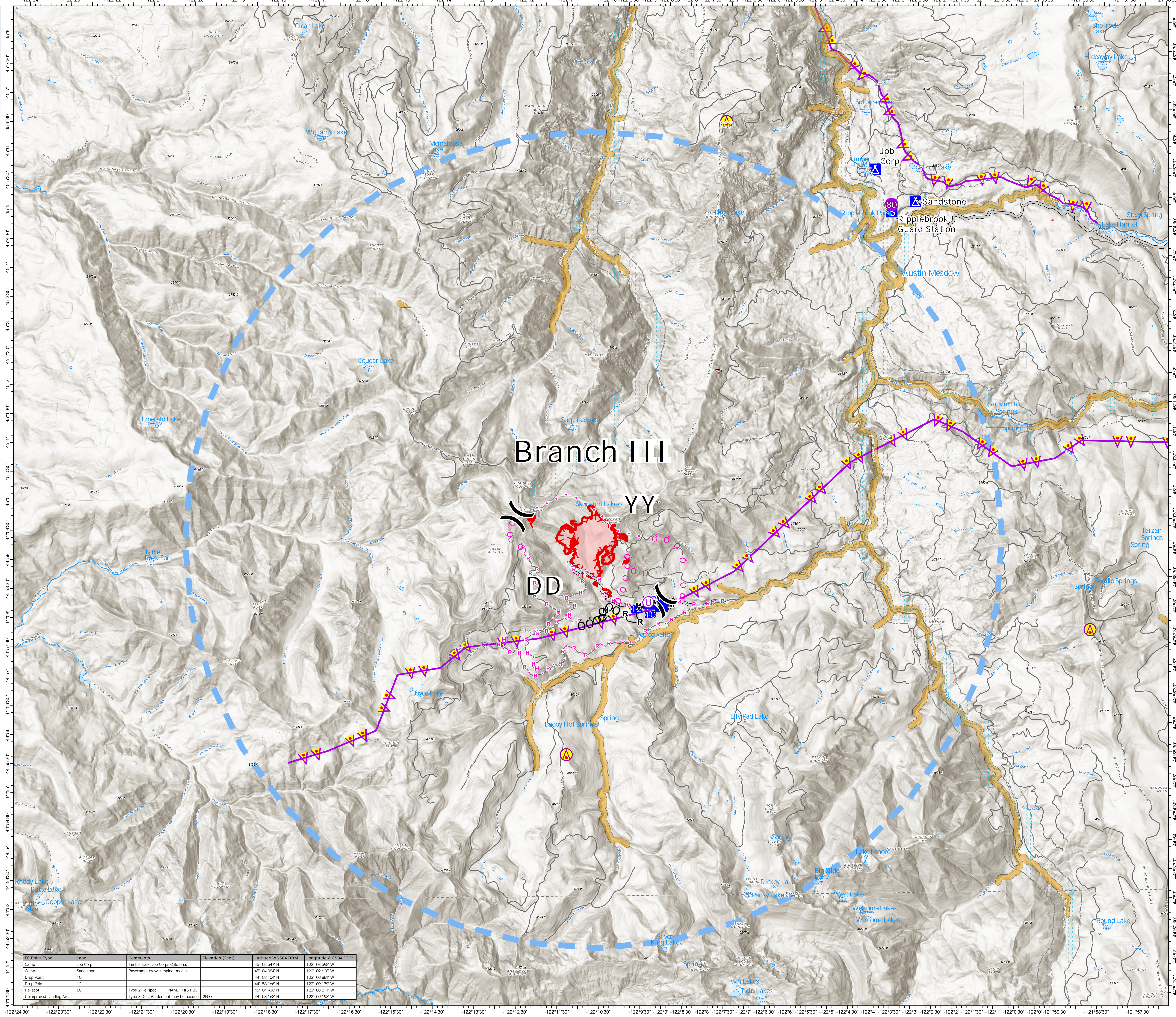




- Aerial Hazard
- Helispot
- Unimproved Landing Area
- Division Break
- Drop Point
- Camp
- Staging Area
- Completed Dozer Line
- Completed Hand Line
- Completed Mixed Construction Line
- Completed Road as Line
- Planned Dozer Line
- Planned Hand Line
- Planned Road as Line
- Proposed Line
- Access Route
- Aerial Hazard
- Temporary Flight Restriction
- Uncontained
- Wildfire Daily Fire Perimeter
- Fire Retardant Avoidance
- Roads
- Wild and Scenic River



Drop Point Type	Label	Comments	Elevation (Feet)	Latitude WGS84 DDM	Longitude WGS84 DDM
Camp	Job Corp	Timber Lake Job Corps Cafeteria	45° 05.547' N	122° 03.598' W	
Camp	Sandstone	Basecamp, crew camping, medical	45° 04.964' N	122° 02.628' W	
Drop Point	10		44° 58.104' N	122° 08.881' W	
Drop Point	12		44° 58.166' N	122° 09.179' W	
Helispot	80	Type 2 Helispot NAME THIS H80	45° 04.936' N	122° 03.211' W	
Unimproved Landing Area		Type 3 Dust Abatement may be needed 2500	44° 58.148' N	122° 09.193' W	