

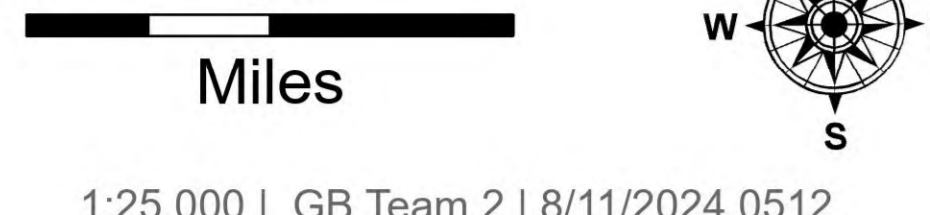
# Air Ops

## Wolf Creek

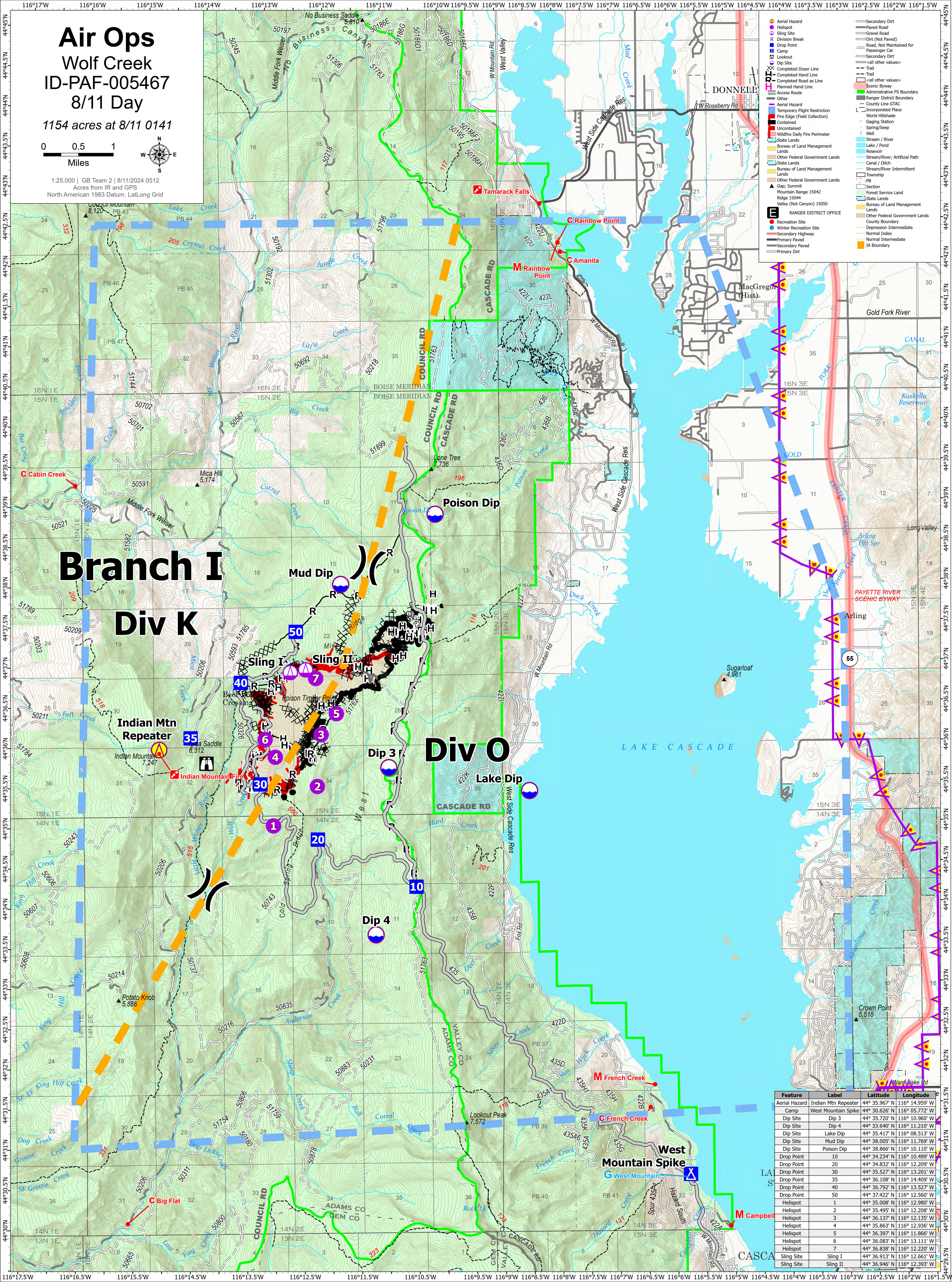
### ID-PAF-005467

### 8/11 Day

1154 acres at 8/11 0141



1:25,000 | GB Team 2 | 8/11/2024 0512  
Acres from IR and GPS  
North American 1983 Datum, Lat/Long Grid



- Aerial Hazard
- Helispot
- Sling Site
- Division Break
- Drop Point
- Camp
- Dip Site
- Completed Dozer Line
- Completed Hand Line
- Planned Hand Line
- Access Route
- Other
- Temporary Flight Restriction
- Fire Edge (Field Collection)
- Contained
- Uncontained
- Wildfire Daily Fire Perimeter
- Bureau of Land Management
- Other Federal Government Lands
- State Lands
- Bureau of Land Management
- Lands
- Other Federal Government Lands
- Gap; Summit
- Mountain Range 15042
- Ridge 15044
- Valley (Not Canyon) 15050
- Recreation Site
- Winter Recreation Site
- Primary Paved
- Secondary Paved
- Secondary Dirt
- Primary Dirt
- Secondary Dirt
- Gravel Road
- Dirt (Not Paved)
- Road, Not Maintained for Passenger Car
- Secondary Dirt
- Trail
- Trail
- Trail
- Scenic Byway
- Administrative FS Boundary
- Ranger District Boundary
- County Line GTAC
- Incorporated Place
- World Hillshade
- Gaging Station
- Spring/Seep
- Stream / River
- Lake / Pond
- Reservoir
- Stream/River; Artificial Path
- Canal / Ditch
- Stream/River Intermittent
- Township
- Section
- Forest Service Land
- State Lands
- Bureau of Land Management
- Lands
- Other Federal Government Lands
- County Boundary
- Depression Intermediate
- Normal Intermediate
- IA Boundary

Feature	Label	Latitude	Longitude
Aerial Hazard	Indian Mtn Repeater	44° 35.967' N	116° 14.959' W
Camp	West Mountain Spike	44° 30.626' N	116° 05.772' W
Dip Site	Dip 3	44° 35.720' N	116° 10.960' W
Dip Site	Dip 4	44° 33.640' N	116° 11.210' W
Dip Site	Lake Dip	44° 35.417' N	116° 08.513' W
Dip Site	Mud Dip	44° 38.005' N	116° 11.769' W
Dip Site	Poison Dip	44° 38.866' N	116° 10.110' W
Drop Point	10	44° 34.234' N	116° 10.499' W
Drop Point	20	44° 34.832' N	116° 12.209' W
Drop Point	30	44° 35.527' N	116° 13.201' W
Drop Point	35	44° 36.108' N	116° 14.409' W
Drop Point	40	44° 36.792' N	116° 15.527' W
Drop Point	50	44° 37.422' N	116° 12.560' W
Helispot	1	44° 35.008' N	116° 12.980' W
Helispot	2	44° 35.495' N	116° 12.208' W
Helispot	3	44° 36.137' N	116° 12.135' W
Helispot	4	44° 35.863' N	116° 11.769' W
Helispot	5	44° 36.397' N	116° 11.866' W
Helispot	6	44° 36.083' N	116° 13.111' W
Helispot	7	44° 36.838' N	116° 12.220' W
Sling Site	Sling I	44° 36.913' N	116° 12.661' W
Sling Site	Sling II	44° 36.946' N	116° 12.393' W