

Pilot Town Gulch

ORWWF-000431
08/11/2024 Day
18,552 acres at 20240810 1640hrs

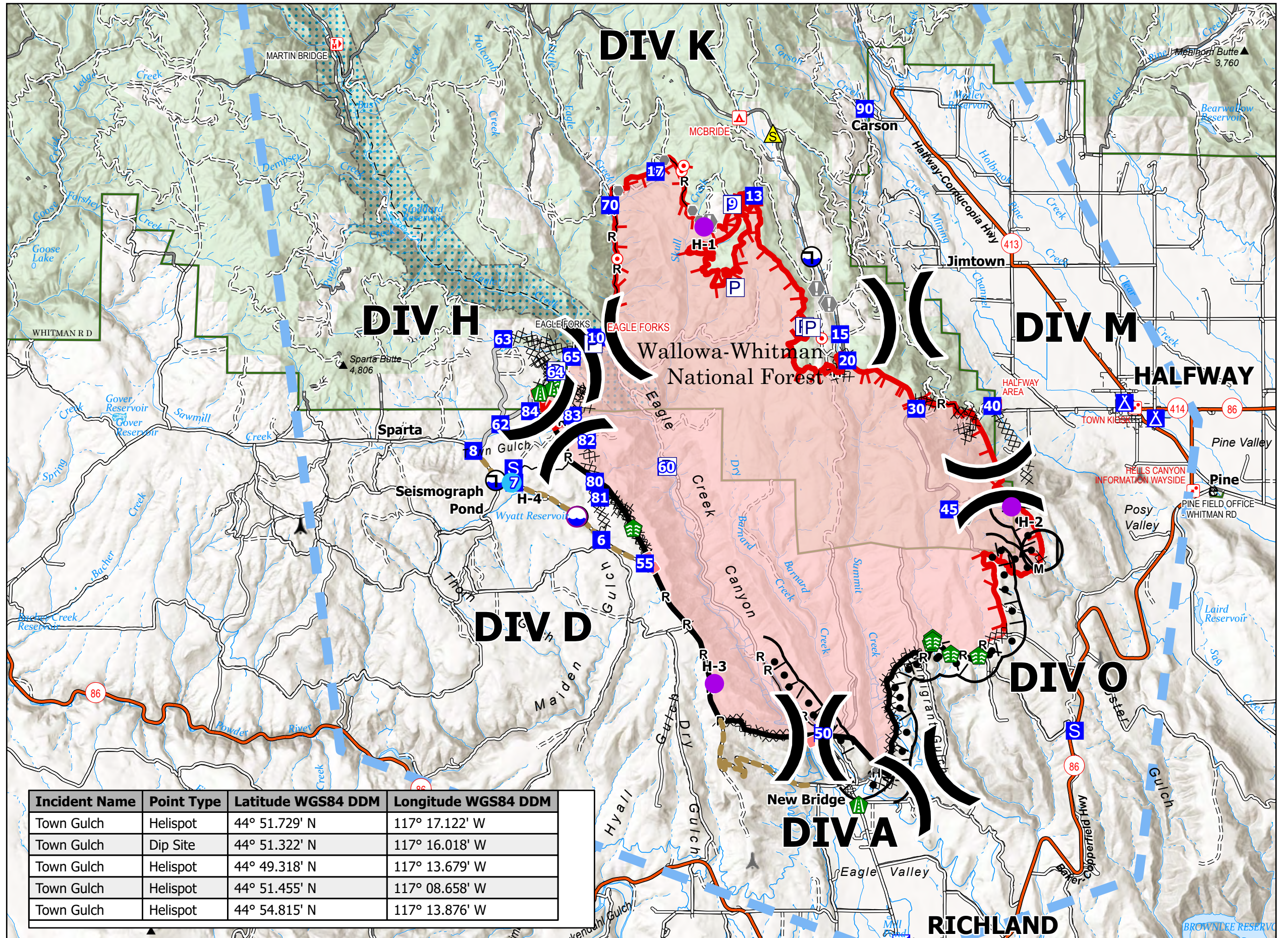
Legend

- Air Operations**
- Helispot
- Assignment Breaks**
- () Division Break
- Logistics**
- Incident Command Post
- Drop Point
- ▲ Camp
- Staging Area
- Fire**
- Hot Spot - Spot Fire
- Reference**
- Ⓜ Value at Risk
- Other
- Landmark
- Ⓜ Gate
- Ⓜ Bridge
- Repair**
- Stream Crossing
- Road Repair
- Repair Point
- Fence - Cut/Damaged
- Safety**
- ▲ Safety Zone
- Water**
- Dip Site
- Draft Site
- Ops Completed**
- Completed Burnout
- Completed Dozer Line
- H— Completed Hand Line
- M— Completed Mixed Construction Line
- R— Completed Road as Line
- Reference**
- Access Route
- Other
- Repair**
- Road Repair
- Air Ops**
- Retardant Drop
- Temporary Flight Restriction
- Fire Perimeter**
- Fire Edge (Field Collection)
- FC Line Type
- Contained
- Uncontained
- Polygon Type**
- Wildfire Daily Fire Perimeter

0 0.25 0.5 1 1.5
Miles



1:48,000 | SA Blue Team | 8/10/2024 2022
Acres from IR and GPS
North American 1983 Datum, LatLong Grid



Incident Name	Point Type	Latitude WGS84 DDM	Longitude WGS84 DDM
Town Gulch	Helispot	44° 51.729' N	117° 17.122' W
Town Gulch	Dip Site	44° 51.322' N	117° 16.018' W
Town Gulch	Helispot	44° 49.318' N	117° 13.679' W
Town Gulch	Helispot	44° 51.455' N	117° 08.658' W
Town Gulch	Helispot	44° 54.815' N	117° 13.876' W