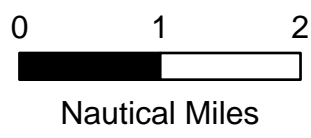


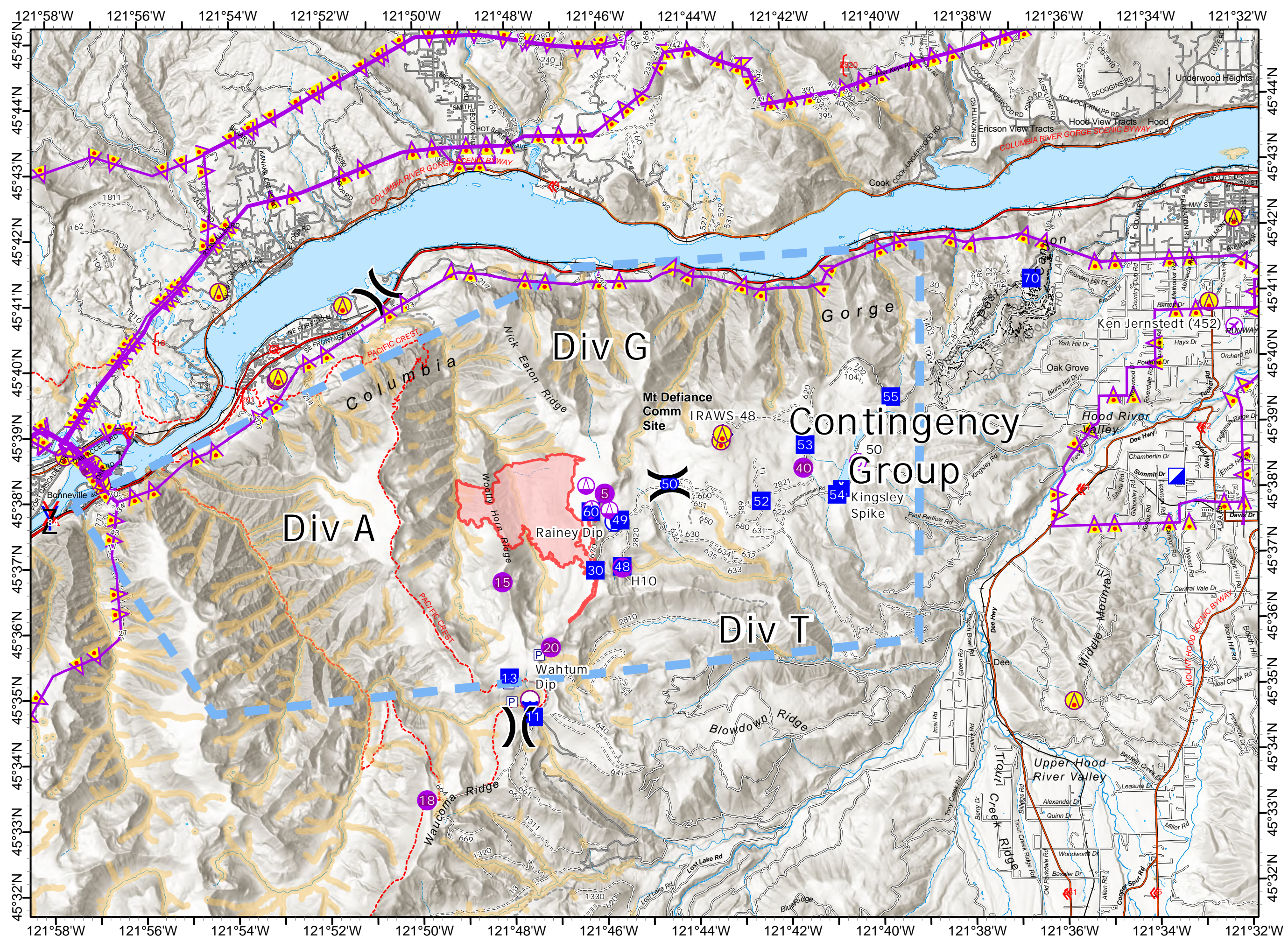
Air Ops
 Air Operations
 Whisky Creek
 OR-MHF-000639
 08/11/2024 Day
 1,743 acres
 at 20240810 @ 0321 PDT



- Aerial Hazard
- Airstrip or Airport
- Helispot
- Sling Site
- Unimproved Landing Area
- Division Break
- Incident Command Post
- Drop Point
- Camp
- Mobile Weather Unit
- Dip Site
- Restricted Water Source
- Wildfire Daily Fire Perimeter
- Aerial Hazard
- Temporary Flight Restriction
- Retardant Avoidance Areas



R1T2GIS_User
 8/10/2024, 2129 hrs
 Acres from IR
 North American 1983 Datum, LatLong Grid



Incident Name	FC Point Type	Label	Comments	Elevation (Feet)	Latitude WGS84	Longitude WGS84
Whisky Creek	Airstrip or Airport	Ken Jernstedt (452)		610	45° 40.435' N	121° 32.194' W
Whisky Creek	Camp	Kingsley Spike			45° 38.063' N	121° 40.801' W
Whisky Creek	Dip Site	Wahtum Dip		3780	45° 34.909' N	121° 47.638' W
Whisky Creek	Drop Point	11	DP-11		45° 34.651' N	121° 47.565' W
Whisky Creek	Drop Point	13	DP13		45° 35.252' N	121° 48.074' W
Whisky Creek	Drop Point	30	Please make this a drop point. Thank you!		45° 36.874' N	121° 46.178' W
Whisky Creek	Drop Point	48	DP-48		45° 36.928' N	121° 45.592' W
Whisky Creek	Drop Point	49	DP-49		45° 37.637' N	121° 45.624' W
Whisky Creek	Drop Point	50	DP-50		45° 38.175' N	121° 44.537' W
Whisky Creek	Drop Point	52	DP-52		45° 37.892' N	121° 42.545' W
Whisky Creek	Drop Point	53	DP-53		45° 38.739' N	121° 41.572' W
Whisky Creek	Drop Point	54	DP-54		45° 37.974' N	121° 40.893' W
Whisky Creek	Drop Point	55	DP 55		45° 39.450' N	121° 39.690' W
Whisky Creek	Drop Point	60	Please make this a drop point. Thank you.		45° 37.768' N	121° 46.253' W
Whisky Creek	Drop Point	70	DP 70		45° 41.222' N	121° 36.594' W
Whisky Creek	Helibase	Dallesport	SW Corner of Columbia Gorge Regional Airport	240	45° 36.746' N	121° 10.136' W
Whisky Creek	Helispot	15	Type 3	4445	45° 36.711' N	121° 48.195' W
Whisky Creek	Helispot	18	Type 2 Type 3	4425	45° 33.402' N	121° 49.905' W
Whisky Creek	Helispot	20	Type 2 Type 3	4400	45° 35.707' N	121° 47.167' W
Whisky Creek	Helispot	40	Type 2 Type 3	3515	45° 38.389' N	121° 41.618' W
Whisky Creek	Helispot	5	Type 2 Type 3	4650	45° 38.040' N	121° 45.947' W
Whisky Creek	Helispot	H10	Type 3	3790	45° 36.908' N	121° 45.588' W
Whisky Creek	Incident Command		Hood River Fairgrounds		45° 38.164' N	121° 33.511' W
Whisky Creek	Mobile Weather Unit	IRAWS-48	IRAWS-48		45° 38.915' N	121° 43.356' W
Whisky Creek	Restricted Water	Rainey Dip	Use for hose lay only		45° 37.613' N	121° 45.745' W
Whisky Creek	Sling Site			4535	45° 38.163' N	121° 46.348' W
Whisky Creek	Sling Site				45° 37.794' N	121° 46.245' W
Whisky Creek	Sling Site				45° 37.808' N	121° 46.231' W
Whisky Creek	Sling Site			4570	45° 37.790' N	121° 45.847' W
Whisky Creek	Unimproved Landing	50	Type 3, Kingsley Dam	3190	45° 38.465' N	121° 40.428' W