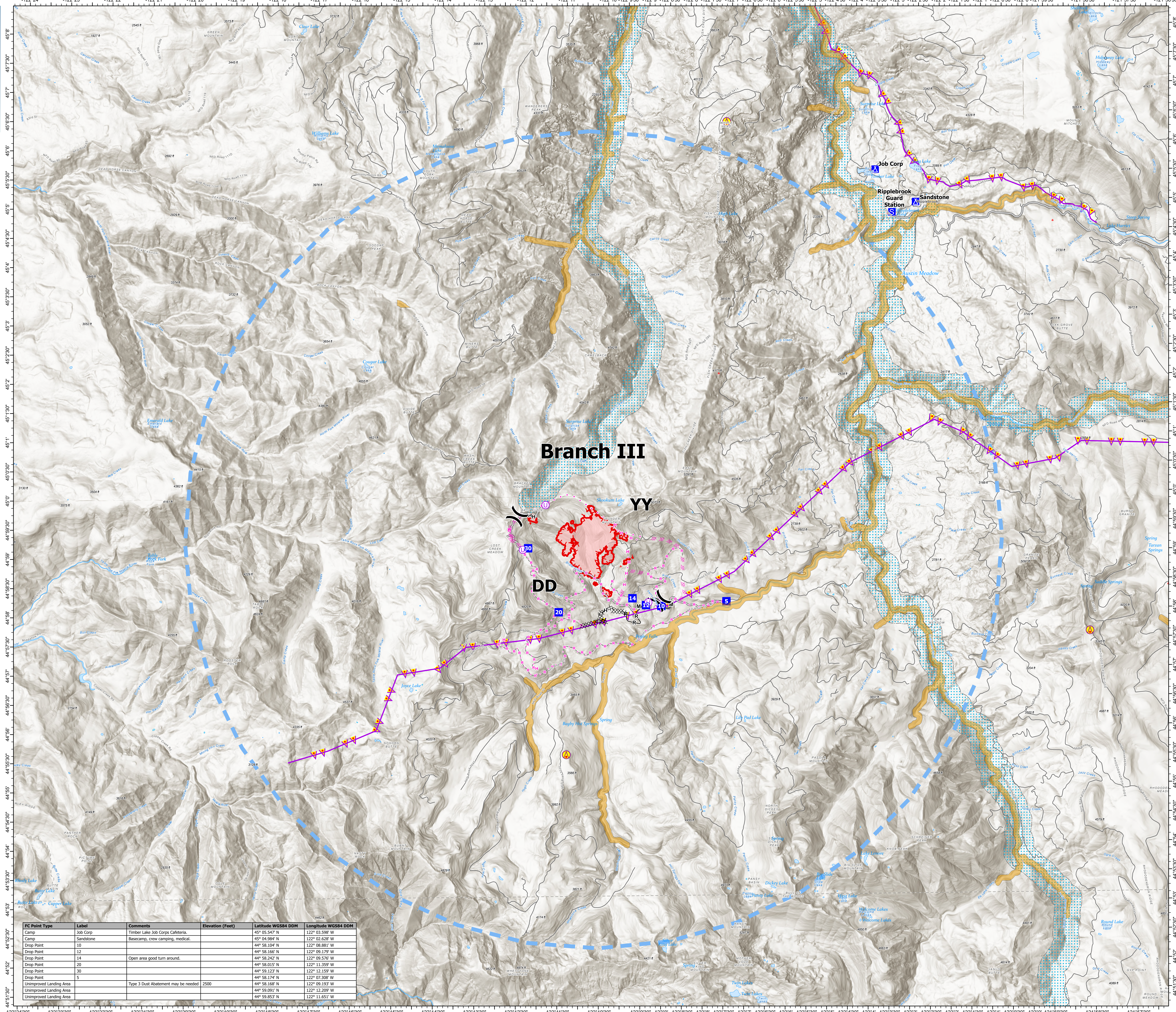


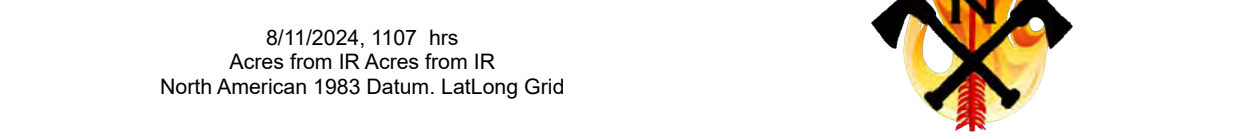
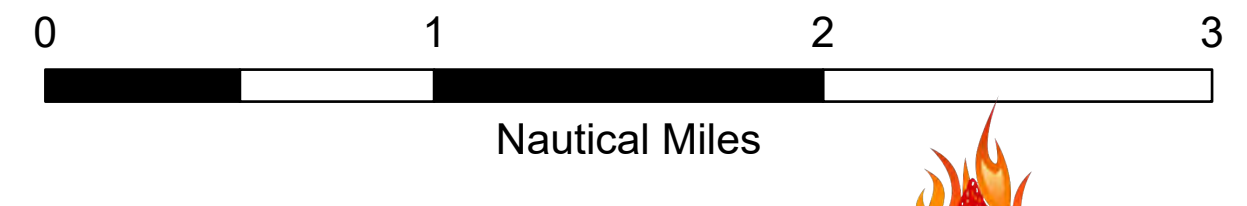
Air Operations
 Sandstone
 OR-MHF-000818
 08/12/2024 Day
 Sandstone 602 acres
 Blister Creek 10 acres
 From IR 20240810 @ 1959 PDT Hrs



- Aerial Hazard
- Unimproved Landing Area
- Division Break
- Drop Point
- Camp
- Staging Area
- Completed Dozer Line
- Completed Hand Line
- Completed Mixed Construction Line
- Completed Road as Line
- Planned Dozer Line
- Planned Hand Line
- Planned Road as Line
- Proposed Line
- Access Route
- Aerial Hazard
- Temporary Flight Restriction
- Uncontained
- Wildfire Daily Fire Perimeter
- Fire Retardant Avoidance
- Roads
- Wild and Scenic River



FC Point Type	Label	Comments	Elevation (Feet)	Latitude WGS84 DDM	Longitude WGS84 DDM
Camp	Job Corp	Timber Lake Job Corps Cafeteria.	45° 05.547' N	122° 03.596' W	
Camp	Sandstone	Basecamp, crew camping, medical.	45° 04.984' N	122° 02.628' W	
Drop Point	10		44° 58.104' N	122° 08.881' W	
Drop Point	12		44° 58.166' N	122° 09.179' W	
Drop Point	14	Open area good turn around.	44° 58.242' N	122° 09.376' W	
Drop Point	20		44° 58.015' N	122° 11.359' W	
Drop Point	30		44° 59.123' N	122° 12.159' W	
Drop Point	5		44° 58.174' N	122° 07.308' W	
Unimproved Landing Area		Type 3 Dust Abatement may be needed	2500	44° 58.168' N	122° 09.193' W
Unimproved Landing Area				44° 59.091' N	122° 12.209' W
Unimproved Landing Area				44° 59.853' N	122° 11.651' W



8/12/2024 1107 hrs
 Acres from IR Acres from IR
 North American 1983 Datum, UTM Grid