

Air Ops

Cougar Creek

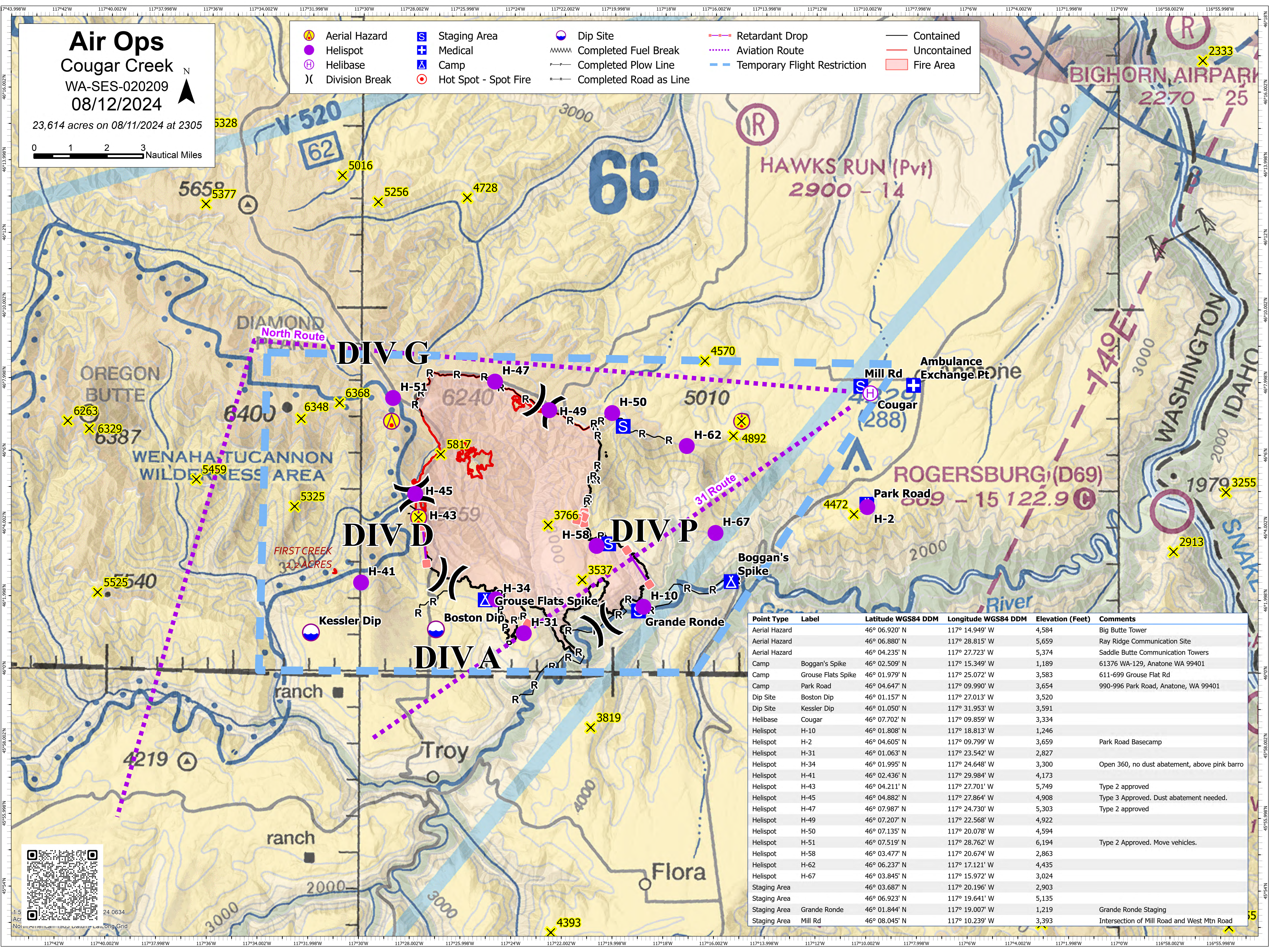
WA-SES-020209

08/12/2024

23,614 acres on 08/11/2024 at 2305

0 1 2 3 Nautical Miles

- Aerial Hazard
- Helispot
- Helibase
- Division Break
- Staging Area
- Medical
- Camp
- Hot Spot - Spot Fire
- Dip Site
- Completed Fuel Break
- Completed Plow Line
- Completed Road as Line
- Retardant Drop
- Aviation Route
- Temporary Flight Restriction
- Contained
- Uncontained
- Fire Area



Point Type	Label	Latitude WGS84 DDM	Longitude WGS84 DDM	Elevation (Feet)	Comments
Aerial Hazard		46° 06.920' N	117° 14.949' W	4,584	Big Butte Tower
Aerial Hazard		46° 06.880' N	117° 28.815' W	5,659	Ray Ridge Communication Site
Aerial Hazard		46° 04.235' N	117° 27.723' W	5,374	Saddle Butte Communication Towers
Camp	Boggan's Spike	46° 02.509' N	117° 15.349' W	1,189	61376 WA-129, Anatone WA 99401
Camp	Grouse Flats Spike	46° 01.979' N	117° 25.072' W	3,583	611-699 Grouse Flat Rd
Camp	Park Road	46° 04.647' N	117° 09.990' W	3,654	990-996 Park Road, Anatone, WA 99401
Dip Site	Boston Dip	46° 01.157' N	117° 27.013' W	3,520	
Dip Site	Kessler Dip	46° 01.050' N	117° 31.953' W	3,591	
Helibase	Cougar	46° 07.702' N	117° 09.859' W	3,334	
Helispot	H-10	46° 01.808' N	117° 18.813' W	1,246	
Helispot	H-2	46° 04.605' N	117° 09.799' W	3,659	Park Road Basecamp
Helispot	H-31	46° 01.063' N	117° 23.542' W	2,827	
Helispot	H-34	46° 01.995' N	117° 24.648' W	3,300	Open 360, no dust abatement, above pink barro
Helispot	H-41	46° 02.436' N	117° 29.984' W	4,173	
Helispot	H-43	46° 04.211' N	117° 27.701' W	5,749	Type 2 approved
Helispot	H-45	46° 04.882' N	117° 27.864' W	4,908	Type 3 Approved. Dust abatement needed.
Helispot	H-47	46° 07.987' N	117° 24.730' W	5,303	Type 2 approved
Helispot	H-49	46° 07.207' N	117° 22.568' W	4,922	
Helispot	H-50	46° 07.135' N	117° 20.078' W	4,594	
Helispot	H-51	46° 07.519' N	117° 28.762' W	6,194	Type 2 Approved. Move vehicles.
Helispot	H-58	46° 03.477' N	117° 20.674' W	2,863	
Helispot	H-62	46° 06.237' N	117° 17.121' W	4,435	
Helispot	H-67	46° 03.845' N	117° 15.972' W	3,024	
Staging Area		46° 03.687' N	117° 20.196' W	2,903	
Staging Area		46° 06.923' N	117° 19.641' W	5,135	
Staging Area	Grande Ronde	46° 01.844' N	117° 19.007' W	1,219	Grande Ronde Staging
Staging Area	Mill Rd	46° 08.045' N	117° 10.239' W	3,393	Intersection of Mill Road and West Mtn Road

