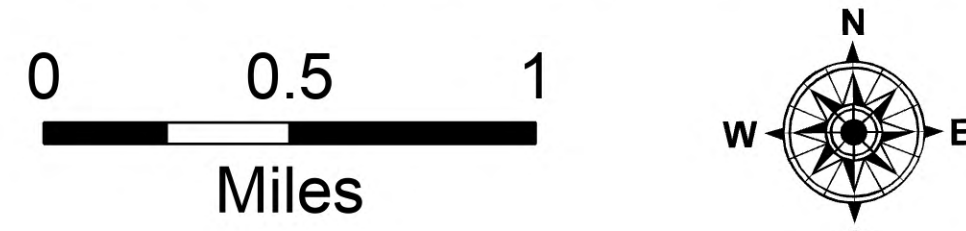


116°14.5'W 116°14'W 116°13.5'W 116°13'W 116°12.5'W 116°12'W 116°11.5'W 116°11'W 116°10.5'W 116°10'W 116°9.5'W 116°9'W 116°8.5'W 116°8'W 116°7.5'W 116°7'W 116°6.5'W 116°6'W 116°5.5'W 116°5'W 116°4.5'W 116°4'W 116°3.5'W 116°3'W 116°2.5'W 116°2'W 116°1.5'W 116°1'W 116°0.5'W 116°W 115°59.5'W 115°59'W

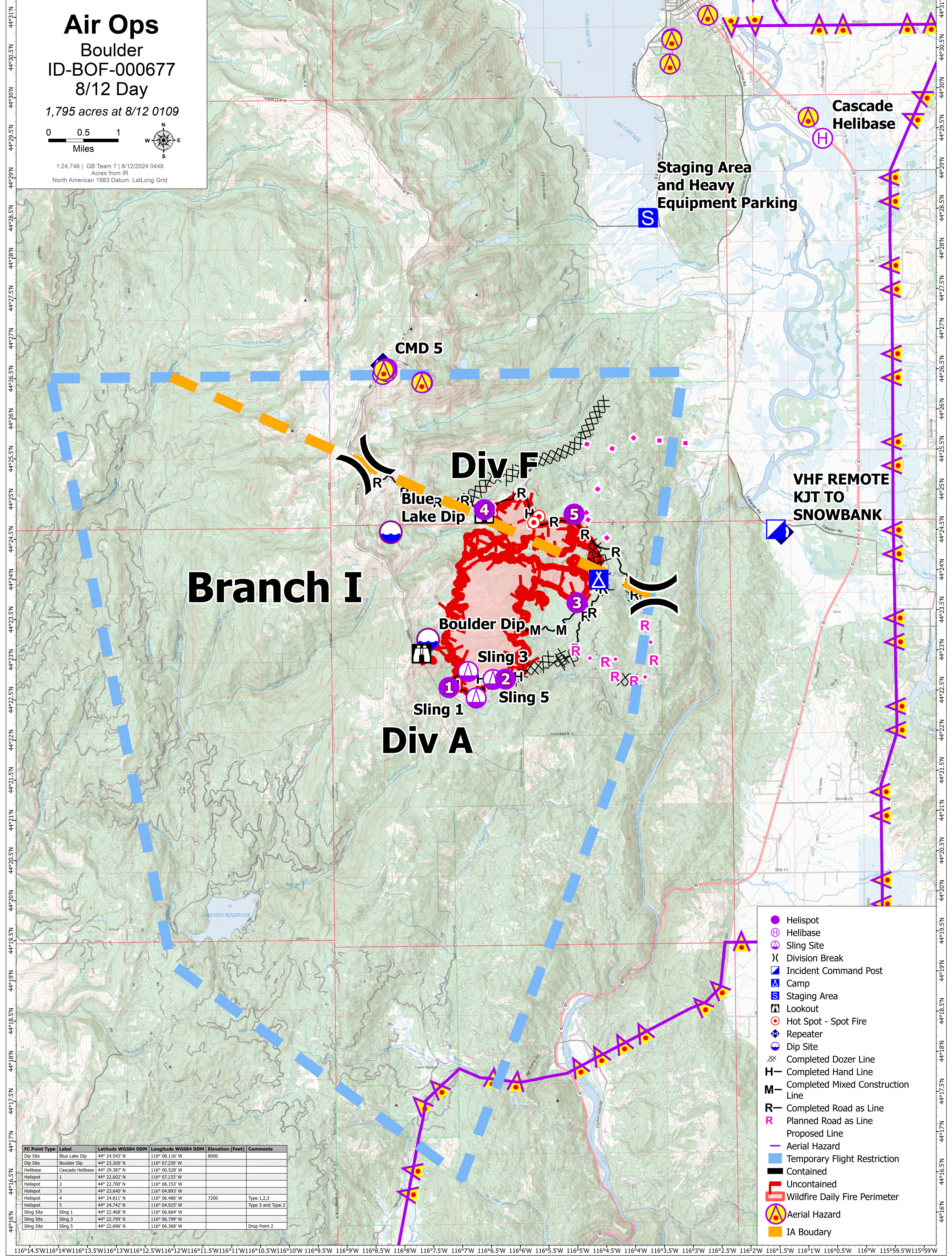
Air Ops

Boulder
ID-BOF-000677
8/12 Day

1,795 acres at 8/12 0109



1:24,746 | GB Team 7 | 8/12/2024 0448
Acres from IR
North American 1983 Datum, Lat/Long Grid



Branch I

Div F

Div A

Boulder Dip

Sling 1

Sling 3

Sling 5

Blue Lake Dip

CMD 5

Cascade Helibase

Staging Area and Heavy Equipment Parking

VHF REMOTE KJT TO SNOWBANK

FC Point Type	Label	Latitude WGS84 DDM	Longitude WGS84 DDM	Elevation (Feet)	Comments
Dip Site	Blue Lake Dip	44° 24.543' N	116° 08.116' W	8000	
Dip Site	Boulder Dip	44° 23.200' N	116° 07.230' W		
Helibase	Cascade Helibase	44° 29.387' N	116° 00.528' W		
Helispot	1	44° 22.602' N	116° 07.133' W		
Helispot	2	44° 22.700' N	116° 06.153' W		
Helispot	3	44° 23.640' N	116° 04.893' W		
Helispot	4	44° 24.811' N	116° 06.486' W	7200	Type 1,2,3
Helispot	5	44° 24.742' N	116° 04.925' W		Type 3 and Type 2
Sling Site	Sling 1	44° 22.468' N	116° 06.664' W		
Sling Site	Sling 3	44° 22.799' N	116° 06.799' W		
Sling Site	Sling 5	44° 22.696' N	116° 06.368' W		Drop Point 2

- Helispot
- ⊕ Helibase
- ⚠ Sling Site
- ⌘ Division Break
- Ⓜ Incident Command Post
- Ⓜ Camp
- Ⓜ Staging Area
- 🏠 Lookout
- 🔥 Hot Spot - Spot Fire
- 📡 Repeater
- 📡 Dip Site
- ⌘ Completed Dozer Line
- ⌘ Completed Hand Line
- ⌘ Completed Mixed Construction Line
- ⌘ Completed Road as Line
- ⌘ Planned Road as Line
- ⌘ Proposed Line
- ⌘ Aerial Hazard
- ⌘ Temporary Flight Restriction
- ⌘ Contained
- ⌘ Uncontained
- ⌘ Wildfire Daily Fire Perimeter
- ⌘ Aerial Hazard
- ⌘ IA Boundary

116°14.5'W 116°14'W 116°13.5'W 116°13'W 116°12.5'W 116°12'W 116°11.5'W 116°11'W 116°10.5'W 116°10'W 116°9.5'W 116°9'W 116°8.5'W 116°8'W 116°7.5'W 116°7'W 116°6.5'W 116°6'W 116°5.5'W 116°5'W 116°4.5'W 116°4'W 116°3.5'W 116°3'W 116°2.5'W 116°2'W 116°1.5'W 116°1'W 116°0.5'W 116°W 115°59.5'W 115°59'W