

AIR OPERATIONS

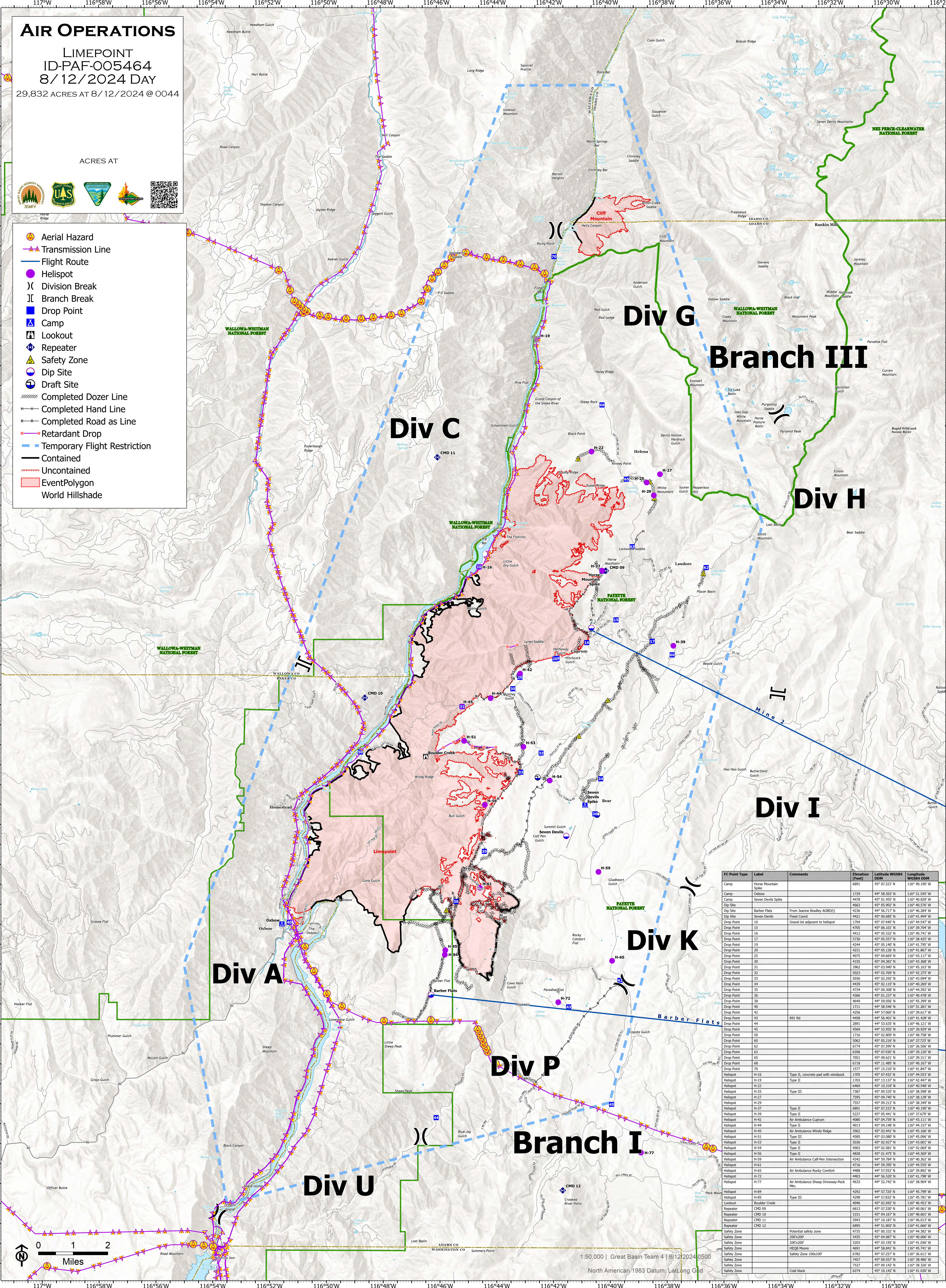
LIMEPOINT
ID-PAF-005464
8/12/2024 DAY

29,832 ACRES AT 8/12/2024 @ 0044

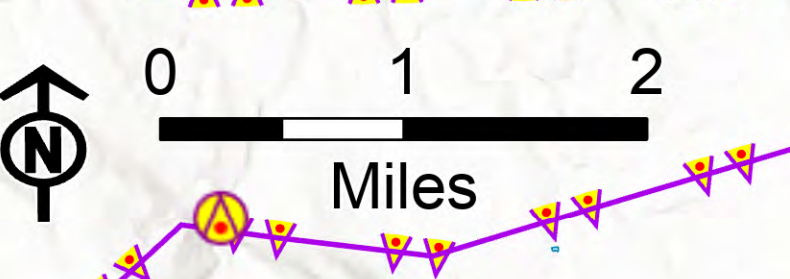
ACRES AT



- Aerial Hazard
- Transmission Line
- Flight Route
- Helispot
- Division Break
- Branch Break
- Drop Point
- Camp
- Lookout
- Repeater
- Safety Zone
- Dip Site
- Draft Site
- Completed Dozer Line
- Completed Hand Line
- Completed Road as Line
- Retardant Drop
- Temporary Flight Restriction
- Contained
- Uncontained
- EventPolygon
- World Hillshade



FC Point Type	Label	Comments	Elevation (feet)	Latitude WGS84 DDM	Longitude WGS84 DDM
Camp	Horse Mountain Spike		6891	45° 02' 333" N	116° 40' 190" W
Camp	Oxbow		1729	44° 58' 503" N	116° 51' 545" W
Camp	Seven Devils Spike		4478	45° 01' 455" N	116° 40' 538" W
Dip Site	Barber Flats	From Jeanne Bradley AOB(D)	4663	45° 05' 902" N	116° 40' 576" W
Dip Site	Seven Devils	Fixed Coord	4236	44° 56' 717" N	116° 46' 284" W
Dip Site	Seven Devils	Fixed Coord	4421	45° 00' 685" N	116° 41' 494" W
Drop Point	10		1704	45° 07' 440" N	116° 44' 547" W
Drop Point	15	Gravel lot adjacent to helispot	4705	45° 06' 101" N	116° 39' 294" W
Drop Point	16		4412	45° 05' 532" N	116° 40' 741" W
Drop Point	17		5730	45° 05' 557" N	116° 38' 425" W
Drop Point	19		4244	45° 05' 140" N	116° 41' 795" W
Drop Point	20		4251	45° 05' 126" N	116° 41' 867" W
Drop Point	25		4075	45° 04' 669" N	116° 43' 117" W
Drop Point	30		4155	45° 04' 382" N	116° 43' 368" W
Drop Point	31		3962	45° 03' 940" N	116° 45' 163" W
Drop Point	32		5023	45° 02' 769" N	116° 42' 235" W
Drop Point	33		5036	45° 02' 292" N	116° 43' 094" W
Drop Point	34		4439	45° 02' 119" N	116° 40' 289" W
Drop Point	35		4734	45° 00' 308" N	116° 44' 392" W
Drop Point	36		4266	45° 01' 237" N	116° 40' 476" W
Drop Point	38		4649	44° 58' 026" N	116° 45' 287" W
Drop Point	40		1711	44° 58' 546" N	116° 51' 281" W
Drop Point	42		4256	44° 57' 060" N	116° 39' 617" W
Drop Point	43	891 Rd	4458	44° 56' 401" N	116° 41' 438" W
Drop Point	44		2894	44° 53' 635" N	116° 46' 121" W
Drop Point	45		4569	44° 53' 955" N	116° 39' 820" W
Drop Point	50		1716	45° 02' 809" N	116° 48' 758" W
Drop Point	60		5062	45° 05' 216" N	116° 37' 223" W
Drop Point	62		6374	45° 07' 399" N	116° 36' 506" W
Drop Point	63		6296	45° 07' 030" N	116° 39' 320" W
Drop Point	65		7051	45° 09' 621" N	116° 39' 311" W
Drop Point	68		6718	45° 11' 485" N	116° 40' 167" W
Drop Point	70		1577	45° 15' 210" N	116° 41' 847" W
Helispot	H-15	Type II, concrete pad with windsock	1705	45° 07' 432" N	116° 44' 533" W
Helispot	H-19	Type II	1703	45° 13' 137" N	116° 42' 447" W
Helispot	H-22	Type II	6469	45° 10' 318" N	116° 40' 548" W
Helispot	H-25	Type III	7387	45° 09' 535" N	116° 38' 598" W
Helispot	H-27	Type II	7395	45° 09' 740" N	116° 38' 288" W
Helispot	H-29	Type II	7257	45° 09' 212" N	116° 38' 340" W
Helispot	H-37	Type II	6891	45° 07' 333" N	116° 40' 190" W
Helispot	H-39	Type II	5227	45° 05' 441" N	116° 37' 679" W
Helispot	H-42	Air Ambulance Cuprum	4080	45° 04' 739" N	116° 43' 111" W
Helispot	H-44	Type II	4943	45° 04' 146" N	116° 44' 517" W
Helispot	H-45	Air Ambulance Windy Ridge	3962	45° 03' 941" N	116° 45' 166" W
Helispot	H-51	Type III	4585	45° 03' 080" N	116° 45' 096" W
Helispot	H-53	Type II	5036	45° 02' 927" N	116° 43' 001" W
Helispot	H-54	Type II	4903	45° 02' 081" N	116° 43' 269" W
Helispot	H-56	Type II	4828	45° 01' 475" N	116° 44' 369" W
Helispot	H-59	Air Ambulance Call-Pen Intersection	4342	44° 59' 784" N	116° 40' 362" W
Helispot	H-61	Air Ambulance Rocky Comfort	4488	44° 59' 395" N	116° 40' 555" W
Helispot	H-65	Air Ambulance Sheep Driveway-Pack Mtn.	4633	44° 57' 742" N	116° 38' 904" W
Helispot	H-84	Type III	4292	44° 57' 220" N	116° 45' 799" W
Helispot	H-85	Type III	4298	44° 57' 832" N	116° 45' 781" W
Lookout	Boulder Creek		4046	45° 02' 692" N	116° 46' 453" W
Repeater	CMD 09		6813	45° 07' 330" N	116° 40' 061" W
Repeater	CMD 10		3351	45° 04' 167" N	116° 46' 601" W
Repeater	CMD 11		3943	45° 10' 187" N	116° 46' 513" W
Repeater	CMD 12		6895	44° 51' 803" N	116° 41' 666" W
Safety Zone	Potential safety zone		4735	45° 00' 332" N	116° 44' 382" W
Safety Zone	200x200'		5435	45° 04' 087" N	116° 40' 000" W
Safety Zone	HEQB Moore		5203	45° 02' 192" N	116° 41' 236" W
Safety Zone	Safety Zone 100x100'		4691	44° 58' 841" N	116° 45' 741" W
Safety Zone	Safety Zone		6782	45° 07' 257" N	116° 36' 611" W
Safety Zone	Safety Zone		7457	45° 09' 557" N	116° 38' 486" W
Safety Zone	Safety Zone		7827	45° 09' 142" N	116° 39' 266" W
Safety Zone	Safety Zone		6274	45° 10' 142" N	116° 41' 030" W



1:50,000 | Great Basin Team 4 | 8/12/2024 0500
North American 1983 Datum, Lat Long Grid