

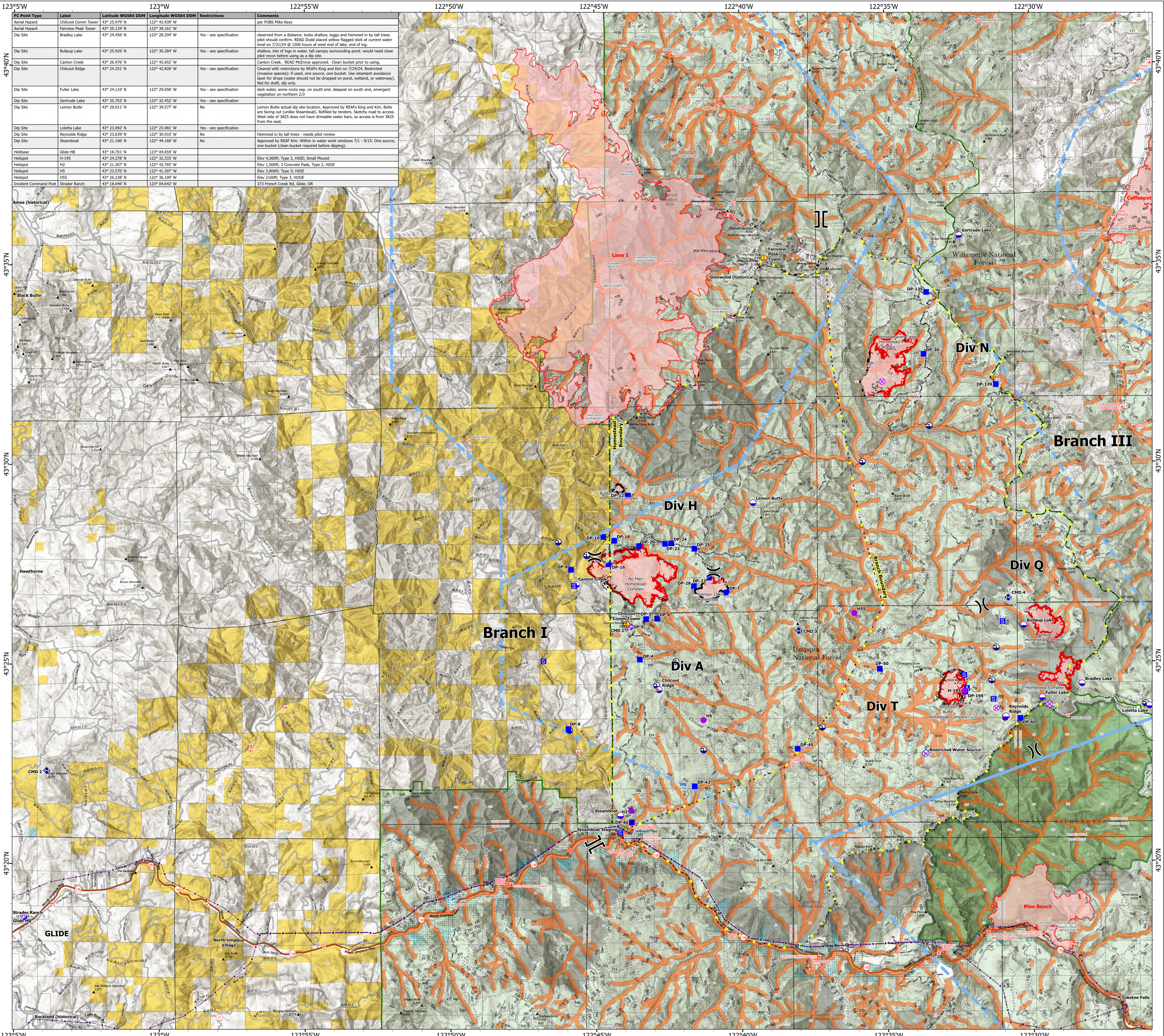
# Airops

Homestead Complex  
OR-UPF-240311  
8/12/2024

3851 acres at 08/10/2024 2110 PDT

- Aerial Hazard
- Helispot
- Helibase
- UAS Launch and Recovery
- ⋈ Division Break
- ⋈ Branch Break
- Incident Command Post
- Drop Point
- Camp
- Staging Area
- Other
- ◆ Repeater
- Dip Site
- Draft Site
- Restricted Water Source
- Completed Burnout
- Completed Dozer Line
- Completed Hand Line
- Completed Mixed Construction Line
- Completed Road as Line
- Access Route
- Highlighted Feature
- Other
- Temporary Flight Restriction
- Contained
- Uncontained
- Retardant Avoidance Areas
- Electric Power Transmission Lines
- USFS Roadless Areas
- Forest Service Land
- Bureau of Land Management Lands
- State Lands

FC Point Type	Label	Latitude WGS84 DDM	Longitude WGS84 DDM	Restrictions	Comments
Aerial Hazard	Chicoot Comm Tower	43° 25.979' N	122° 43.939' W		per F085 Mike Keys
Aerial Hazard	Fairview Peak Tower	43° 35.134' N	122° 39.161' W		
Dip Site	Bradley Lake	43° 24.456' N	122° 28.294' W	Yes - see specification	observed from a distance, looks shallow, loggy and hemmed in by tall trees, pilot should confirm. READ Dood placed yellow flagged stick at current water level on 7/31/24 @ 1500 hours at west end of lake, end of log.
Dip Site	Bullpup Lake	43° 25.932' N	122° 30.284' W	Yes - see specification	shallow, lots of logs in water, tall canopy surrounding pond, would need close pilot recon before using as a dip site.
Dip Site	Canton Creek	43° 26.976' N	122° 45.652' W		Canton Creek. READ McEnroe approved. Clean bucket prior to using.
Dip Site	Chicoot Ridge	43° 24.331' N	122° 42.828' W	Yes - see specification	Cleared with restrictions by REAFs King and Kim on 7/24/24. Restricted (invasive species); if used, one source, one bucket. Use retardant avoidance layer for drops (water should not be dropped on pond, wetland, or waterway). Not for draft, dip only.
Dip Site	Fuller Lake	43° 24.110' N	122° 29.656' W	Yes - see specification	dark water, some rocks esp. on south end, deepest on south end, emergent vegetation on northern 2/3
Dip Site	Gertrude Lake	43° 35.703' N	122° 32.452' W	No - see specification	
Dip Site	Lemon Butte	43° 29.011' N	122° 39.577' W	No	Lemon Butte actual dip site location. Approved by REAFs King and Kim. Bolts are facing out (unlike Steamboat). Refilled by tenders. Sketchy road to access. West side of 3825 does not have drivable water bars, so access is from 3825 from the east.
Dip Site	Loletta Lake	43° 23.892' N	122° 25.981' W	Yes - see specification	
Dip Site	Reynolds Ridge	43° 23.639' N	122° 30.910' W	No	Hemmed in by tall trees - needs pilot review
Dip Site	Steamboat	43° 21.186' N	122° 44.168' W	No	Approved by REAF Kim. Within in water work windows 7/1 - 9/15. One source, one bucket (clean bucket required before dipping).
Helibase	Glide HB	43° 18.701' N	123° 04.659' W		
Helispot	H-195	43° 24.278' N	122° 32.333' W		Elev 4,360ft; Type 3; HIGE; Small Mound
Helispot	H12	43° 21.307' N	122° 42.795' W		Elev 1,500ft; 3 Concrete Pads; Type 2; HIGE
Helispot	H15	43° 23.570' N	122° 41.307' W		Elev 3,806ft; Type 3; HIGE
Helispot	H55	43° 26.238' N	122° 36.109' W		Elev 2160ft; Type 3; HIGE
Incident Command Post	Strader Ranch	43° 18.646' N	123° 04.642' W		373 French Creek Rd, Glide, OR



0 1 2 4 Miles  
0 2 4 8 Kilometers

1:55,000 | NW 8 | 8/11/2024 2114  
IR Flight  
North American 1983 Datum, LatLong Grid