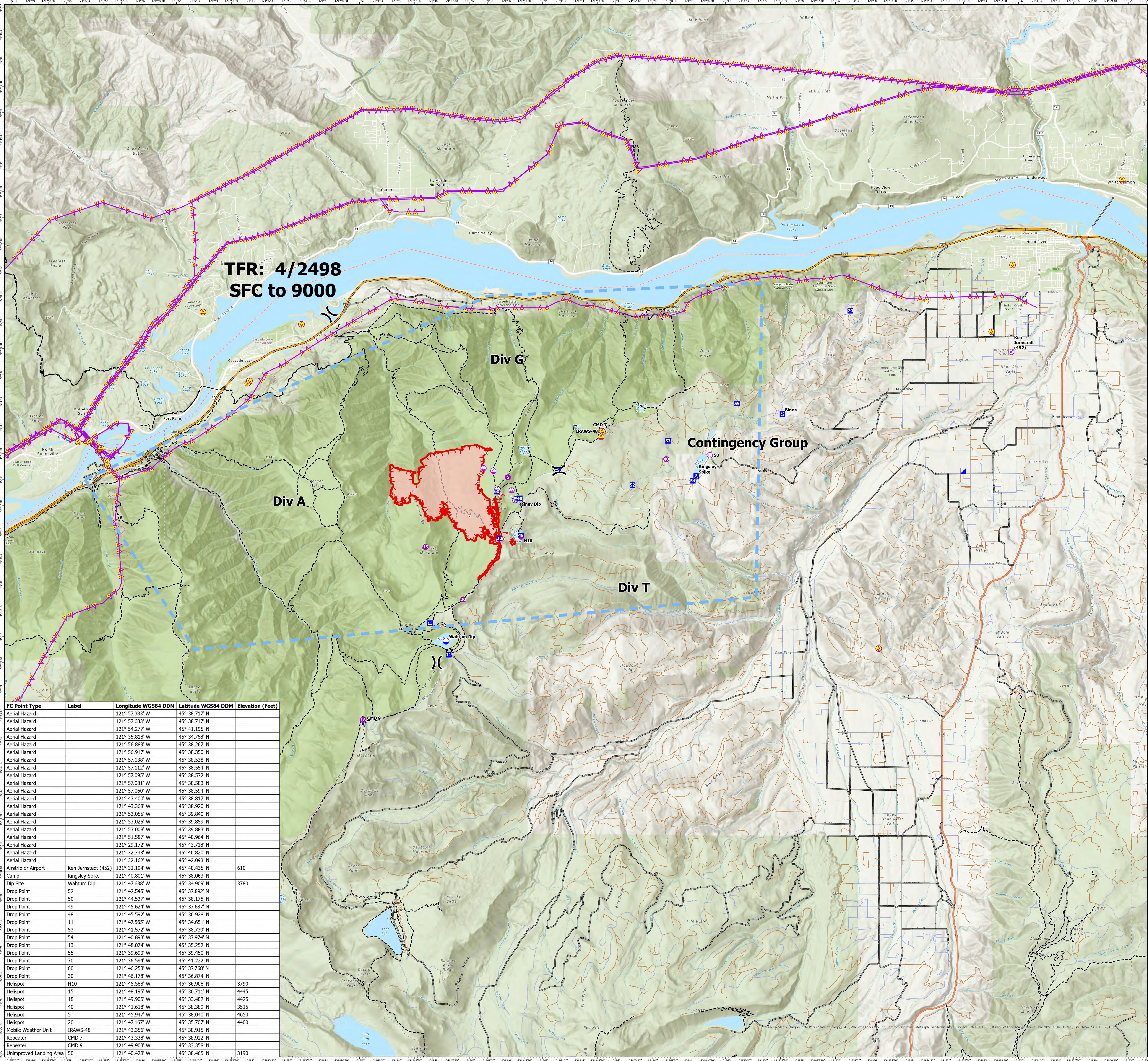




# Air Operations

Whisky Creek  
 OR-MHF-000639  
 08/13/2024 Day  
 Whisky Creek acres  
 at 20240812 @ 0220 PDT

- Label Point
- Aerial Hazard
- Airstrip or Airport
- Helispot
- Sling Site
- Unimproved Landing Area
- Division Break
- Incident Command Post
- Drop Point
- Camp
- Staging Area
- Hot Spot - Spot Fire
- Mobile Weather Unit
- Repeater
- Dip Site
- Restricted Water Source
- Aerial Hazard
- Temporary Flight Restriction
- Uncontained
- Wildfire Daily Fire Perimeter
- Interstate
- Federal or State highway
- Paved
- All weather
- Dirt
- Trails\_Plus\_GTAC

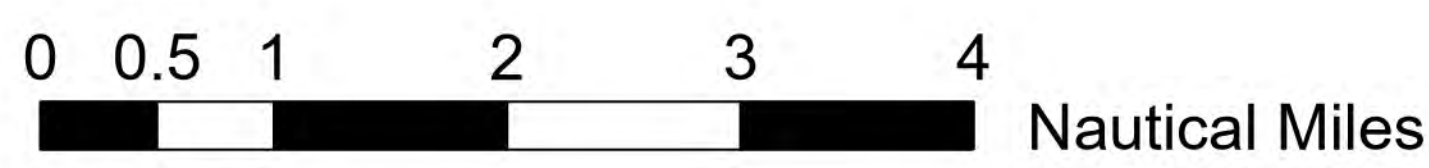


**TFR: 4/2498  
 SFC to 9000**

## Incident Frequencies

Name	AM	FM	RX	TX
A/A Primary	TFR-AM	123.6500	123.6500	123.6500
A/A (Rotor)	AM	118.7750	118.7750	118.7750
A/G Primary	FM	164.9500	164.9500	164.9500
A/G Secondary	FM	167.0750	167.0750	167.0750

FC Point Type	Label	Longitude WGS84 DDM	Latitude WGS84 DDM	Elevation (Feet)
Aerial Hazard		121° 57.383' W	45° 38.717' N	
Aerial Hazard		121° 57.683' W	45° 38.717' N	
Aerial Hazard		121° 54.277' W	45° 41.195' N	
Aerial Hazard		121° 35.818' W	45° 34.768' N	
Aerial Hazard		121° 56.883' W	45° 38.267' N	
Aerial Hazard		121° 56.917' W	45° 38.350' N	
Aerial Hazard		121° 57.138' W	45° 38.538' N	
Aerial Hazard		121° 57.112' W	45° 38.554' N	
Aerial Hazard		121° 57.095' W	45° 38.572' N	
Aerial Hazard		121° 57.081' W	45° 38.583' N	
Aerial Hazard		121° 57.060' W	45° 38.594' N	
Aerial Hazard		121° 43.400' W	45° 38.817' N	
Aerial Hazard		121° 43.368' W	45° 38.920' N	
Aerial Hazard		121° 53.055' W	45° 39.840' N	
Aerial Hazard		121° 53.025' W	45° 39.859' N	
Aerial Hazard		121° 53.008' W	45° 39.883' N	
Aerial Hazard		121° 51.587' W	45° 40.964' N	
Aerial Hazard		121° 29.172' W	45° 43.718' N	
Aerial Hazard		121° 32.733' W	45° 40.820' N	
Aerial Hazard		121° 32.162' W	45° 42.093' N	
Airstrip or Airport	Ken Jernstedt (452)	121° 32.194' W	45° 40.435' N	610
Camp	Kingsley Spike	121° 40.801' W	45° 38.063' N	
Dip Site	Wahtum Dip	121° 47.638' W	45° 34.909' N	3780
Drop Point	52	121° 42.545' W	45° 37.892' N	
Drop Point	50	121° 44.537' W	45° 38.175' N	
Drop Point	49	121° 45.624' W	45° 37.637' N	
Drop Point	48	121° 45.592' W	45° 36.928' N	
Drop Point	11	121° 47.565' W	45° 34.651' N	
Drop Point	53	121° 41.572' W	45° 38.739' N	
Drop Point	54	121° 40.893' W	45° 37.974' N	
Drop Point	13	121° 48.074' W	45° 35.252' N	
Drop Point	55	121° 39.690' W	45° 39.450' N	
Drop Point	70	121° 36.594' W	45° 41.222' N	
Drop Point	60	121° 46.253' W	45° 37.768' N	
Drop Point	30	121° 46.178' W	45° 36.874' N	
Helispot	H10	121° 45.588' W	45° 36.874' N	3790
Helispot	15	121° 48.195' W	45° 36.908' N	4445
Helispot	18	121° 49.905' W	45° 33.402' N	4425
Helispot	40	121° 41.618' W	45° 38.389' N	3515
Helispot	5	121° 45.947' W	45° 38.040' N	4650
Helispot	20	121° 47.167' W	45° 35.707' N	4400
Mobile Weather Unit	IRAWS-48	121° 43.356' W	45° 38.915' N	
Repeater	CMD 7	121° 43.338' W	45° 38.922' N	
Repeater	CMD 9	121° 49.903' W	45° 33.358' N	
Unimproved Landing Area	50	121° 40.428' W	45° 38.465' N	3190



8/12/2024, 2110 hrs  
 Acres from IR  
 WGS 1984 Datum. LatLong Grid