



# Air Operations

Blister Creek

OR-MHF-000808

16 acres

Sandstone

OR-MHF-000818

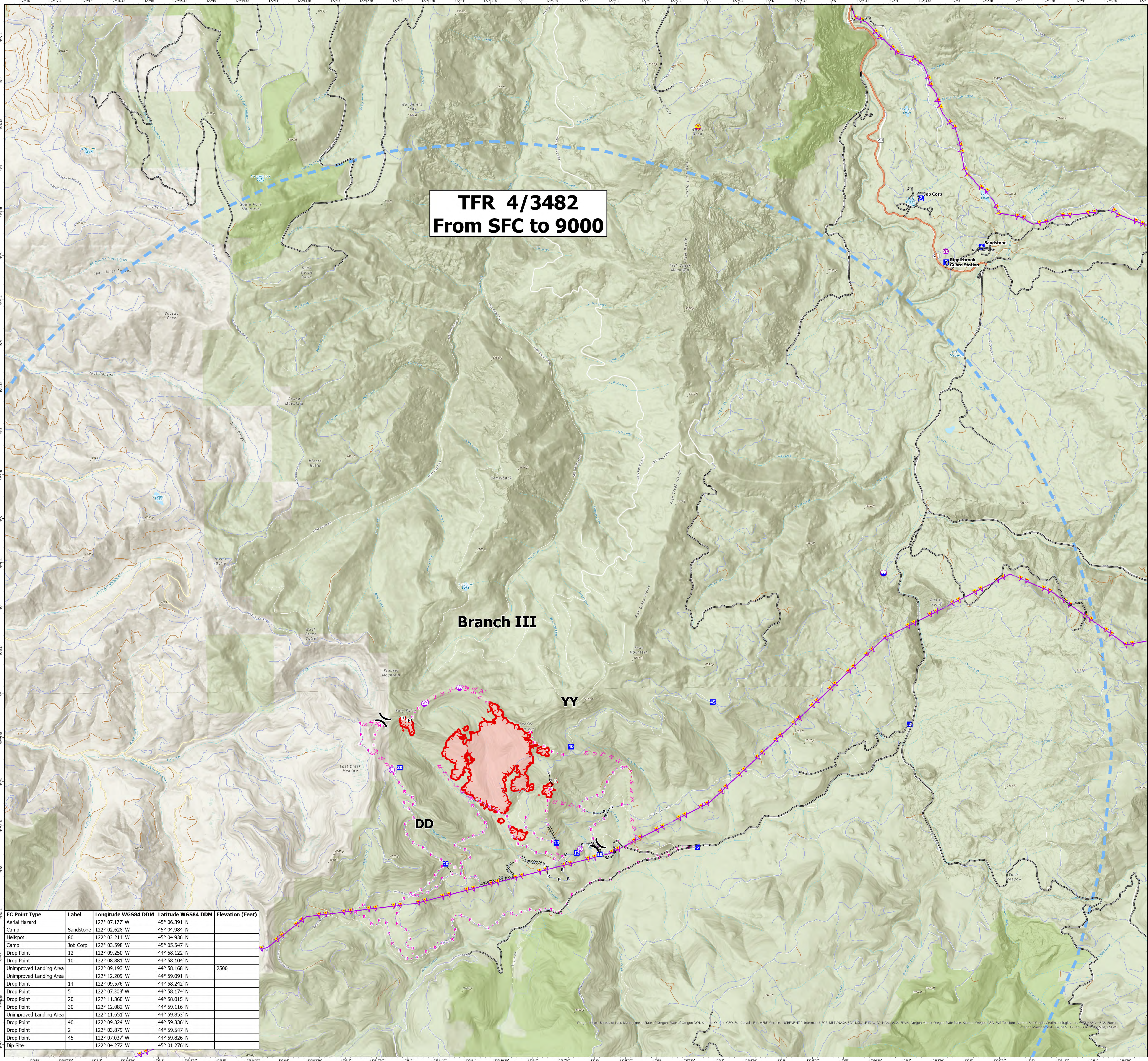
16 acres

08/13/2024 Day

Acres last updated

at Aug 12, 2024 @ 0210 PDT

- Aerial Hazard
- Helispot
- Sling Site
- Unimproved Landing Area
- Division Break
- Drop Point
- Camp
- Staging Area
- Dip Site
- Completed Dozer Line
- Completed Hand Line
- Completed Mixed Construction Line
- Completed Road as Line
- Planned Dozer Line
- Planned Hand Line
- Planned Road as Line
- Aerial Hazard
- Temporary Flight Restriction
- Uncontained
- Wildfire Daily Fire Perimeter
- Mainline Rd
- Federal or State highway
- Paved
- All weather
- Dirt



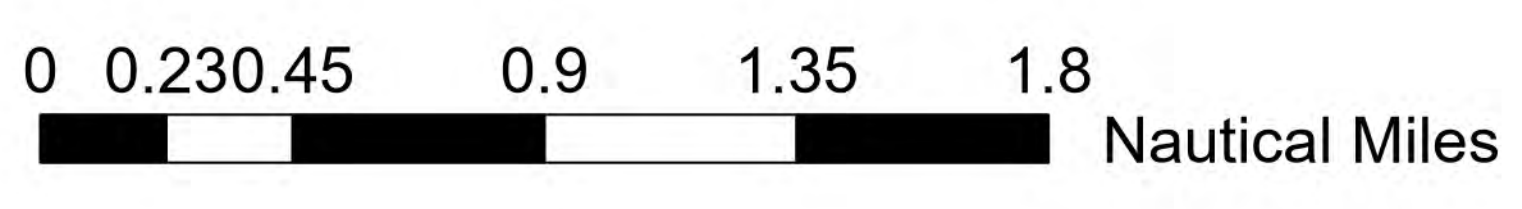
**TFR 4/3482**  
**From SFC to 9000**

**Branch III**

**DD**

**YY**

FC Point Type	Label	Longitude WGS84 DDM	Latitude WGS84 DDM	Elevation (Feet)
Aerial Hazard		122° 07.177' W	45° 06.391' N	
Camp	Sandstone	122° 02.628' W	45° 04.984' N	
Helispot	80	122° 03.211' W	45° 04.936' N	
Camp	Job Corp	122° 03.598' W	45° 05.547' N	
Drop Point	12	122° 09.250' W	44° 58.122' N	
Drop Point	10	122° 08.881' W	44° 58.104' N	
Unimproved Landing Area		122° 09.193' W	44° 58.168' N	2500
Unimproved Landing Area		122° 12.209' W	44° 59.091' N	
Drop Point	14	122° 09.576' W	44° 58.242' N	
Drop Point	5	122° 07.308' W	44° 58.174' N	
Drop Point	20	122° 11.360' W	44° 58.015' N	
Drop Point	30	122° 12.082' W	44° 59.116' N	
Unimproved Landing Area		122° 11.651' W	44° 59.853' N	
Drop Point	40	122° 09.324' W	44° 59.336' N	
Drop Point	2	122° 03.879' W	44° 59.547' N	
Drop Point	45	122° 07.037' W	44° 59.826' N	
Dip Site		122° 04.272' W	45° 01.276' N	



8/12/2024, 1819 hrs  
Acres from IR Acres from IR  
North American 1983 Datum. LatLong Grid