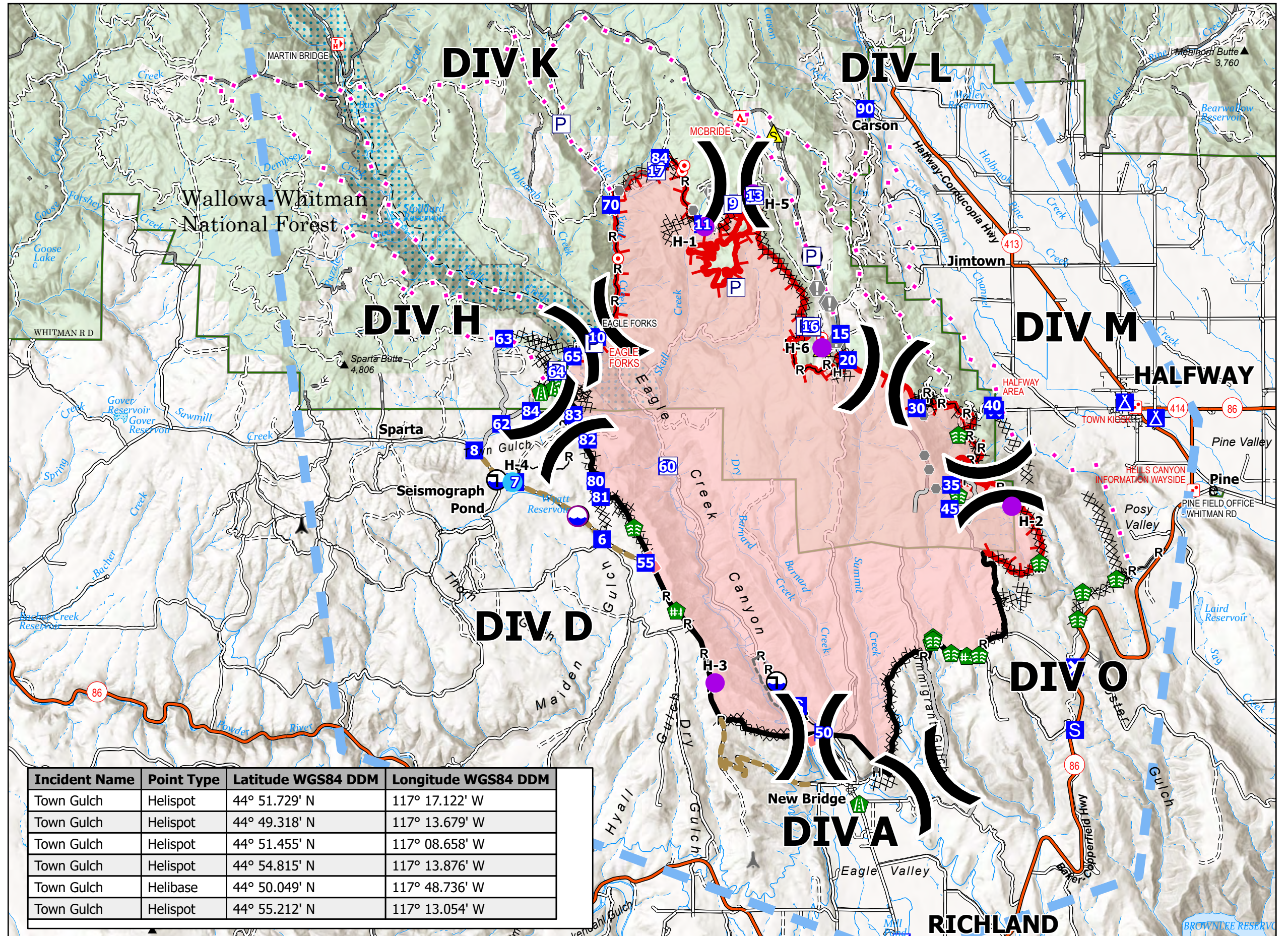


Pilot Town Gulch

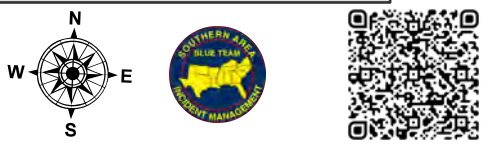
ORWWF-000431
08/13/2024 Day
18,170 acres at 20240812 1932hrs

Legend

- Air Operations**
- Helispot
- Assignment Breaks**
-) (Division Break
- Logistics**
- ▣ Incident Command Post
- ▣ Drop Point
- ▣ Closure
- ▣ Camp
- ▣ Staging Area
- Fire**
- Hot Spot - Spot Fire
- Reference**
- ⬇ Value at Risk
- Other
- Landmark
- ⊕ Gate
- ⊕ Bridge
- Repair**
- ▣ Stream Crossing
- ▣ Road Repair
- ▣ Repair Point
- ▣ Fence - Cut/Damaged
- Safety**
- ⚠ Safety Zone
- Water**
- ⊕ Dip Site
- ⊕ Draft Site
- Ops Completed**
- ⊗ Completed Dozer Line
- H— Completed Hand Line
- M— Completed Mixed Construction Line
- R— Completed Road as Line
- Planning**
- ⋯ Proposed Line
- Reference**
- Access Route
- - - Fence
- - - Other
- Repair**
- ▣ Road Repair
- Air Ops**
- ▣ Retardant Drop
- ▣ Temporary Flight Restriction
- Fire Perimeter**
- ▣ Fire Edge (Field Collection)
- FC Line Type**
- ▣ Contained
- ▣ Uncontained
- Polygon Type**
- ▣ Wildfire Daily Fire Perimeter
- ▲ Tower 30' - 200'
- ▲ Towers of Unknown Height



Incident Name	Point Type	Latitude WGS84 DDM	Longitude WGS84 DDM
Town Gulch	Helispot	44° 51.729' N	117° 17.122' W
Town Gulch	Helispot	44° 49.318' N	117° 13.679' W
Town Gulch	Helispot	44° 51.455' N	117° 08.658' W
Town Gulch	Helispot	44° 54.815' N	117° 13.876' W
Town Gulch	Helibase	44° 50.049' N	117° 48.736' W
Town Gulch	Helispot	44° 55.212' N	117° 13.054' W



1:48,000 | SA Blue Team | 8/12/2024 2027
Acres from IR and GPS
North American 1983 Datum, Lat/Long Grid