



Air Operations

Whisky Creek
 OR-MHF-000639
 08/13/2024 Day
 1,865 acres
 at 20240812 @ 0220 PDT

FC Point Type	Label	Longitude WGS84 DDM	Latitude WGS84 DDM	Elevation (Feet)
Aerial Hazard		121° 54.277' W	45° 41.195' N	
Aerial Hazard		121° 35.818' W	45° 34.768' N	
Aerial Hazard		121° 43.400' W	45° 38.817' N	
Aerial Hazard		121° 43.368' W	45° 38.920' N	
Aerial Hazard		121° 53.055' W	45° 39.840' N	
Aerial Hazard		121° 53.025' W	45° 39.859' N	
Aerial Hazard		121° 53.008' W	45° 39.883' N	
Aerial Hazard		121° 51.587' W	45° 40.964' N	
Aerial Hazard		121° 32.733' W	45° 40.820' N	
Aerial Hazard		121° 32.162' W	45° 42.093' N	
Airstrip or Airport	Ken Jernstedt (452)	121° 32.194' W	45° 40.435' N	610
Camp	Kingsley Spike	121° 40.801' W	45° 38.063' N	
Dip Site	Wahtum Dip	121° 47.638' W	45° 34.909' N	3780
Drop Point	52	121° 42.545' W	45° 37.892' N	
Drop Point	50	121° 44.537' W	45° 38.175' N	
Drop Point	49	121° 45.624' W	45° 37.637' N	
Drop Point	48	121° 45.592' W	45° 36.928' N	
Drop Point	11	121° 47.565' W	45° 34.651' N	
Drop Point	53	121° 41.572' W	45° 38.739' N	
Drop Point	54	121° 40.893' W	45° 37.974' N	
Drop Point	13	121° 48.074' W	45° 35.252' N	
Drop Point	55	121° 39.690' W	45° 39.450' N	
Drop Point	70	121° 36.594' W	45° 41.222' N	
Drop Point	60	121° 46.253' W	45° 37.768' N	
Drop Point	30	121° 46.178' W	45° 36.874' N	
Helispot	H10	121° 45.588' W	45° 36.908' N	3790
Helispot	15	121° 48.195' W	45° 36.711' N	4445
Helispot	18	121° 49.905' W	45° 33.402' N	4425
Helispot	40	121° 41.618' W	45° 38.389' N	3515
Helispot	5	121° 45.947' W	45° 38.040' N	4650
Helispot	20	121° 47.167' W	45° 35.707' N	4400
Mobile Weather Unit	IRAWS-48	121° 43.356' W	45° 38.915' N	
Repeater	CMD 7	121° 43.338' W	45° 38.922' N	
Repeater	CMD 9	121° 49.903' W	45° 33.358' N	
Unimproved Landing Area	50	121° 40.428' W	45° 38.465' N	3190

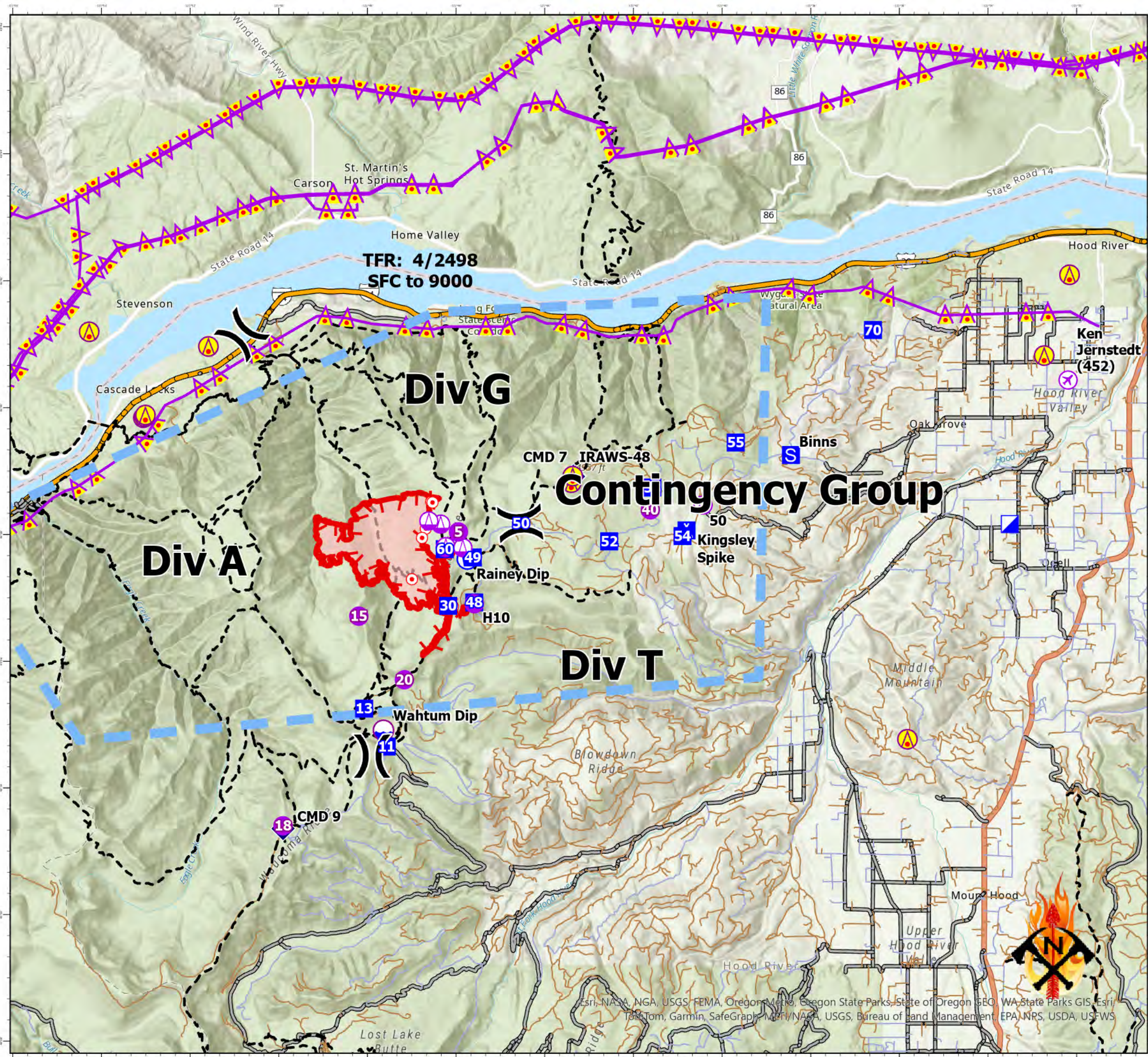
	Aerial Hazard		Drop Point		Restricted Water Source
	Airstrip or Airport		Camp		Aerial Hazard
	Helispot		Staging Area		Temporary Flight Restriction
	Sling Site		Hot Spot - Spot Fire		Uncontained
	Unimproved Landing Area		Wildfire Daily Fire Perimeter		Interstate
	Division Break		Mobile Weather Unit		Federal or State highway
	Incident Command Post		Repeater		Paved
			Dip Site		All weather
					Dirt
					Trails Plus GTAC



Incident Frequencies

Name	AM_FM	RX	TX
A/A Primary	TFR-AM	123.6500	123.6500
A/A (Rotor)	AM	118.7750	118.7750
A/G Primary	FM	164.9500	164.9500
A/G Secondary	FM	167.0750	167.0750

8/12/2024, 2110 hrs
 Acres from IR
 WGS 1984 Datum. LatLong Grid



Esri, NASA, NGA, USGS, FEMA, Oregon Metro, Oregon State Parks, State of Oregon, GEO, WA State Parks GIS, Esri, TomTom, Garmin, SafeGraph, METI/NASA, USGS, Bureau of Land Management, EPA, NPS, USDA, USFWS