



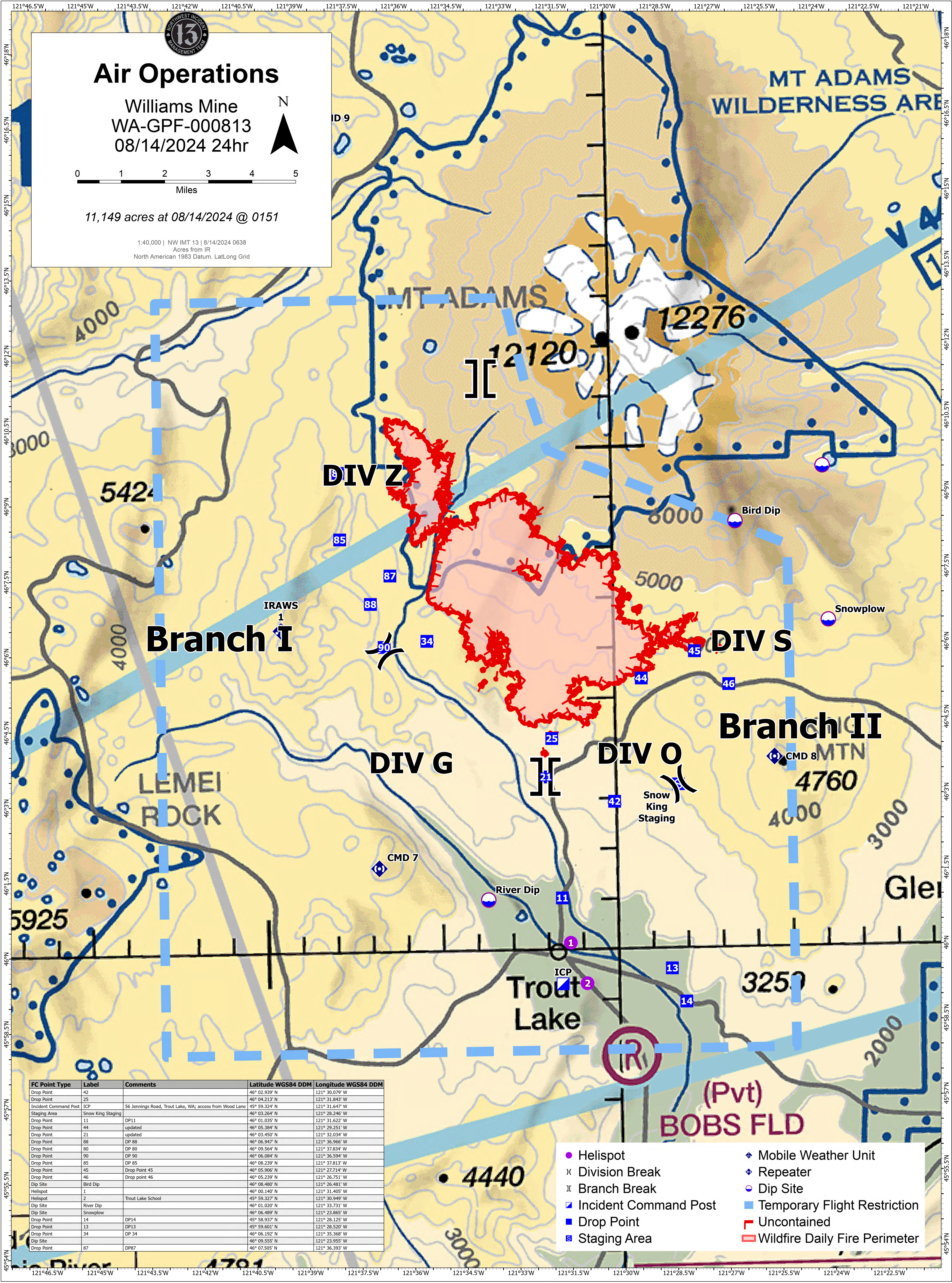
Air Operations

Williams Mine
WA-GPF-000813
08/14/2024 24hr



11,149 acres at 08/14/2024 @ 0151

1:40,000 | NW IMT 13 | 8/14/2024 0638
Acres from IR
North American 1983 Datum, LatLong Grid



FC Point Type	Label	Comments	Latitude WGS84 DDM	Longitude WGS84 DDM
Drop Point	42		46° 02.939' N	121° 30.079' W
Drop Point	25		46° 04.213' N	121° 31.843' W
Incident Command Post	ICP	56 Jennings Road, Trout Lake, WA; access from Wood Lane	45° 59.324' N	121° 31.647' W
Staging Area	Snow King Staging		46° 03.264' N	121° 28.246' W
Drop Point	11	DP11	46° 01.035' N	121° 31.622' W
Drop Point	44	updated	46° 05.384' N	121° 29.251' W
Drop Point	21	updated	46° 03.450' N	121° 32.034' W
Drop Point	88	DP 88	46° 06.947' N	121° 36.966' W
Drop Point	80	DP 80	46° 09.564' N	121° 37.834' W
Drop Point	90	DP 90	46° 06.084' N	121° 36.594' W
Drop Point	85	DP 85	46° 08.239' N	121° 37.813' W
Drop Point	45	Drop Point 45	46° 05.906' N	121° 27.714' W
Drop Point	46	Drop point 46	46° 05.239' N	121° 26.751' W
Dip Site	Bird Dip		46° 08.480' N	121° 26.481' W
Helispot	1		46° 00.140' N	121° 31.405' W
Helispot	2	Trout Lake School	45° 59.327' N	121° 30.949' W
Dip Site	River Dip		46° 01.020' N	121° 33.731' W
Dip Site	Snowplow		46° 06.489' N	121° 23.865' W
Drop Point	14	DP14	45° 58.937' N	121° 28.125' W
Drop Point	13	DP13	45° 59.601' N	121° 28.520' W
Drop Point	34	DP 34	46° 06.192' N	121° 35.368' W
Dip Site	21		46° 09.555' N	121° 23.955' W
Drop Point	87	DP87	46° 07.505' N	121° 36.393' W

- Helispot
- ⌘ Division Break
- ⌘ Branch Break
- Incident Command Post
- Drop Point
- Staging Area
- ◆ Mobile Weather Unit
- ◆ Repeater
- Dip Site
- Temporary Flight Restriction
- ▬ Uncontained
- ▬ Wildfire Daily Fire Perimeter