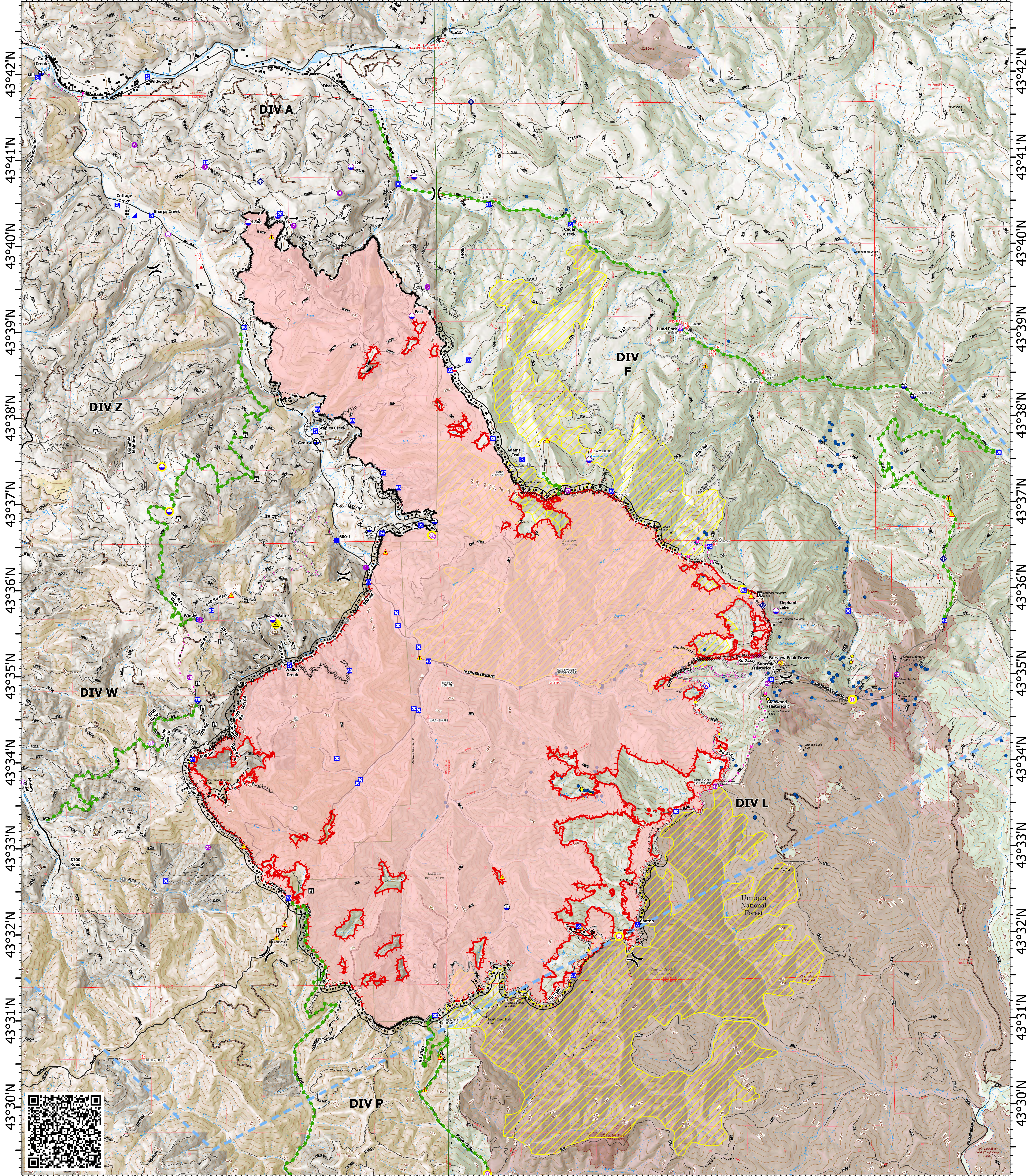


122°51'W 122°50'W 122°49'W 122°48'W 122°47'W 122°46'W 122°45'W 122°44'W 122°43'W 122°42'W 122°41'W 122°40'W 122°39'W 122°38'W 122°37'W 122°36'W




122°51'W 122°50'W 122°49'W 122°48'W 122°47'W 122°46'W 122°45'W 122°44'W 122°43'W 122°42'W 122°41'W 122°40'W 122°39'W 122°38'W 122°37'W 122°36'W

# Operations


**Cottage Grove - Lane 1**  
**OR-771S-000028**  
**8/14/2024 Day**

**24,103 acres at 20240814 @ 0044 PDT**

- Structure
- ✕ Division Break
- Incident Command Post
- Drop Point
- Staging Area
- Camp
- Closure
- Aerial Hazard
- Mobile Retardant Base
- Helispot
- Unimproved Landing Area
- UAS Launch and Recovery
- Lookout
- Value at Risk
- Landmark
- Gate
- Bridge
- Internet Access
- Repeater
- Safety Zone
- Hazard
- Dip Site
- Draft Site
- Restricted Water Source
- Proposed Points, In Review
- Mine Adits
- Foam Adits
- Completed Burnout
- Completed Dozer Line
- Completed Fuel Break
- Completed Hand Line
- Completed Mixed Construction Line
- Completed Road as Line
- Planned Dozer Line
- Planned Fuel Break
- Planned Hand Line
- Planned Mixed Construction Line
- Planned Road as Line
- Access Route
- Highlighted Feature
- Escape Route
- Temporary Flight Restriction
- Highway exit; Paved
- All weather Road
- Mainline Road
- Dirt Road
- Giustina Roads
- Contained
- Uncontained
- Fire Perimeter
- USFS Roadless Areas
- Inventoried Roadless Area
- Forest Service Land
- Bureau of Land Management Lands
- Interagency Fire Perimeter History Since 2004



1:25,000 | 08/14/2024 0611  
Acres from IR  
North American 1983 Datum, LatLong Grid



Miles