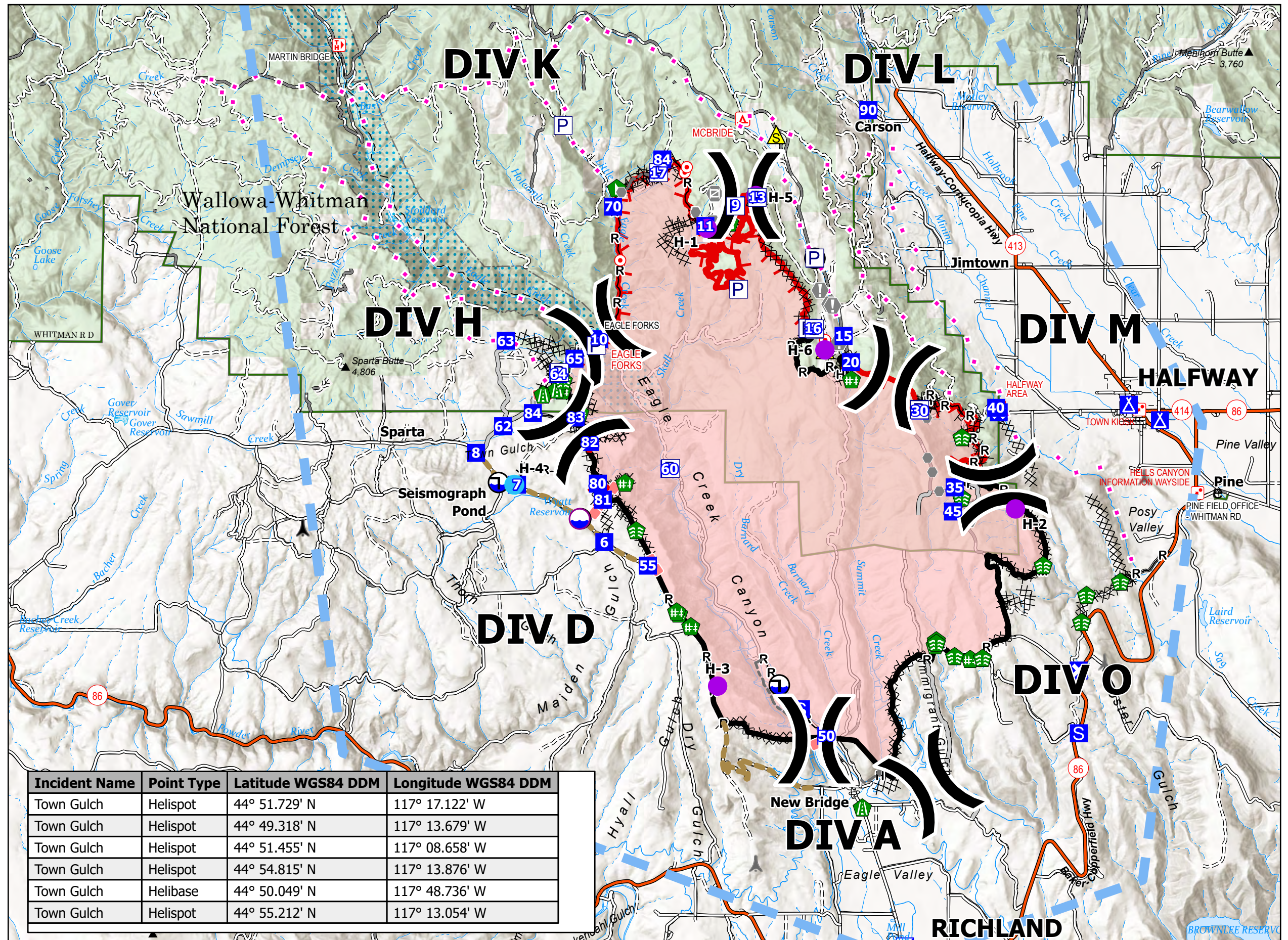


# Pilot Town Gulch

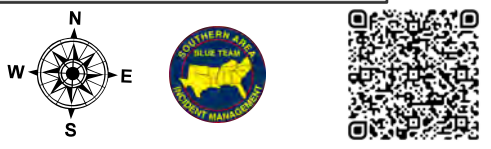
ORWWF-000431  
08/14/2024 Day  
18,188 acres at 20240813 0029hrs

## Legend

- Air Operations**
- Helispot
- Assignment Breaks**
- ) ( Division Break
- Logistics**
- ▣ Incident Command Post
- ▣ Drop Point
- ⊗ Closure
- ⚡ Camp
- Ⓢ Staging Area
- Fire**
- ⦿ Hot Spot - Spot Fire
- Reference**
- ⚡ Value at Risk
- Other
- Landmark
- Ⓜ Gate
- Ⓜ Bridge
- Repair**
- 🌿 Stream Crossing
- 🛠 Road Repair
- 🛠 Repair Point
- 🛠 Fence - Cut/Damaged
- 🛠 Dozer Push
- Safety**
- ⚠ Safety Zone
- Water**
- 🌊 Dip Site
- 🌊 Draft Site
- Ops Completed**
- ⊗ Completed Dozer Line
- H— Completed Hand Line
- M— Completed Mixed Construction Line
- R— Completed Road as Line
- Planning**
- ⋯ Proposed Line
- Reference**
- Access Route
- Fence
- Other
- Repair**
- 🛠 Road Repair
- Air Ops**
- 🔴 Retardant Drop
- 🔵 Temporary Flight Restriction
- Fire Perimeter**
- 🔴 Fire Edge (Field Collection)
- FC Line Type**
- Contained
- Uncontained
- Polygon Type**
- 🔴 Wildfire Daily Fire Perimeter
- ⚡ Tower 30' - 200'
- ⚡ Towers of Unknown Height



Incident Name	Point Type	Latitude WGS84 DDM	Longitude WGS84 DDM
Town Gulch	Helispot	44° 51.729' N	117° 17.122' W
Town Gulch	Helispot	44° 49.318' N	117° 13.679' W
Town Gulch	Helispot	44° 51.455' N	117° 08.658' W
Town Gulch	Helispot	44° 54.815' N	117° 13.876' W
Town Gulch	Helibase	44° 50.049' N	117° 48.736' W
Town Gulch	Helispot	44° 55.212' N	117° 13.054' W



1:48,000 | SA Blue Team | 8/13/2024 2024  
Acres from IR and GPS  
North American 1983 Datum, Lat/Long Grid