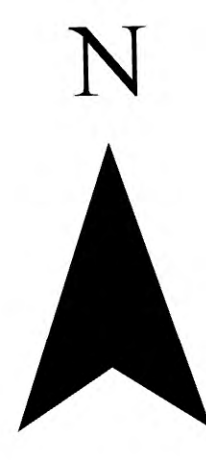




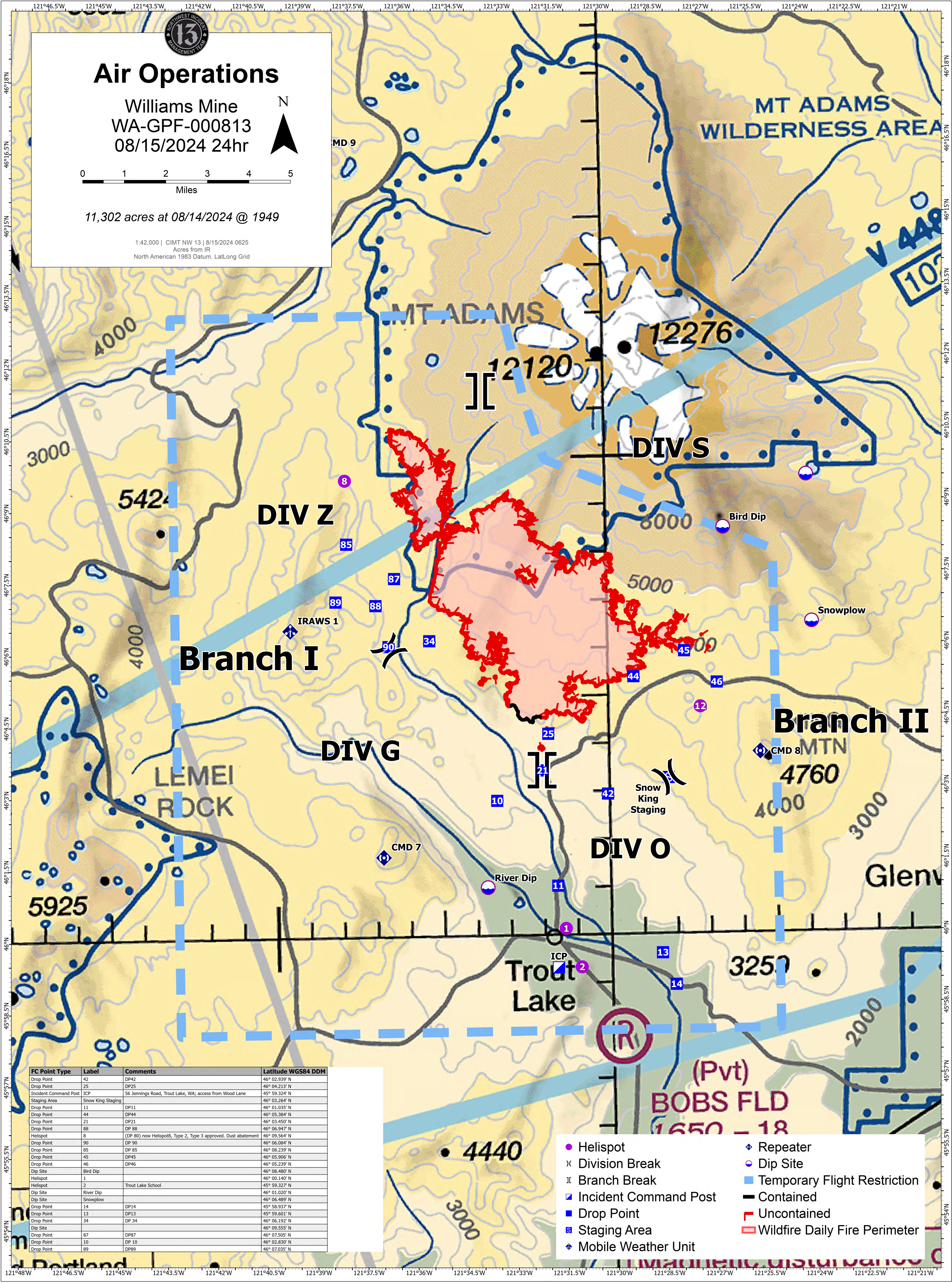
Air Operations

Williams Mine
WA-GPF-000813
08/15/2024 24hr



11,302 acres at 08/14/2024 @ 1949

1:42,000 | CIMT NW 13 | 8/15/2024 0625
Acres from IR
North American 1983 Datum, LatLong Grid



FC Point Type	Label	Comments	Latitude WGS84 DDM
Drop Point	42	DP42	46° 02.939' N
Drop Point	25	DP25	46° 04.213' N
Incident Command Post	ICP	56 Jennings Road, Trout Lake, WA; access from Wood Lane	45° 59.324' N
Staging Area	Snow King Staging		46° 03.264' N
Drop Point	11	DP11	46° 01.035' N
Drop Point	44	DP44	46° 05.384' N
Drop Point	21	DP21	46° 03.450' N
Drop Point	88	DP 88	46° 06.947' N
Helispot	8	(DP 80) now Helispot8, Type 2, Type 3 approved. Dust abatement	46° 09.564' N
Drop Point	90	DP 90	46° 06.084' N
Drop Point	85	DP 85	46° 08.239' N
Drop Point	45	DP45	46° 05.906' N
Drop Point	46	DP46	46° 05.239' N
Dip Site	Bird Dip		46° 08.489' N
Helispot	2	Trout Lake School	46° 00.140' N
Dip Site	River Dip		45° 59.327' N
Dip Site	Snowplow		46° 01.020' N
Drop Point	14	DP14	46° 06.489' N
Drop Point	13	DP13	45° 58.937' N
Drop Point	34	DP 34	45° 59.601' N
Dip Site			46° 06.192' N
Drop Point	87	DP87	46° 09.555' N
Drop Point	10	DP 10	46° 07.505' N
Drop Point	89	DP89	46° 02.830' N
Drop Point			46° 07.035' N

- Helispot
- ⌘ Division Break
- ⌘ Branch Break
- Incident Command Post
- Drop Point
- Staging Area
- ◆ Mobile Weather Unit
- ◆ Repeater
- Dip Site
- Temporary Flight Restriction
- Contained
- Uncontained
- ▭ Wildfire Daily Fire Perimeter