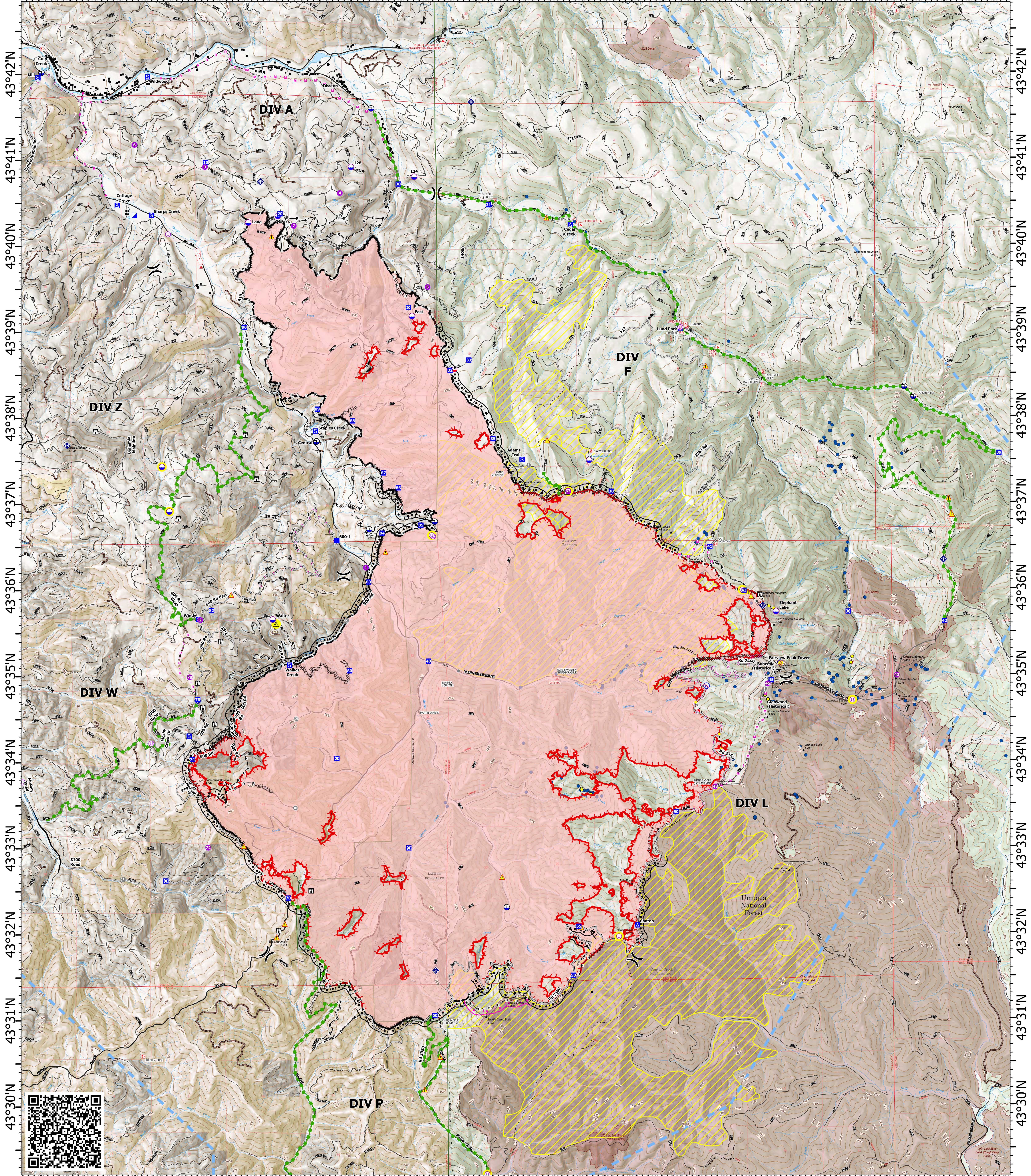


122°51'W 122°50'W 122°49'W 122°48'W 122°47'W 122°46'W 122°45'W 122°44'W 122°43'W 122°42'W 122°41'W 122°40'W 122°39'W 122°38'W 122°37'W 122°36'W



122°51'W 122°50'W 122°49'W 122°48'W 122°47'W 122°46'W 122°45'W 122°44'W 122°43'W 122°42'W 122°41'W 122°40'W 122°39'W 122°38'W 122°37'W 122°36'W

Operations

Cottage Grove - Lane 1

OR-771S-000028

8/15/2024 Day

24,592 acres at 20240814 @ 2223 PDT

- Structure
- ✕ Division Break
- Incident Command Post
- Drop Point
- Staging Area
- Camp
- Closure
- Aerial Hazard
- Mobile Retardant Base
- Helispot
- Unimproved Landing Area
- UAS Launch and Recovery
- Lookout
- Value at Risk
- Other
- Landmark
- Gate
- Bridge
- Mobile Weather Unit
- Internet Access
- Repeater
- ▲ Safety Zone
- ▲ Hazard
- ▲ Dip Site
- Draft Site
- Restricted Water Source
- Proposed Points, In Review
- Mine Adits
- Foam Adits
- Completed Burnout
- ▬ Completed Dozer Line
- ▬ Completed Fuel Break
- ▬ Completed Hand Line
- ▬ Completed Mixed Construction Line
- ▬ Completed Road as Line
- ▬ Planned Burnout
- ▬ Planned Dozer Line
- ▬ Planned Fuel Break
- ▬ Planned Hand Line
- ▬ Planned Mixed Construction Line
- ▬ Planned Road as Line
- ▬ Access Route
- ▬ Highlighted Feature
- ▬ Escape Route
- ▬ Temporary Flight Restriction
- ▬ Highway exit; Paved
- ▬ All weather Road
- ▬ Mainline Road
- ▬ Dirt Road
- ▬ Giustina Roads
- ▬ Contained
- ▬ Uncontained
- ▬ Fire Perimeter
- ▬ USFS Roadless Areas
- ▬ Inventoried Roadless Area
- ▬ Forest Service Land
- ▬ Bureau of Land Management Lands
- ▬ Interagency Fire Perimeter History Since 2004



1:25,000 | 08/15/2024 0704
Acres from IR
North American 1983 Datum. LatLong Grid

