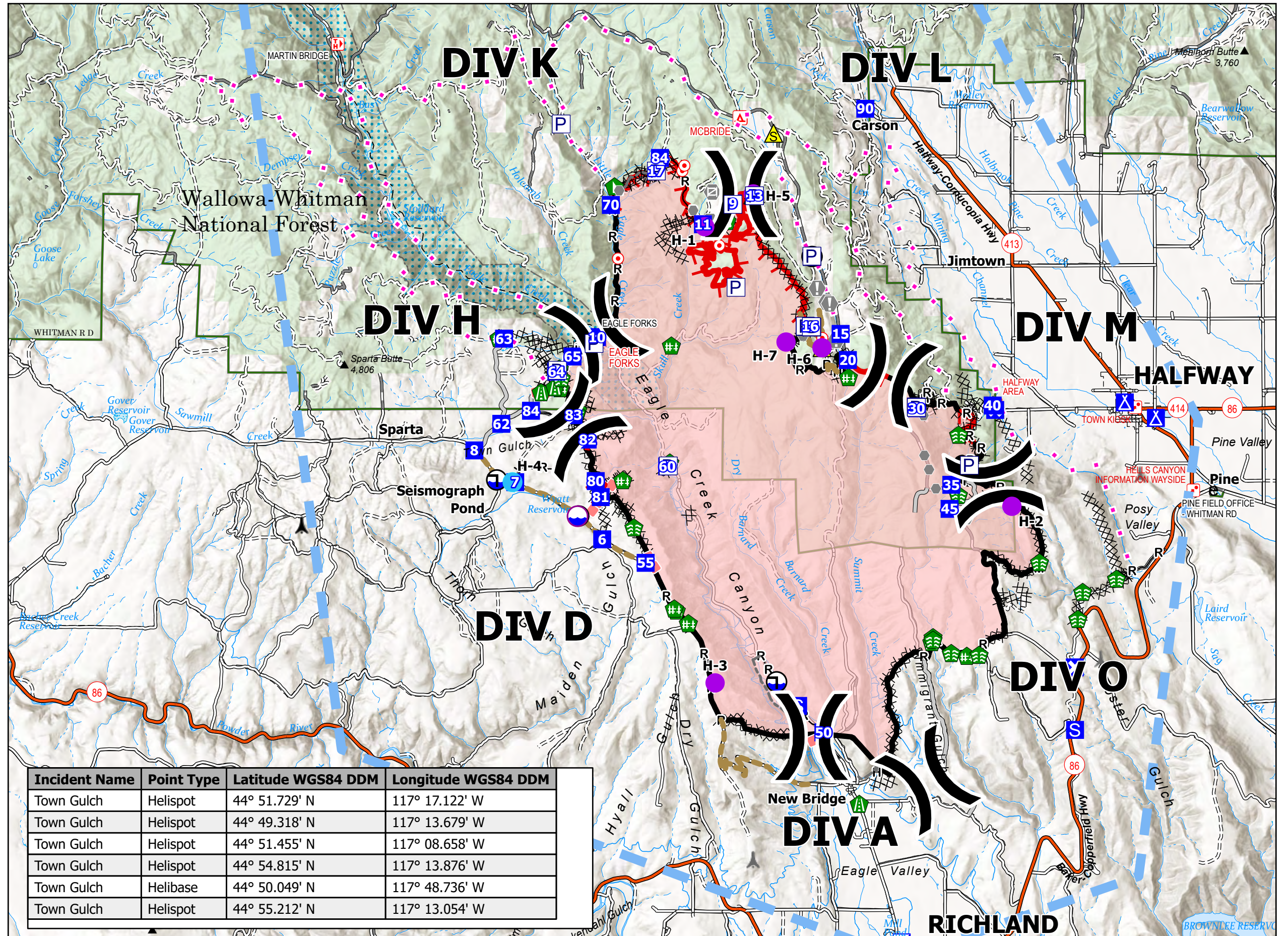


Pilot Town Gulch

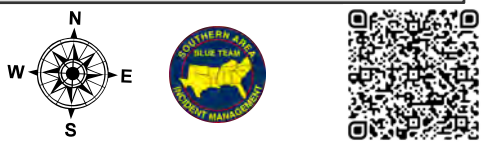
ORWWF-000431
08/15/2024 Day
18,188 acres at 20240813 0029hrs

Legend

- Air Operations**
 - Helispot
- Assignment Breaks**
 -) Division Break
- Logistics**
 - ▣ Incident Command Post
 - ▣ Drop Point
 - ⊗ Closure
 - ⊗ Camp
 - ⊗ Staging Area
- Fire**
 - Hot Spot - Spot Fire
- Reference**
 - ⊕ Value at Risk
 - Other
 - Landmark
 - ⊗ Gate
 - ⊗ Bridge
- Repair**
 - ⊗ Stream Crossing
 - ⊗ Road Repair
 - ⊗ Repair Point
 - ⊗ Fence - Cut/Damaged
 - ⊗ Dozer Push
- Safety**
 - ⚠ Safety Zone
- Water**
 - ⊕ Dip Site
 - ⊕ Draft Site
- Ops Completed**
 - ⊗ Completed Dozer Line
 - H— Completed Hand Line
 - M— Completed Mixed Construction Line
 - R— Completed Road as Line
- Planning**
 - ⋯ Proposed Line
- Reference**
 - Access Route
 - Fence
 - Other
- Repair**
 - Repair Line
 - Road Repair
- Air Ops**
 - Retardant Drop
 - ⊗ Temporary Flight Restriction
- Fire Perimeter**
 - ▬ Fire Edge (Field Collection)
 - ▬ FC Line Type
 - ▬ Contained
 - ▬ Uncontained
- Polygon Type**
 - ▬ Wildfire Daily Fire Perimeter
 - ▲ Tower 30' - 200'
 - ▲ Towers of Unknown Height



Incident Name	Point Type	Latitude WGS84 DDM	Longitude WGS84 DDM
Town Gulch	Helispot	44° 51.729' N	117° 17.122' W
Town Gulch	Helispot	44° 49.318' N	117° 13.679' W
Town Gulch	Helispot	44° 51.455' N	117° 08.658' W
Town Gulch	Helispot	44° 54.815' N	117° 13.876' W
Town Gulch	Helibase	44° 50.049' N	117° 48.736' W
Town Gulch	Helispot	44° 55.212' N	117° 13.054' W



1:48,000 | SA Blue Team | 8/14/2024 2020
Acres from IR and GPS
North American 1983 Datum, Lat/Long Grid