



Air Operations

Whisky Creek
 OR-MHF-000639
 08/15/2024 Day
 1,905 acres
 at 20240814 @ 0338 PDT

FC Point Type	Label	Longitude WGS84 DDM	Latitude WGS84 DDM	Elevation (Feet)
Aerial Hazard		121° 54.277' W	45° 41.195' N	
Aerial Hazard		121° 35.818' W	45° 34.768' N	
Aerial Hazard		121° 43.400' W	45° 38.817' N	
Aerial Hazard		121° 43.368' W	45° 38.920' N	
Aerial Hazard		121° 53.055' W	45° 39.840' N	
Aerial Hazard		121° 53.025' W	45° 39.859' N	
Aerial Hazard		121° 53.008' W	45° 39.883' N	
Aerial Hazard		121° 51.587' W	45° 40.964' N	
Aerial Hazard		121° 32.733' W	45° 40.820' N	
Aerial Hazard		121° 32.162' W	45° 42.093' N	
Airstrip or Airport	Ken Jernstedt (452)	121° 32.194' W	45° 40.435' N	610
Camp	Kingsley Spike	121° 40.801' W	45° 38.063' N	
Dip Site	Wahtum Dip	121° 47.638' W	45° 34.909' N	3780
Drop Point	52	121° 42.545' W	45° 37.892' N	
Drop Point	50	121° 44.537' W	45° 38.175' N	
Drop Point	49	121° 45.624' W	45° 37.637' N	
Drop Point	48	121° 45.592' W	45° 36.928' N	
Drop Point	11	121° 47.565' W	45° 34.651' N	
Drop Point	53	121° 41.572' W	45° 38.739' N	
Drop Point	54	121° 40.893' W	45° 37.974' N	
Drop Point	13	121° 48.074' W	45° 35.252' N	
Drop Point	55	121° 39.690' W	45° 39.450' N	
Drop Point	70	121° 36.594' W	45° 41.222' N	
Drop Point	60	121° 46.253' W	45° 37.768' N	
Drop Point	30	121° 46.178' W	45° 36.874' N	
Helispot	10	121° 45.588' W	45° 36.908' N	3790
Helispot	15	121° 48.195' W	45° 36.711' N	4445
Helispot	18	121° 49.905' W	45° 33.402' N	4425
Helispot	40	121° 41.618' W	45° 38.389' N	3515
Helispot	5	121° 45.947' W	45° 38.040' N	4650
Helispot	20	121° 47.167' W	45° 35.707' N	4400
Mobile Weather Unit	IRAWS-48	121° 43.356' W	45° 38.915' N	
Repeater	CMD 7	121° 43.338' W	45° 38.922' N	
Repeater	CMD 9	121° 49.903' W	45° 33.358' N	
Unimproved Landing Area	50	121° 40.428' W	45° 38.465' N	3190

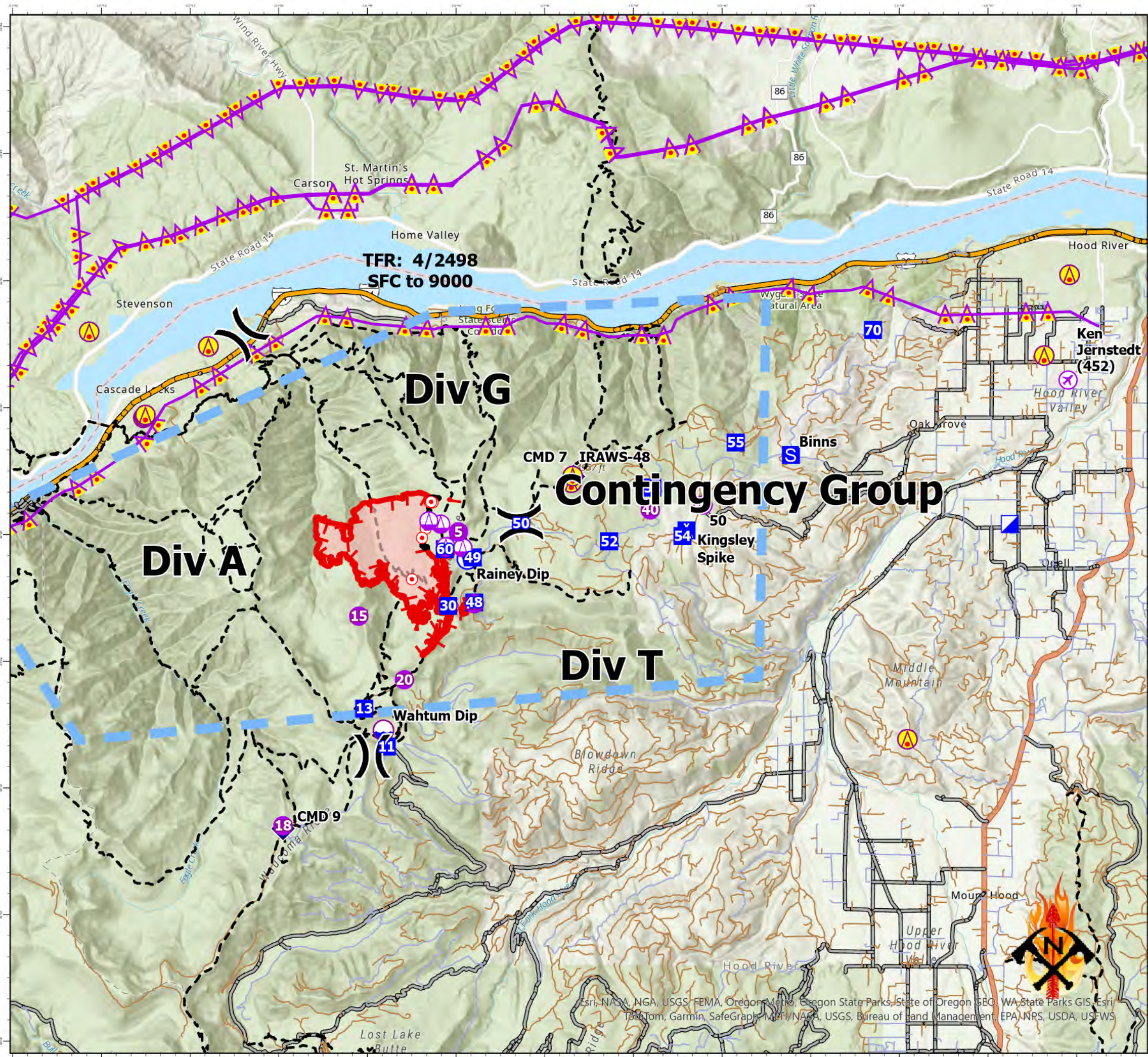
	Aerial Hazard		Camp		Temporary Flight Restriction
	Airstrip or Airport		Staging Area		Contained
	Helispot		Hot Spot - Spot Fire		Uncontained
	Sling Site		Mobile Weather Unit		Wildfire Daily Fire Perimeter
	Unimproved Landing Area		Repeater		Trails Plus GTAC
	Division Break		Dip Site		Interstate
	Incident Command Post		Restricted Water Source		Federal or State highway
	Drop Point		Aerial Hazard		Paved
			Aerial Hazard		All weather
			Aerial Hazard		Dirt



Incident Frequencies

Name	AM_FM	RX	TX
A/A Primary	TFR-AM	123.6500	123.6500
A/A (Rotor)	AM	118.7750	118.7750
A/G Primary	FM	164.9500	164.9500
A/G Secondary	FM	167.0750	167.0750

8/14/2024, 2047 hrs
 Acres from IR
 WGS 1984 Datum. LatLong Grid



Esri, NASA, NGA, USGS, FEMA, Oregon Metro, Oregon State Parks, State of Oregon, GEO, WA State Parks GIS, Esri, TomTom, Garmin, SafeGraph, METI/NASA, USGS, Bureau of Land Management, EPA, NPS, USDA, USFWS