



Air Operations

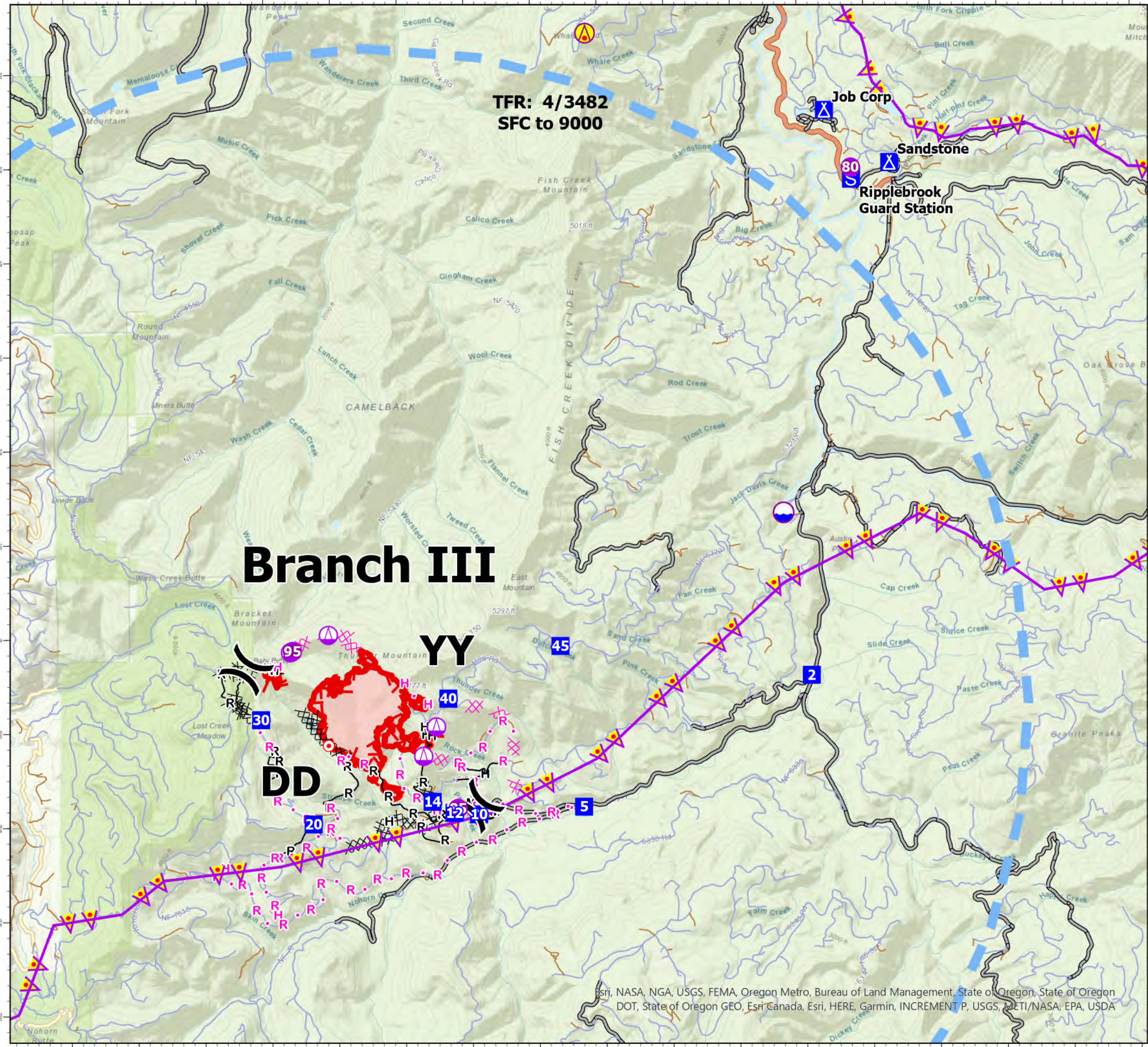
Sandstone
 OR-MHF-000818
 683 acres
 Blister Creek
 OR-MHF-000808
 16 acres
 08/15/2024 Day
 Acres updated
 Aug 14, 2024 @ 1950 PDT

FC Point Type	Label	Longitude WGS84 DDM	Latitude WGS84 DDM	Elevation (Feet)
Aerial Hazard		122° 07.177' W	45° 06.391' N	
Camp	Sandstone	122° 02.628' W	45° 04.984' N	
Camp	Job Corp	122° 03.598' W	45° 05.547' N	
Dip Site		122° 04.272' W	45° 01.276' N	
Drop Point	12	122° 09.250' W	44° 58.122' N	
Drop Point	10	122° 08.881' W	44° 58.104' N	
Drop Point	30	122° 12.129' W	44° 59.127' N	
Drop Point	14	122° 09.576' W	44° 58.242' N	
Drop Point	5	122° 07.308' W	44° 58.174' N	
Drop Point	20	122° 11.360' W	44° 58.015' N	
Drop Point	40	122° 09.324' W	44° 59.336' N	
Drop Point	2	122° 03.879' W	44° 59.547' N	
Drop Point	45	122° 07.637' W	44° 59.883' N	
Helispot	80	122° 03.211' W	45° 04.936' N	
Helispot	85	122° 09.193' W	44° 58.168' N	2500
Helispot	95	122° 11.651' W	44° 59.853' N	

- Trail
- Mainline Rd
- Federal or State highway
- Paved
- All weather
- Dirt
- Aerial Hazard
- Helispot
- Sling Site
- Division Break
- Drop Point
- Camp
- Staging Area
- Hot Spot - Spot Fire
- Dip Site
- Completed Dozer Line
- Completed Hand Line
- Completed Mixed Construction Line
- Completed Road as Line
- Planned Dozer Line
- Planned Hand Line
- Planned Mixed Construction Line
- Planned Road as Line
- Aerial Hazard
- Temporary Flight Restriction
- Uncontained
- Wildfire Daily Fire Perimeter

Incident Frequencies

Name	AM_FM	RX	RX_Tone	TX	TX_Tone
A/A Primary	TFR-AM	120.1500		120.1500	
A/A (Rotor)	AM	128.6750		128.6750	
A/G Primary	FM	167.1750		167.1750	
A/G Secondary	FM	171.9000		171.9000	



8/14/2024, 0912 hrs
 Acres from IR Acres from IR
 North American 1983 Datum. LatLong Grid

Esri, NASA, NGA, USGS, FEMA, Oregon Metro, Bureau of Land Management, State of Oregon, State of Oregon DOT, State of Oregon GEO, Esri Canada, Esri, HERE, Garmin, INCREMENT P, USGS, METI/NASA, EPA, USDA