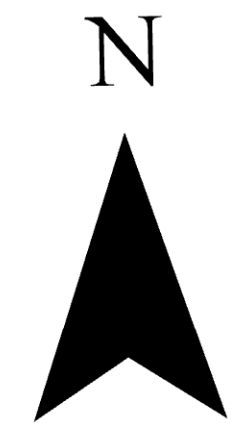


Air Operations

Williams Mine
WA-GPF-000813
08/16/2024 24hr



11,302 acres at 08/14/2024 @ 1949

1:42,000 | CIMT NW 13 | 8/15/2024 2033
Acres from IR
North American 1983 Datum, Lat/Long Grid

LOCALLY IDENTIFIED VERTICAL OBSTRUCTIONS
(Towers, lookouts and repeaters of unknown height shown in Black. Towers, lookouts and repeaters < 200ft AGL shown in gray. All others shown in Red)

- Tower
- Lookout
- Repeater
- Overhead Cables
- Blasting Area
- Radio Base Site
- Radio Aviation Site
- Radio Secondary Base Sites
- Bridges
- Main Power Lines
- Wire Hazards
- Aerial Recreation Areas

NATIONAL WIND FACILITY HAZARDS (FAA)

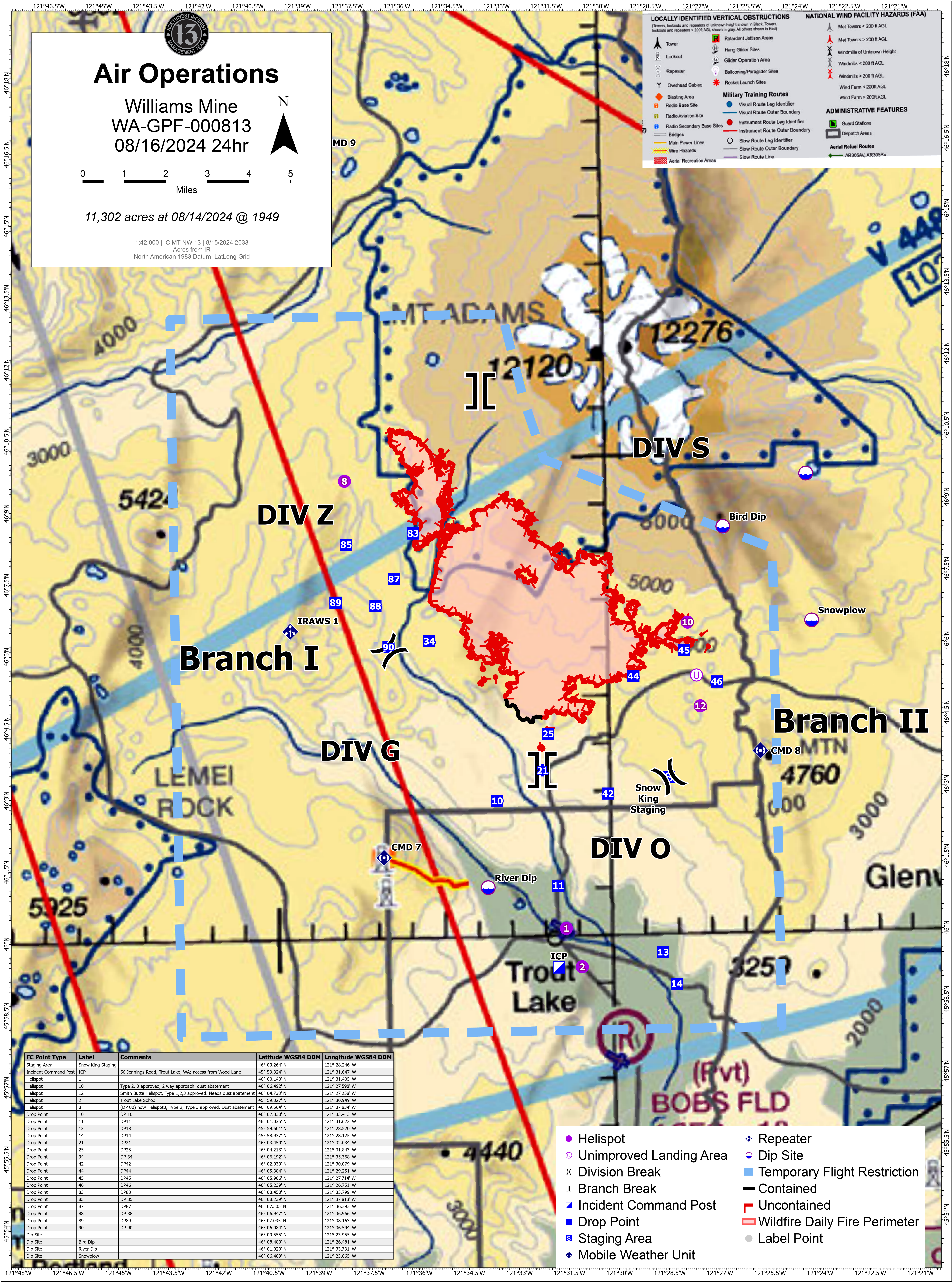
- Retardant Jetison Areas
- Hang Glider Sites
- Glider Operation Area
- Ballooning/Paraglider Sites
- Rocket Launch Sites
- Met Towers < 200 ft AGL
- Met Towers > 200 ft AGL
- Windmills of Unknown Height
- Windmills < 200 ft AGL
- Windmills > 200 ft AGL
- Wind Farm < 200ft AGL
- Wind Farm > 200ft AGL

Military Training Routes

- Visual Route Leg Identifier
- Visual Route Outer Boundary
- Instrument Route Leg Identifier
- Instrument Route Outer Boundary
- Slow Route Leg Identifier
- Slow Route Outer Boundary
- Slow Route Line

ADMINISTRATIVE FEATURES

- Guard Stations
- Dispatch Areas
- Aerial Refuel Routes (AR305AV, AR305BV)



FC Point Type	Label	Comments	Latitude WGS84 DDM	Longitude WGS84 DDM
Staging Area	Snow King Staging		46° 03.264' N	121° 28.246' W
Incident Command Post	ICP	56 Jennings Road, Trout Lake, WA; access from Wood Lane	45° 59.324' N	121° 31.647' W
Helispot	1		46° 00.140' N	121° 31.405' W
Helispot	10	Type 2, 3 approved, 2 way approach, dust abatement	46° 06.492' N	121° 27.598' W
Helispot	12	Smith Butte Helispot, Type 1,2,3 approved. Needs dust abatement	46° 04.738' N	121° 27.258' W
Helispot	2	Trout Lake School	45° 59.327' N	121° 30.949' W
Helispot	8	(DP 80) now Helispot8, Type 2, Type 3 approved. Dust abatement	46° 09.564' N	121° 37.834' W
Drop Point	10	DP 10	46° 02.830' N	121° 33.413' W
Drop Point	11	DP11	46° 01.035' N	121° 31.622' W
Drop Point	13	DP13	45° 59.601' N	121° 28.520' W
Drop Point	14	DP14	45° 58.937' N	121° 28.125' W
Drop Point	21	DP21	46° 03.450' N	121° 32.034' W
Drop Point	25	DP25	46° 04.213' N	121° 31.943' W
Drop Point	34	DP 34	46° 06.192' N	121° 35.368' W
Drop Point	42	DP42	46° 02.939' N	121° 30.079' W
Drop Point	44	DP44	46° 05.384' N	121° 29.251' W
Drop Point	45	DP45	46° 05.906' N	121° 27.714' W
Drop Point	46	DP46	46° 05.239' N	121° 26.751' W
Drop Point	83	DP83	46° 08.450' N	121° 35.799' W
Drop Point	85	DP 85	46° 08.239' N	121° 37.813' W
Drop Point	87	DP87	46° 07.505' N	121° 36.393' W
Drop Point	88	DP 88	46° 06.947' N	121° 36.966' W
Drop Point	89	DP89	46° 07.035' N	121° 38.163' W
Drop Point	90	DP 90	46° 06.084' N	121° 36.594' W
Dip Site			46° 09.555' N	121° 23.955' W
Dip Site	Bird Dip		46° 08.480' N	121° 26.481' W
Dip Site	River Dip		46° 01.020' N	121° 33.731' W
Dip Site	Snowplow		46° 06.489' N	121° 23.865' W

- Helispot
- Unimproved Landing Area
- ⌘ Division Break
- ⌚ Branch Break
- ▣ Incident Command Post
- Drop Point
- ▣ Staging Area
- ◆ Mobile Weather Unit
- ◆ Repeater
- Dip Site
- ⌚ Temporary Flight Restriction
- ▬ Contained
- ▬ Uncontained
- ▭ Wildfire Daily Fire Perimeter
- Label Point