

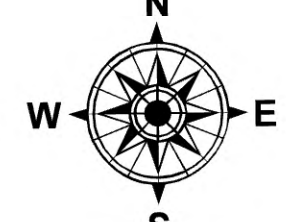
116°14.5'W 116°14'W 116°13.5'W 116°13'W 116°12.5'W 116°12'W 116°11.5'W 116°11'W 116°10.5'W 116°10'W 116°9.5'W 116°9'W 116°8.5'W 116°8'W 116°7.5'W 116°7'W 116°6.5'W 116°6'W 116°5.5'W 116°5'W 116°4.5'W 116°4'W 116°3.5'W 116°3'W 116°2.5'W 116°2'W 116°1.5'W 116°1'W 116°0.5'W 116°W 115°59.5'W 115°59'W

Air Ops

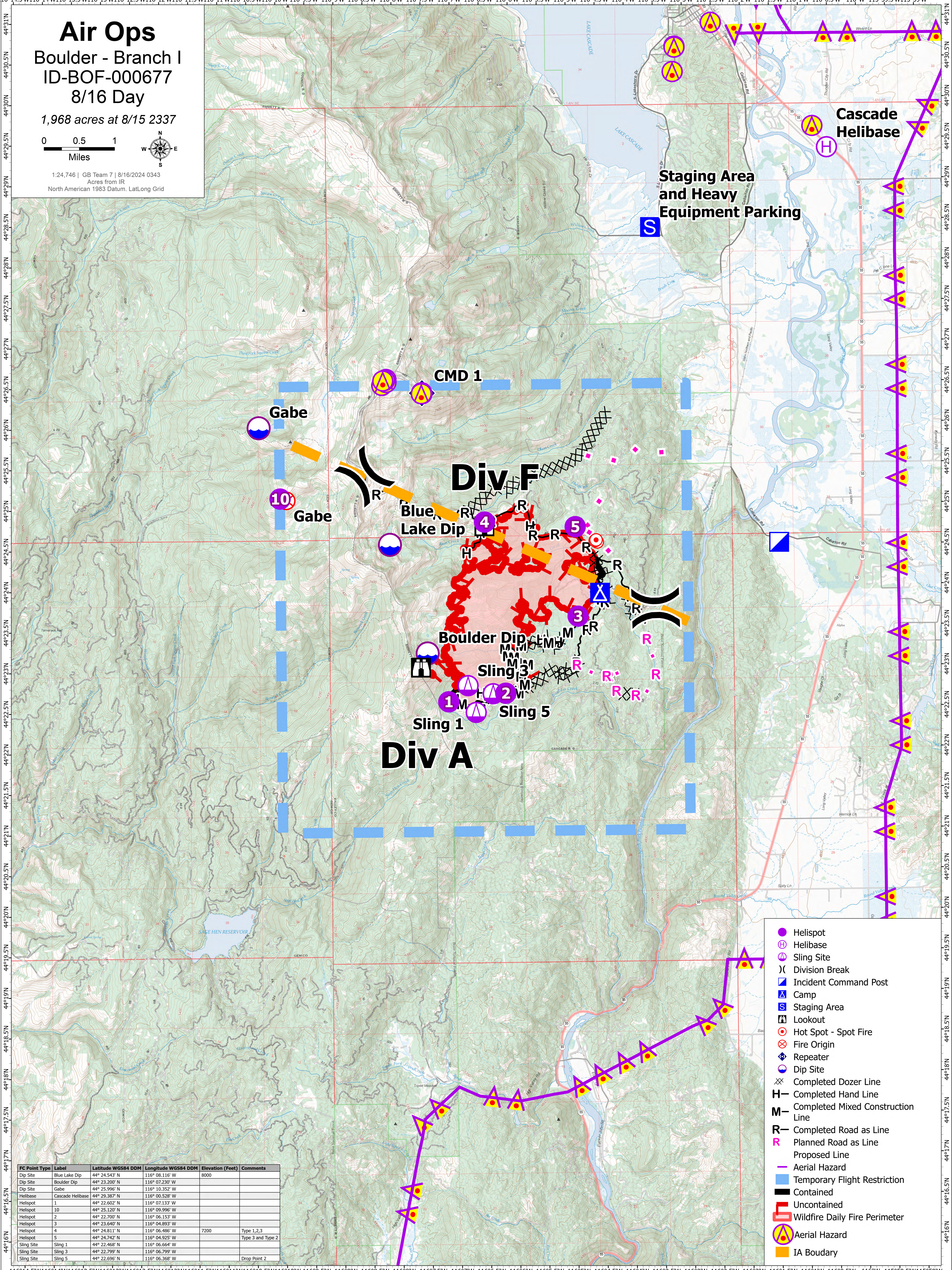
Boulder - Branch I
ID-BOF-000677
8/16 Day

1,968 acres at 8/15 2337

0 0.5 1
Miles



1:24,746 | GB Team 7 | 8/16/2024 0343
Acres from IR
North American 1983 Datum, Lat/Long Grid



- Helispot
- Helibase
- Sling Site
- Division Break
- Incident Command Post
- Camp
- Staging Area
- Lookout
- Hot Spot - Spot Fire
- Fire Origin
- Repeater
- Dip Site
- Completed Dozer Line
- Completed Hand Line
- Completed Mixed Construction Line
- Completed Road as Line
- Planned Road as Line
- Aerial Hazard
- Temporary Flight Restriction
- Uncontained
- Wildfire Daily Fire Perimeter
- Aerial Hazard
- IA Boundary

FC Point Type	Label	Latitude WGS84 DDM	Longitude WGS84 DDM	Elevation (Feet)	Comments
Dip Site	Blue Lake Dip	44° 24.543' N	116° 08.116' W	8000	
Dip Site	Boulder Dip	44° 23.200' N	116° 07.230' W		
Dip Site	Gabe	44° 25.996' N	116° 10.352' W		
Helibase	Cascade Helibase	44° 29.387' N	116° 00.528' W		
Helispot	1	44° 22.602' N	116° 07.133' W		
Helispot	10	44° 25.120' N	116° 09.996' W		
Helispot	2	44° 22.700' N	116° 06.153' W		
Helispot	3	44° 23.640' N	116° 04.883' W		
Helispot	4	44° 24.811' N	116° 06.486' W	7200	Type 1,2,3
Helispot	5	44° 24.742' N	116° 04.925' W		Type 3 and Type 2
Sling Site	Sling 1	44° 22.468' N	116° 06.664' W		
Sling Site	Sling 3	44° 22.799' N	116° 06.799' W		
Sling Site	Sling 5	44° 22.696' N	116° 06.368' W		Drop Point 2

116°14.5'W 116°14'W 116°13.5'W 116°13'W 116°12.5'W 116°12'W 116°11.5'W 116°11'W 116°10.5'W 116°10'W 116°9.5'W 116°9'W 116°8.5'W 116°8'W 116°7.5'W 116°7'W 116°6.5'W 116°6'W 116°5.5'W 116°5'W 116°4.5'W 116°4'W 116°3.5'W 116°3'W 116°2.5'W 116°2'W 116°1.5'W 116°1'W 116°0.5'W 116°W 115°59.5'W 115°59'W