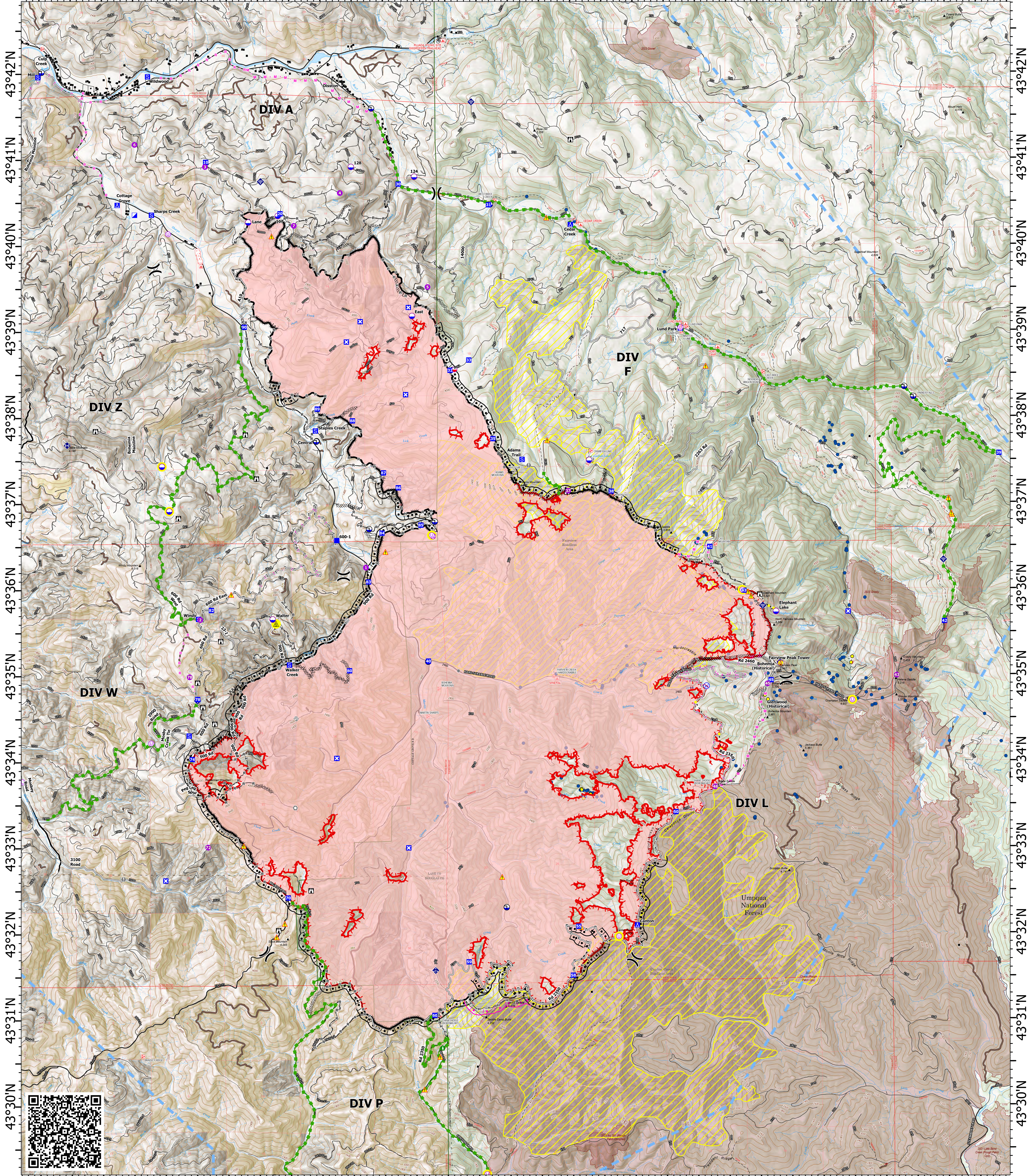


122°51'W 122°50'W 122°49'W 122°48'W 122°47'W 122°46'W 122°45'W 122°44'W 122°43'W 122°42'W 122°41'W 122°40'W 122°39'W 122°38'W 122°37'W 122°36'W



122°51'W 122°50'W 122°49'W 122°48'W 122°47'W 122°46'W 122°45'W 122°44'W 122°43'W 122°42'W 122°41'W 122°40'W 122°39'W 122°38'W 122°37'W 122°36'W

Operations

Cottage Grove - Lane 1
OR-771S-000028
8/16/2024 Day

24,934 acres at 20240816 @ 0114 PDT

- Structure
- ✕ Division Break
- ▲ Incident Command Post
- Drop Point
- Staging Area
- Camp
- Closure
- Aerial Hazard
- Mobile Retardant Base
- Helispot
- Unimproved Landing Area
- UAS Launch and Recovery
- Lookout
- Value at Risk
- Other
- Landmark
- Gate
- Bridge
- Hazard Tree
- Mobile Weather Unit
- Internet Access
- Repeater
- Safety Zone
- Hazard
- Dip Site
- Draft Site
- Restricted Water Source
- Proposed Points, In Review
- Mine Adits
- Foam Adits
- Completed Burnout
- ▨ Completed Dozer Line
- ▨ Completed Fuel Break
- ▨ Completed Hand Line
- ▨ Completed Mixed Construction Line
- ▨ Completed Road as Line
- ▨ Planned Burnout
- ▨ Planned Dozer Line
- ▨ Planned Fuel Break
- ▨ Planned Hand Line
- ▨ Planned Mixed Construction Line
- ▨ Planned Road as Line
- ▨ Access Route
- ▨ Highlighted Feature
- ▨ Escape Route
- ▨ Temporary Flight Restriction
- ▨ Highway exit, Paved
- ▨ All weather Road
- ▨ Mainline Road
- ▨ Dirt Road
- ▨ Giustina Roads
- ▨ Contained
- ▨ Uncontained
- ▨ Fire Perimeter
- ▨ USFS Roadless Areas
- ▨ Inventoried Roadless Area
- ▨ Forest Service Land
- ▨ Bureau of Land Management Lands
- ▨ Interagency Fire Perimeter History Since 2004



1:25,000 | 08/16/2024 0602
Acres from IR
North American 1983 Datum. Lat/Long Grid

