



# Air Operations

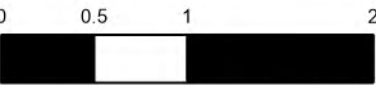
Sandstone  
 OR-MHF-000818  
 696 acres  
 Blister Creek  
 OR-MHF-000808  
 17 acres  
 08/16/2024 Day  
 Acres updated  
 20240814 @ 2024 PDT

FC Point Type	Label	Longitude WGS84 DDM	Latitude WGS84 DDM	Elevation (Feet)
Camp	Sandstone	122° 02.628' W	45° 04.984' N	
Camp	Job Corp	122° 03.598' W	45° 05.547' N	
Dip Site		122° 04.272' W	45° 01.276' N	
Drop Point	112	122° 09.250' W	44° 58.122' N	
Drop Point	110	122° 08.881' W	44° 58.104' N	
Drop Point	30	122° 12.129' W	44° 59.127' N	
Drop Point	114	122° 09.576' W	44° 58.242' N	
Drop Point	105	122° 07.308' W	44° 58.174' N	
Drop Point	120	122° 11.360' W	44° 58.015' N	
Drop Point	140	122° 09.324' W	44° 59.336' N	
Drop Point	102	122° 03.879' W	44° 59.547' N	
Drop Point	145	122° 07.637' W	44° 59.883' N	
Drop Point	125	122° 10.953' W	44° 58.752' N	
Drop Point	30	122° 12.082' W	44° 59.116' N	
Helispot	180	122° 03.211' W	45° 04.936' N	
Helispot	185	122° 09.193' W	44° 58.168' N	2500
Helispot	195	122° 11.651' W	44° 59.853' N	
Helispot	197	122° 11.161' W	44° 59.558' N	
Repeater	CMD 6	122° 07.177' W	45° 06.391' N	

- Mainline Rd
- Federal or State highway
- Paved
- All weather
- Dirt
- Helispot
- Sling Site
- Division Break
- Drop Point
- Camp
- Staging Area
- Hot Spot - Spot Fire
- Repeater
- Dip Site
- Completed Dozer Line
- Completed Hand Line
- Completed Mixed Construction Line
- Planned Dozer Line
- Planned Hand Line
- Planned Road as Line
- Aerial Hazard
- Temporary Flight Restriction
- Contained
- Uncontained
- Wildfire Daily Fire Perimeter

## Incident Frequencies

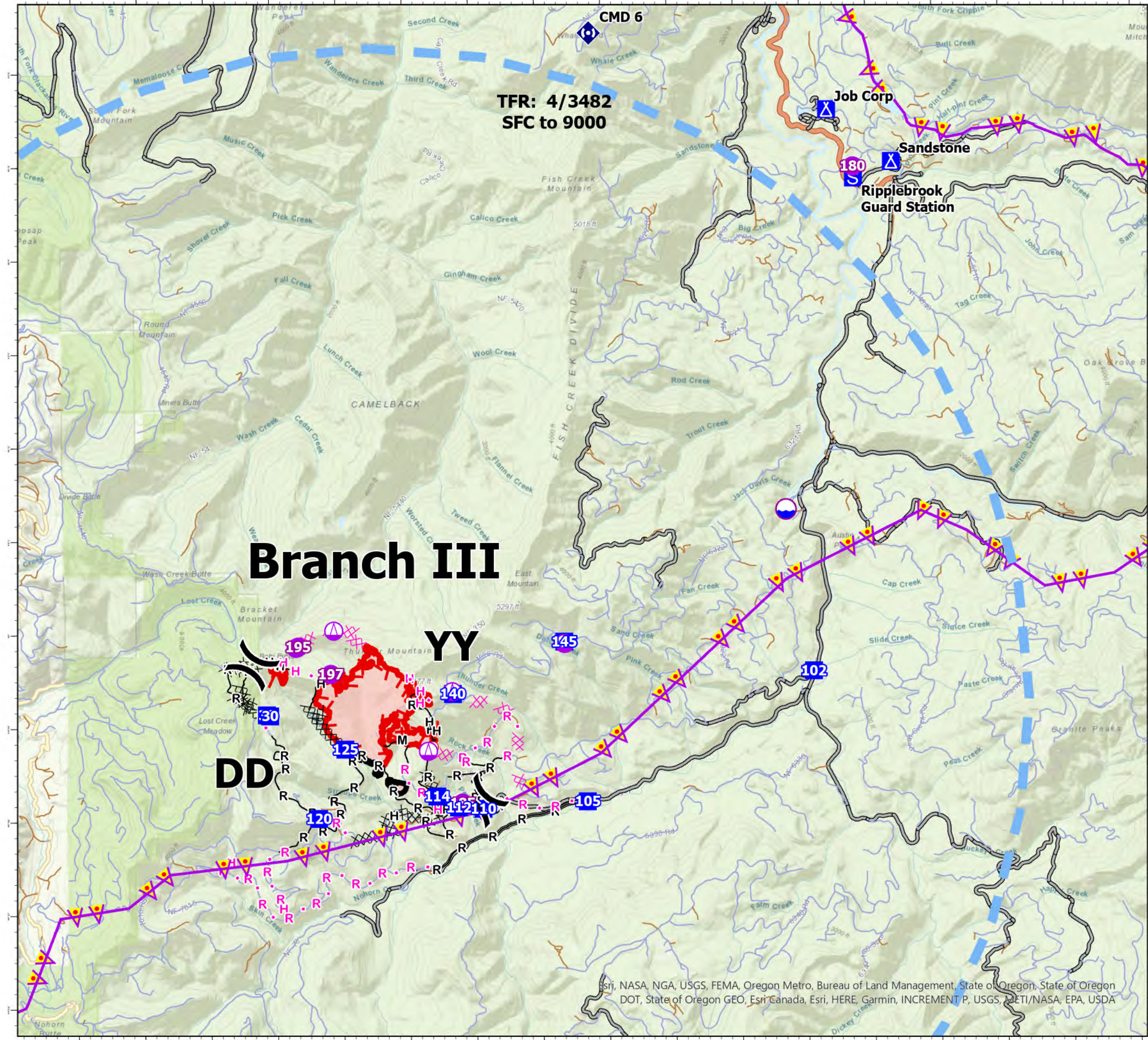
Name	AM_FM	RX	RX_Tone	TX	TX_Tone
A/A Primary	TFR-AM	120.1500		120.1500	
A/A (Rotor)	AM	128.6750		128.6750	
A/G Primary	FM	167.1750		167.1750	
A/G Secondary	FM	171.9000		171.9000	



Nautical Miles



8/15/2024, 2036 hrs  
 Acres from IR Acres from IR  
 North American 1983 Datum. LatLong Grid



Esri, NASA, NGA, USGS, FEMA, Oregon Metro, Bureau of Land Management, State of Oregon, State of Oregon DOT, State of Oregon GEO, Esri Canada, Esri, HERE, Garmin, INCREMENT P, USGS, METI/NASA, EPA, USDA