



# Air Operations

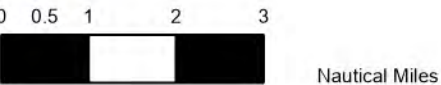
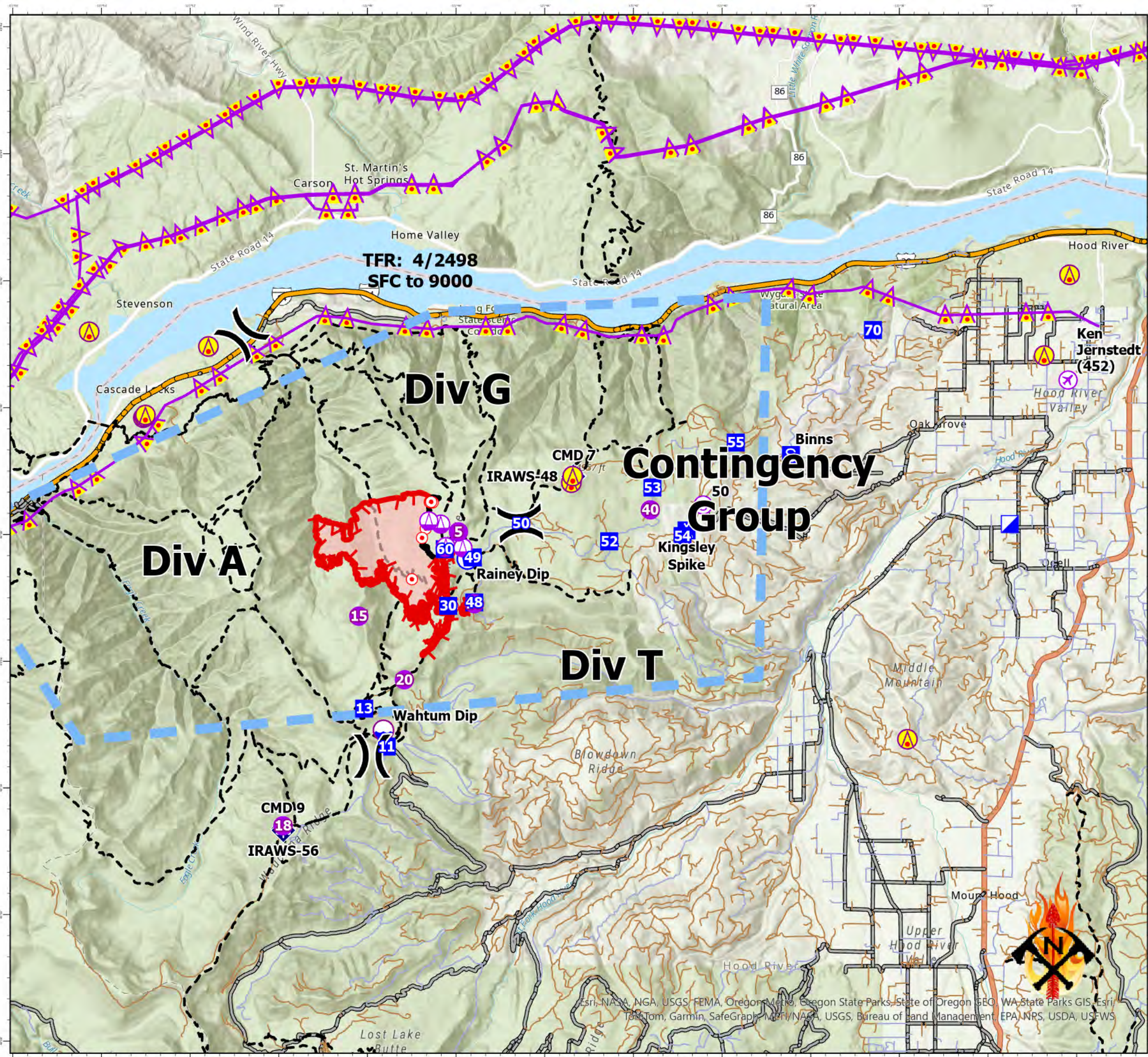
Whisky Creek  
 OR-MHF-000639  
 08/16/2024 Day  
 1,938 acres  
 at 20240814 @ 2014 PDT

FC Point Type	Label	Longitude WGS84 DDM	Latitude WGS84 DDM	Elevation (Feet)
Aerial Hazard		121° 54.277' W	45° 41.195' N	
Aerial Hazard		121° 35.818' W	45° 34.768' N	
Aerial Hazard		121° 43.400' W	45° 38.817' N	
Aerial Hazard		121° 43.368' W	45° 38.920' N	
Aerial Hazard		121° 53.055' W	45° 39.840' N	
Aerial Hazard		121° 53.025' W	45° 39.859' N	
Aerial Hazard		121° 53.008' W	45° 39.883' N	
Aerial Hazard		121° 51.587' W	45° 40.964' N	
Aerial Hazard		121° 32.733' W	45° 40.820' N	
Aerial Hazard		121° 32.162' W	45° 42.093' N	
Airstrip or Airport	Ken Jernstedt (452)	121° 32.194' W	45° 40.435' N	610
Camp	Kingsley Spike	121° 40.801' W	45° 38.063' N	
Dip Site	Wahtum Dip	121° 47.638' W	45° 34.909' N	3780
Drop Point	52	121° 42.545' W	45° 37.892' N	
Drop Point	50	121° 44.537' W	45° 38.175' N	
Drop Point	49	121° 45.624' W	45° 37.637' N	
Drop Point	48	121° 45.592' W	45° 36.928' N	
Drop Point	11	121° 47.565' W	45° 34.651' N	
Drop Point	53	121° 41.572' W	45° 38.739' N	
Drop Point	54	121° 40.893' W	45° 37.974' N	
Drop Point	13	121° 48.074' W	45° 35.252' N	
Drop Point	55	121° 39.690' W	45° 39.450' N	
Drop Point	70	121° 36.594' W	45° 41.222' N	
Drop Point	60	121° 46.253' W	45° 37.768' N	
Drop Point	30	121° 46.178' W	45° 36.874' N	
Helispot	10	121° 45.588' W	45° 36.908' N	3790
Helispot	15	121° 48.195' W	45° 36.711' N	4445
Helispot	18	121° 49.905' W	45° 33.402' N	4425
Helispot	40	121° 41.618' W	45° 38.389' N	3515
Helispot	5	121° 45.947' W	45° 38.040' N	4650
Helispot	20	121° 47.167' W	45° 35.707' N	4400
Mobile Weather Unit	IRAWS-48	121° 43.356' W	45° 38.915' N	
Mobile Weather Unit	IRAWS-56	121° 49.897' W	45° 33.331' N	
Repeater	CMD 7	121° 43.338' W	45° 38.922' N	
Repeater	CMD 9	121° 49.903' W	45° 33.358' N	
Unimproved Landing Area	50	121° 40.428' W	45° 38.465' N	3190

- Aerial Hazard
- Airstrip or Airport
- Helispot
- Sling Site
- Unimproved Landing Area
- Division Break
- Incident Command Post
- Drop Point
- Camp
- Staging Area
- Hot Spot - Spot Fire
- Mobile Weather Unit
- Repeater
- Dip Site
- Restricted Water Source
- Temporary Flight Restriction
- Contained
- Uncontained
- Wildfire Daily Fire Perimeter
- Trails Plus GTAC
- Interstate
- Federal or State highway
- Paved
- All weather
- Dirt

## Incident Frequencies

Name	AM_FM	RX	TX
A/A Primary	TFR-AM	123.6500	123.6500
A/A (Rotor)	AM	118.7750	118.7750
A/G Primary	FM	164.9500	164.9500
A/G Secondary	FM	167.0750	167.0750



8/14/2024, 2053 hrs  
 Acres from IR  
 WGS 1984 Datum. LatLong Grid

Esri, NASA, NGA, USGS, FEMA, Oregon Metro, Oregon State Parks, State of Oregon, GEO, WA State Parks GIS, Esri, TomTom, Garmin, SafeGraph, METI/NASA, USGS, Bureau of Land Management, EPA, NPS, USDA, USFWS