

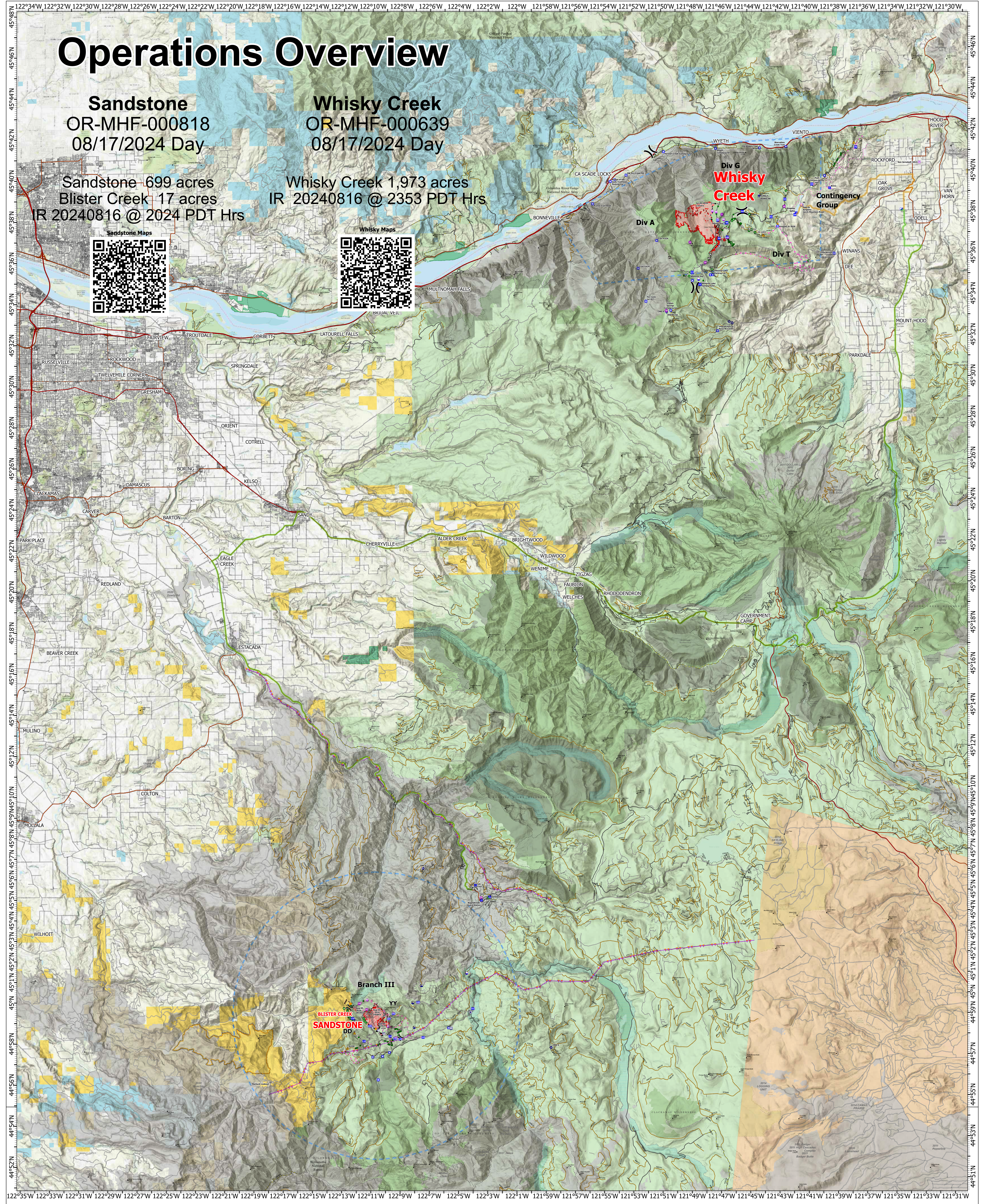
# Operations Overview

**Sandstone**  
OR-MHF-000818  
08/17/2024 Day

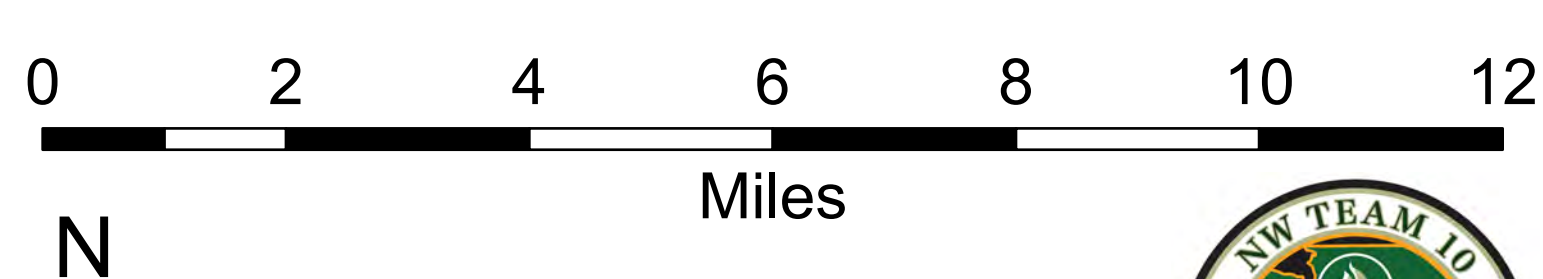
**Whisky Creek**  
OR-MHF-000639  
08/17/2024 Day

Sandstone 699 acres  
Blister Creek 17 acres  
IR 20240816 @ 2024 PDT Hrs

Whisky Creek 1,973 acres  
IR 20240816 @ 2353 PDT Hrs



**Branch III**  
BLISTER CREEK  
SANDSTONE  
DD



1:100,000 | NW Team 10 | 8/17/2024 0646  
Acres from IR Acres from IR  
North American 1983 Datum, Lat/Long Grid



<ul style="list-style-type: none"> <li>Aerial Hazard</li> <li>Helispot</li> <li>Division Break</li> <li>Drop Point</li> <li>Closure</li> <li>Camp</li> <li>Staging Area</li> <li>Lookout</li> <li>Hot Spot - Spot Fire</li> <li>Fire Origin</li> <li>Value at Risk</li> <li>Other</li> <li>Stream Crossing</li> </ul>	<ul style="list-style-type: none"> <li>Road Repair</li> <li>Resource Location</li> <li>Repair Point</li> <li>Landing or Log Deck</li> <li>Dozer Fuel</li> <li>Mobile Weather Unit</li> <li>Repeater</li> <li>Hot Spot - Spot Fire</li> <li>Draft Site</li> <li>Completed Dozer Line</li> <li>Completed Hand Line</li> <li>Completed Mixed Construction Line</li> <li>Completed Road as Line</li> </ul>	<ul style="list-style-type: none"> <li>Planned Dozer Line</li> <li>Planned Hand Line</li> <li>Planned Road as Line</li> <li>Proposed Line</li> <li>Access Route</li> <li>Management Action Point</li> <li>Other</li> <li>Repair Line</li> <li>Aerial Hazard</li> <li>Temporary Flight Restriction</li> <li>Contained</li> <li>Uncontained</li> <li>Wildfire Daily Fire Perimeter</li> <li>Primary Highway</li> </ul>	<ul style="list-style-type: none"> <li>Secondary Highway</li> <li>Road</li> <li>Road, Paved</li> <li>Road, Dirt/Gravel</li> <li>Road, High Clearance</li> <li>FS Closed Road</li> <li>USFS Roadless Areas</li> <li>Bureau of Land Management Wilderness</li> <li>Forest Service Land</li> <li>Bureau of Land Management Lands</li> <li>State Lands</li> <li>U.S. Fish Wildlife Service Lands</li> <li>Wildfire Daily Fire Perimeter</li> <li>Fire Perimeter History Since 2004</li> <li>Other Property</li> </ul>	<ul style="list-style-type: none"> <li>Pump</li> <li>Water Tank</li> <li>Airstrip or Airport</li> <li>Helispot</li> <li>Sling Site</li> <li>Unimproved Landing Area</li> <li>Division Break</li> <li>Incident Command Post</li> <li>Drop Point</li> <li>Closure</li> <li>Camp</li> <li>Staging Area</li> <li>Lookout</li> <li>Mobile Weather Unit</li> <li>Internet Access</li> </ul>	<ul style="list-style-type: none"> <li>Fire Origin</li> <li>Value at Risk</li> <li>Other</li> <li>Gate</li> <li>Sling Site</li> <li>Structure Wrap</li> <li>Division Break</li> <li>Resource Location</li> <li>Repair Point</li> <li>Landing or Log Deck</li> <li>Dozer Push</li> <li>Culvert</li> <li>Mobile Weather Unit</li> <li>Internet Access</li> </ul>	<ul style="list-style-type: none"> <li>Repeater</li> <li>Dip Site</li> <li>Restricted Water Source</li> <li>IR Isolated Heat Source</li> <li>Possible IR Heat Source</li> <li>Completed Burnout</li> <li>Completed Dozer Line</li> <li>Completed Fuel Break</li> <li>Completed Hand Line</li> <li>Planned Dozer Line</li> <li>Planned Mixed Construction Line</li> <li>Planned Road as Line</li> </ul>	<ul style="list-style-type: none"> <li>Proposed Line</li> <li>Access Route</li> <li>Temporary Flight Restriction</li> <li>Contained</li> <li>Uncontained</li> <li>Wildfire Daily Fire Perimeter</li> <li>ICP to Kingsley Spike Camp</li> <li>ICP to Sandstone Basecamp</li> </ul>
---	--	--	---	---	--	--	---