



Air Operations

Sandstone
 OR-MHF-000818
 696 acres
 Blister Creek
 OR-MHF-000808
 17 acres
 08/17/2024 Day
 Acres updated
 20240814 @ 2024 PDT

FC Point Type	Label	Longitude WGS84 DDM	Latitude WGS84 DDM	Elevation (Feet)
Camp	Sandstone	122° 02.628' W	45° 04.984' N	
Camp	Job Corp	122° 03.598' W	45° 05.547' N	
Dip Site		122° 04.272' W	45° 01.276' N	
Drop Point	110	122° 08.881' W	44° 58.104' N	
Drop Point	112	122° 09.250' W	44° 58.122' N	
Drop Point	114	122° 09.576' W	44° 58.242' N	
Drop Point	105	122° 07.308' W	44° 58.174' N	
Drop Point	120	122° 11.360' W	44° 58.015' N	
Drop Point	130	122° 12.129' W	44° 59.127' N	
Drop Point	140	122° 09.324' W	44° 59.336' N	
Drop Point	145	122° 07.637' W	44° 59.883' N	
Drop Point	102	122° 03.879' W	44° 59.547' N	
Drop Point	125	122° 10.953' W	44° 58.752' N	
Drop Point	147	122° 09.641' W	44° 59.093' N	
Helispot	180	122° 03.211' W	45° 04.936' N	
Helispot	185	122° 09.193' W	44° 58.168' N	2500
Helispot	195	122° 11.651' W	44° 59.853' N	
Helispot	197	122° 11.161' W	44° 59.558' N	
Mobile Weather Unit		122° 12.033' W	44° 59.061' N	4300
Repeater	CMD 6	122° 07.177' W	45° 06.391' N	

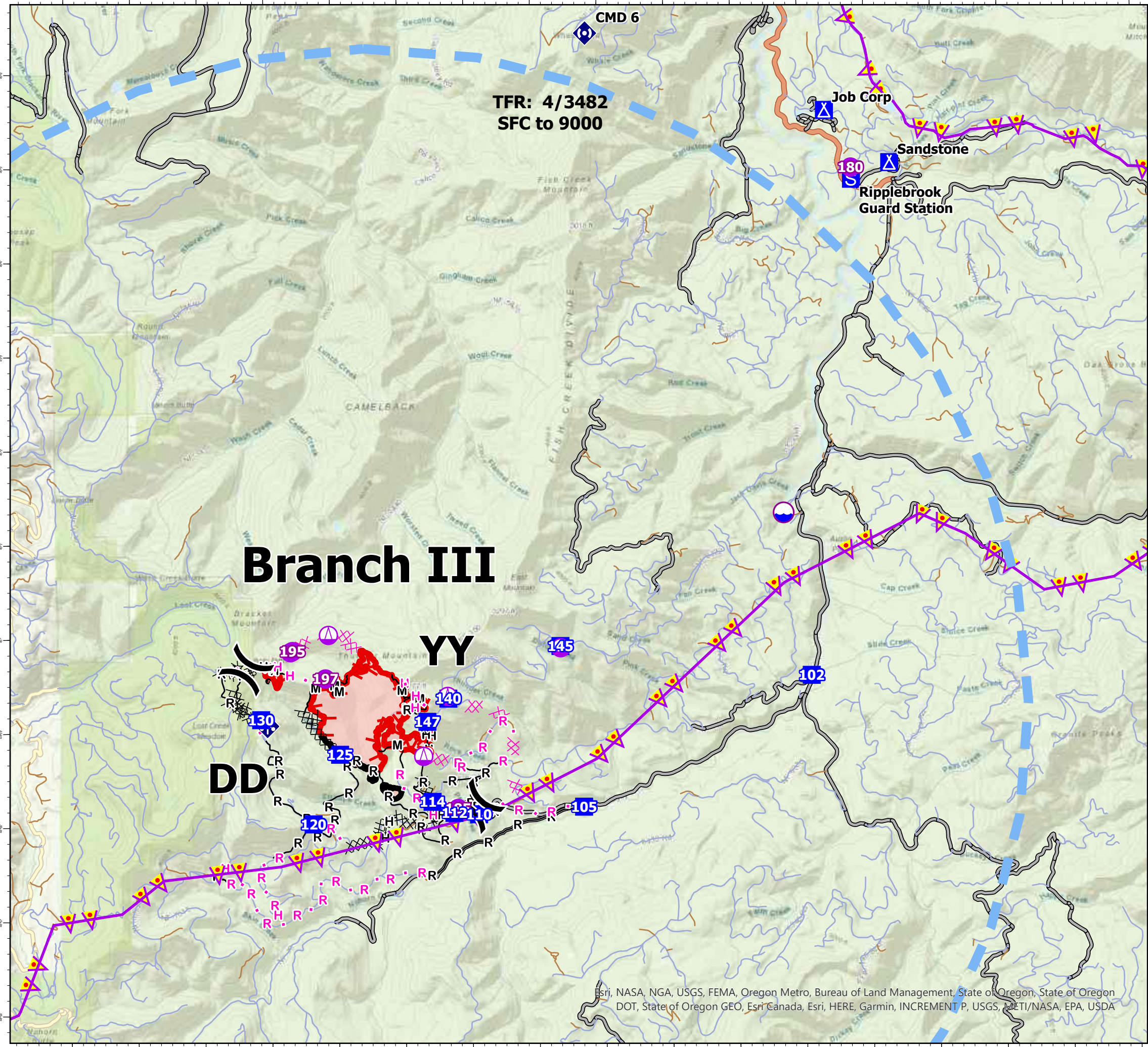
- Mainline Rd
- Drop Point
- Completed Mixed Construction Line
- Camp
- Staging Area
- Hot Spot - Spot Fire
- Mobile Weather Unit
- Repeater
- Dip Site
- Completed Dozer Line
- Completed Hand Line
- Completed Road as Line
- Planned Dozer Line
- Planned Hand Line
- Planned Road as Line
- Aerial Hazard
- Temporary Flight Restriction
- Contained
- Uncontained
- Wildfire Daily Fire Perimeter
- Division Break

Incident Frequencies

Name	AM_FM	RX	RX_Tone	TX	TX_Tone
A/A Primary	TFR-AM	120.1500		120.1500	
A/A (Rotor)	AM	128.6750		128.6750	
A/G Primary	FM	167.1750		167.1750	
A/G Secondary	FM	171.9000		171.9000	



8/14/2024, 2106 hrs
 Acres from IR Acres from IR
 North American 1983 Datum. LatLong Grid



Esri, NASA, NGA, USGS, FEMA, Oregon Metro, Bureau of Land Management, State of Oregon, State of Oregon DOT, State of Oregon GEO, Esri Canada, Esri, HERE, Garmin, INCREMENT P, USGS, METI/NASA, EPA, USDA