

# Air Operations

Sandstone

OR-MHF-000818

08/19/2024 Day

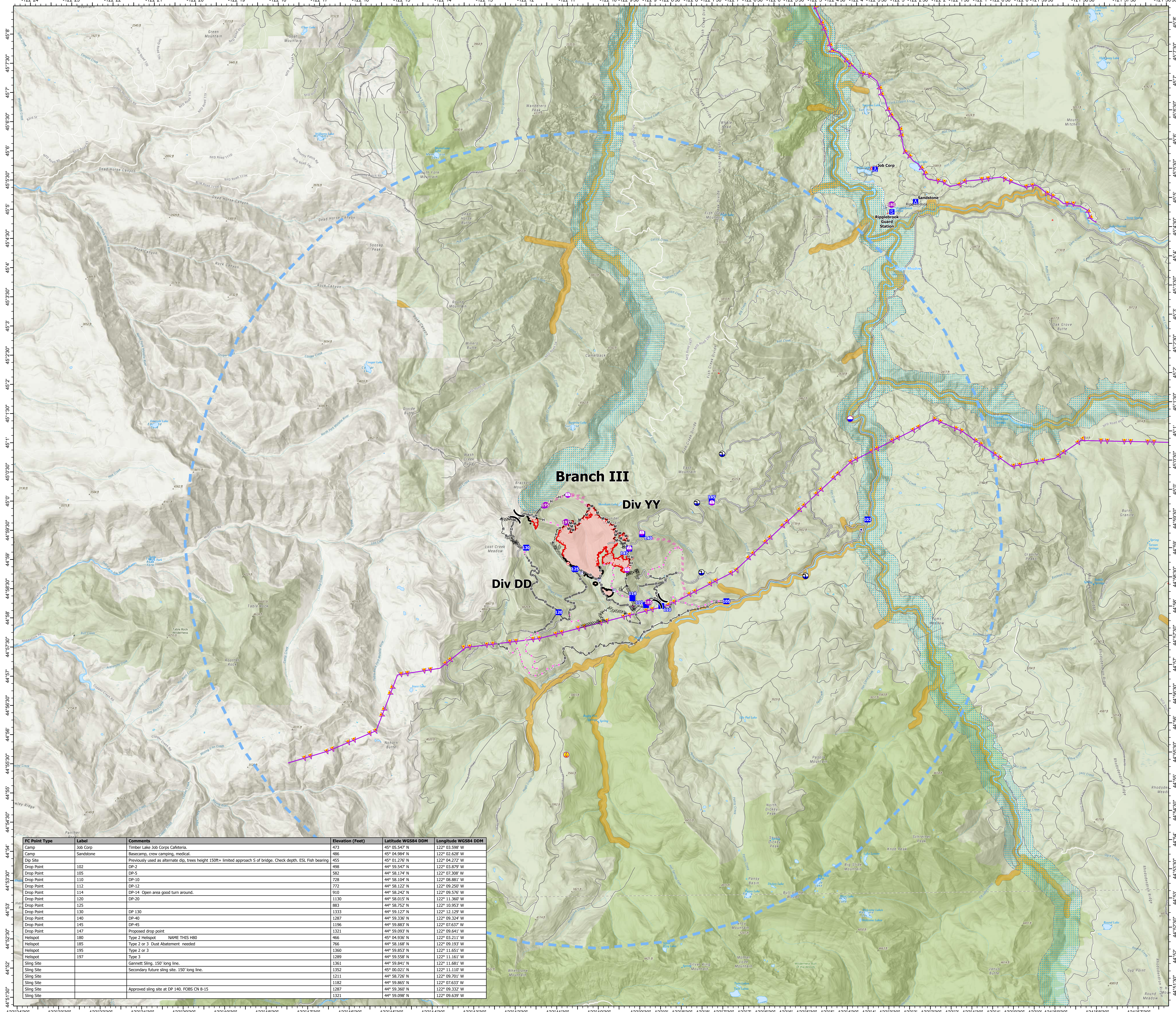
Sandstone 702 acres

Blister Creek 17 acres

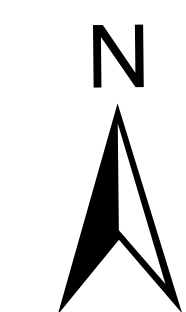
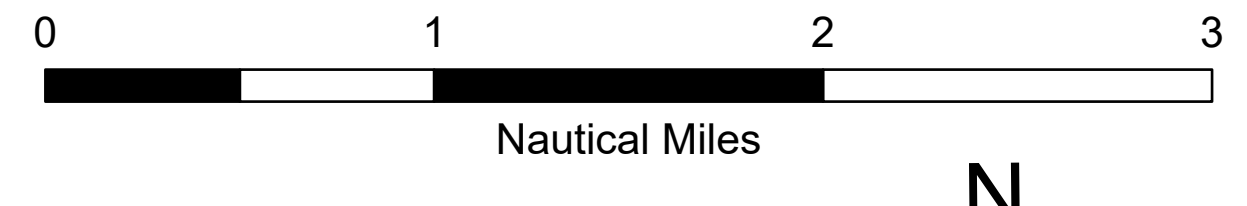
From IR 20240817 @ 2103 PDT



- Other Property
- Pump
- Water Tank
- Aerial Hazard
- Helispot
- Sling Site
- Division Break
- Drop Point
- Camp
- Staging Area
- Hot Spot - Spot Fire
- Dip Site
- Draft Site
- Completed Dozer Line
- Completed Hand Line
- Completed Mixed Construction Line
- Completed Road as Line
- Planned Dozer Line
- Planned Hand Line
- Planned Road as Line
- Access Route
- Aerial Hazard
- Temporary Flight Restriction
- Contained
- Uncontained
- Wildfire Daily Fire Perimeter
- Fire Retardant Avoidance
- Roads
- Wild and Scenic River



FC Point Type	Label	Comments	Elevation (Feet)	Latitude WGS84 DDM	Longitude WGS84 DDM
Camp	Job Corp	Timber Lake Job Corps Cafeteria.	473	45° 05.547' N	122° 03.598' W
Camp	Sandstone	Basecamp, crew camping, medical.	486	45° 04.984' N	122° 02.628' W
Dip Site		Previously used as alternate dip, trees height 150ft+ limited approach S of bridge. Check depth. ESL. Fish bearing	455	45° 01.276' N	122° 04.272' W
Drop Point	DP-2		498	44° 59.547' N	122° 03.879' W
Drop Point	DP-5		502	44° 58.174' N	122° 07.308' W
Drop Point	DP-10		728	44° 58.104' N	122° 08.881' W
Drop Point	DP-12		772	44° 58.122' N	122° 09.250' W
Drop Point	DP-14	Open area good turn around.	910	44° 58.242' N	122° 09.576' W
Drop Point	DP-20		1130	44° 58.015' N	122° 11.360' W
Drop Point	DP-25		883	44° 58.752' N	122° 10.953' W
Drop Point	DP-30		1333	44° 59.127' N	122° 12.209' W
Drop Point	DP-40		1287	44° 59.336' N	122° 09.324' W
Drop Point	DP-45		1196	44° 59.883' N	122° 07.637' W
Drop Point	DP-47	Proposed drop point	1321	44° 59.093' N	122° 09.641' W
Helispot	180	Type 2 Helispot NAME THIS H8D	466	45° 04.936' N	122° 03.211' W
Helispot	185	Type 2 or 3 Dust Abatement needed	766	44° 58.168' N	122° 09.193' W
Helispot	195	Type 2 or 3	1360	44° 59.853' N	122° 11.651' W
Helispot	197	Type 3	1289	44° 59.558' N	122° 11.161' W
Sling Site		Gannett Sling, 150' long line.	1361	44° 59.841' N	122° 11.681' W
Sling Site		Secondary future sling site, 150' long line.	1352	45° 00.021' N	122° 11.110' W
Sling Site			1211	44° 58.726' N	122° 09.701' W
Sling Site			1182	44° 59.865' N	122° 07.633' W
Sling Site			1287	44° 59.865' N	122° 09.322' W
Sling Site		Approved sling site at DP 140. FOBS CN 8-15	1321	44° 59.098' N	122° 09.639' W



1:36,000 NW MT 10 | 8/18/2024 2048  
 Acres from IR Acres from IR  
 North American 1983 Datum, Lat-Long Grid