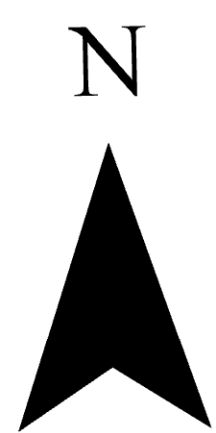




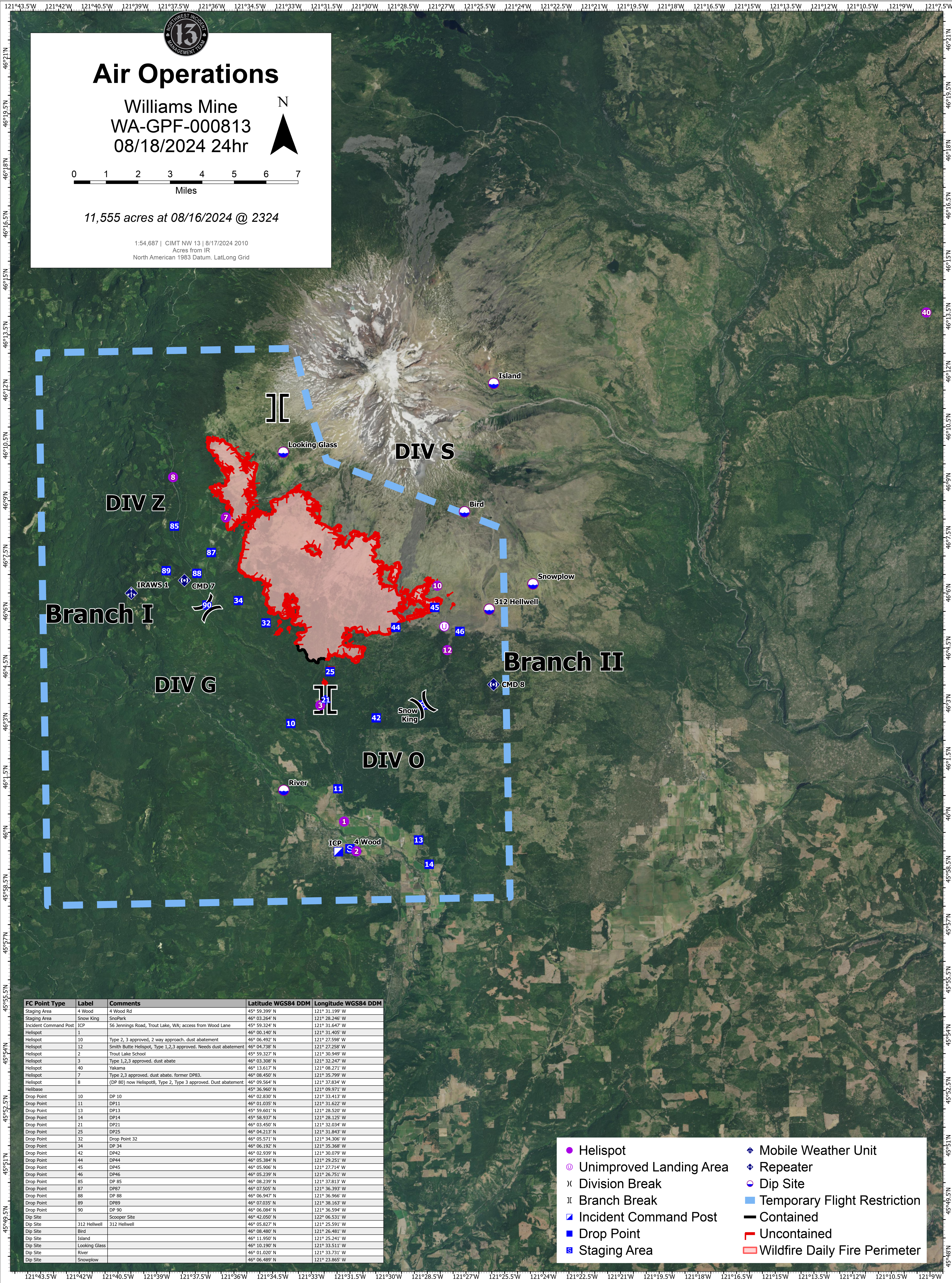
Air Operations

Williams Mine
WA-GPF-000813
08/18/2024 24hr



11,555 acres at 08/16/2024 @ 2324

1:54,687 | CIMT NW 13 | 8/17/2024 2010
Acres from IR
North American 1983 Datum, LatLong Grid



FC Point Type	Label	Comments	Latitude WGS84 DDM	Longitude WGS84 DDM
Staging Area	4 Wood	4 Wood Rd	45° 59.399' N	121° 31.199' W
Staging Area	Snow King	SnoPark	46° 03.264' N	121° 28.246' W
Incident Command Post	ICP	56 Jennings Road, Trout Lake, WA; access from Wood Lane	45° 59.324' N	121° 31.647' W
Helispot	1		46° 00.140' N	121° 31.405' W
Helispot	10	Type 2, 3 approved, 2 way approach, dust abatement	46° 06.492' N	121° 27.598' W
Helispot	12	Smith Butte Helispot, Type 1,2,3 approved. Needs dust abatement	46° 04.738' N	121° 27.258' W
Helispot	2	Trout Lake School	45° 59.327' N	121° 30.949' W
Helispot	3	Type 1,2,3 approved, dust abate	46° 03.308' N	121° 32.247' W
Helispot	40	Yakama	46° 13.617' N	121° 08.271' W
Helispot	7	Type 2,3 approved, dust abate, former DP83.	46° 08.450' N	121° 35.799' W
Helispot	8	(DP 80) now Helispot8, Type 2, Type 3 approved. Dust abatement	46° 09.564' N	121° 37.834' W
Helibase			45° 36.960' N	121° 09.971' W
Drop Point	10	DP 10	46° 02.830' N	121° 33.413' W
Drop Point	11	DP11	46° 01.035' N	121° 31.622' W
Drop Point	13	DP13	45° 59.601' N	121° 28.520' W
Drop Point	14	DP14	45° 58.937' N	121° 28.125' W
Drop Point	21	DP21	46° 03.450' N	121° 32.034' W
Drop Point	25	DP25	46° 04.213' N	121° 31.843' W
Drop Point	32	Drop Point 32	46° 05.571' N	121° 34.306' W
Drop Point	34	DP 34	46° 06.192' N	121° 35.368' W
Drop Point	42	DP42	46° 02.939' N	121° 30.079' W
Drop Point	44	DP44	46° 05.384' N	121° 29.251' W
Drop Point	45	DP45	46° 05.906' N	121° 27.714' W
Drop Point	46	DP46	46° 05.239' N	121° 26.751' W
Drop Point	85	DP 85	46° 08.239' N	121° 37.813' W
Drop Point	87	DP87	46° 07.505' N	121° 36.393' W
Drop Point	88	DP 88	46° 06.947' N	121° 36.966' W
Drop Point	89	DP89	46° 07.035' N	121° 38.163' W
Drop Point	90	DP 90	46° 06.084' N	121° 36.594' W
Dip Site		Scooper Site	46° 04.050' N	122° 06.531' W
Dip Site	312 Hellwell	312 Hellwell	46° 05.827' N	121° 25.591' W
Dip Site	Bird		46° 08.480' N	121° 26.481' W
Dip Site	Island		46° 11.950' N	121° 25.241' W
Dip Site	Looking Glass		46° 10.190' N	121° 33.511' W
Dip Site	River		46° 01.020' N	121° 33.731' W
Dip Site	Snowplow		46° 06.489' N	121° 23.865' W

- Helispot
- Unimproved Landing Area
- ⌘ Division Break
- ⌚ Branch Break
- ⚡ Incident Command Post
- Drop Point
- Ⓜ Staging Area
- ⚡ Mobile Weather Unit
- ⚡ Repeater
- Ⓜ Dip Site
- ⌚ Temporary Flight Restriction
- Contained
- Uncontained
- Wildfire Daily Fire Perimeter