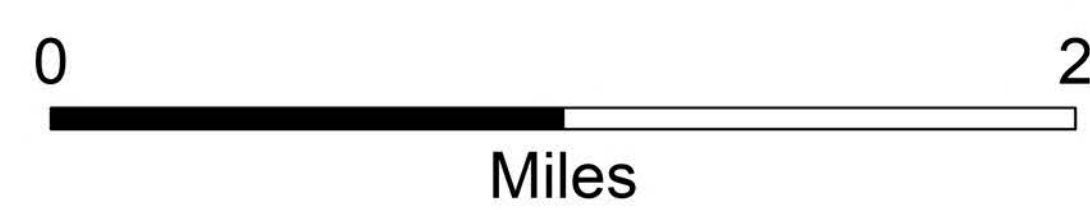
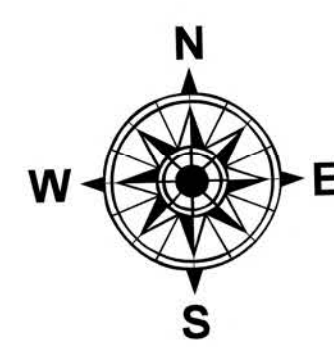
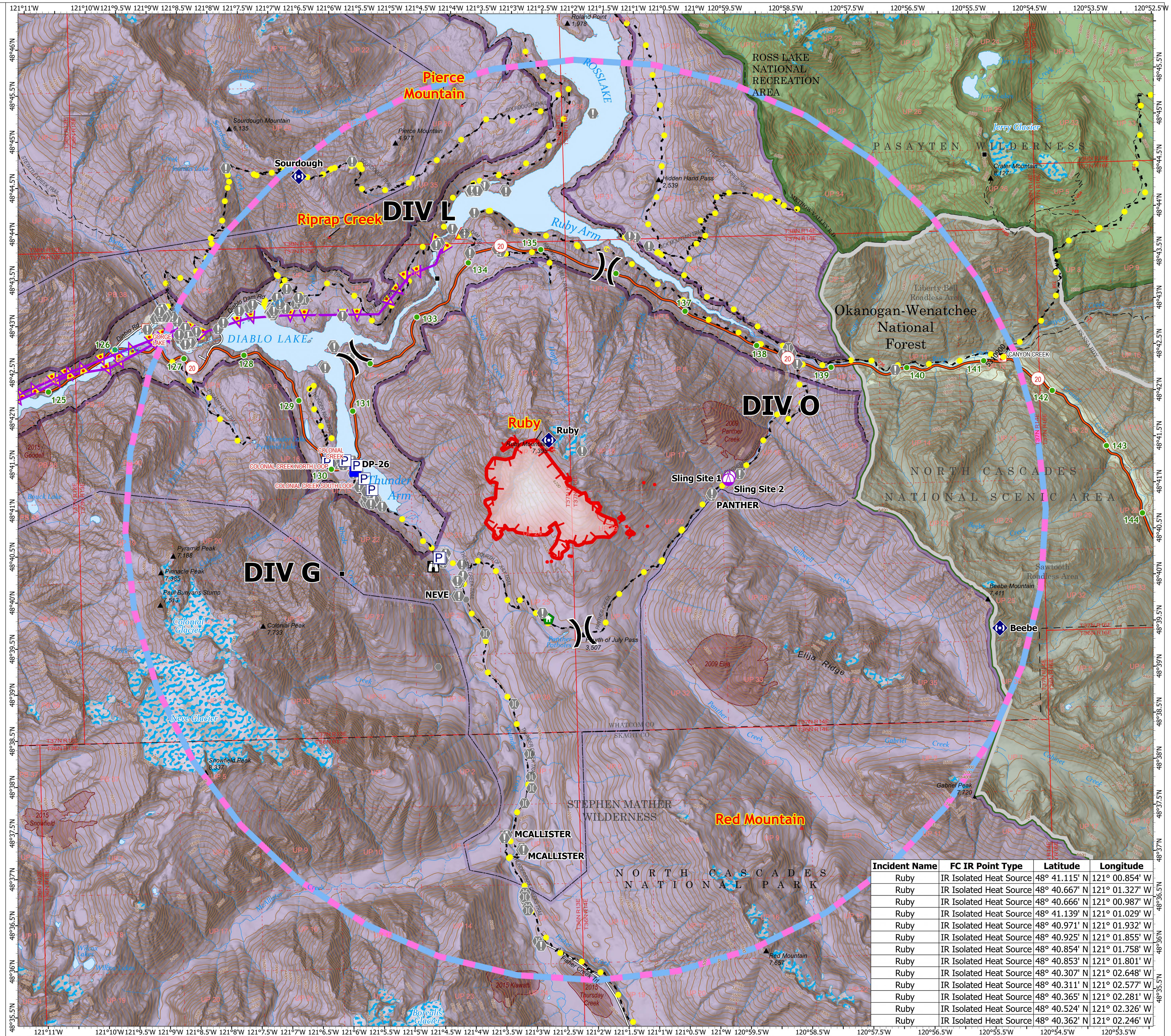


Operations

Ruby
WA-NCP-000285
8/19/2024 day

820 acres at 08/17/2024 0200 hrs PT

- Uncontained
- Wildfire Daily Fire Perimeter
- IR Scattered Heat
- Structure
- P Pump
- IR Isolated Heat Source
- Sling Site
-) Division Break
- Drop Point
- Ⓜ Lookout
- ⚠ Value at Risk
- Other
- Bridge
- Structure Wrap
- Repeater
- ⚠ Hazard
- Highlighted Feature
- Aerial Hazard
- Temporary Flight Restriction
- Mile Markers
- Secondary Highway
- Road
- USFS Roadless Areas
- National Park Service Wilderness
- FS Wilderness Boundary
- Other Designated Boundary
- Forest Service Land
- National Park Service Lands
- Interagency Fire Perimeter History Since 2004
- Interagency Fuels Treatments



Incident Name	FC IR Point Type	Latitude	Longitude
Ruby	IR Isolated Heat Source	48° 41.115' N	121° 00.854' W
Ruby	IR Isolated Heat Source	48° 40.667' N	121° 01.327' W
Ruby	IR Isolated Heat Source	48° 40.666' N	121° 00.987' W
Ruby	IR Isolated Heat Source	48° 41.139' N	121° 01.029' W
Ruby	IR Isolated Heat Source	48° 40.971' N	121° 01.932' W
Ruby	IR Isolated Heat Source	48° 40.925' N	121° 01.855' W
Ruby	IR Isolated Heat Source	48° 40.854' N	121° 01.758' W
Ruby	IR Isolated Heat Source	48° 40.853' N	121° 01.801' W
Ruby	IR Isolated Heat Source	48° 40.307' N	121° 02.648' W
Ruby	IR Isolated Heat Source	48° 40.311' N	121° 02.577' W
Ruby	IR Isolated Heat Source	48° 40.365' N	121° 02.281' W
Ruby	IR Isolated Heat Source	48° 40.524' N	121° 02.326' W
Ruby	IR Isolated Heat Source	48° 40.362' N	121° 02.246' W