

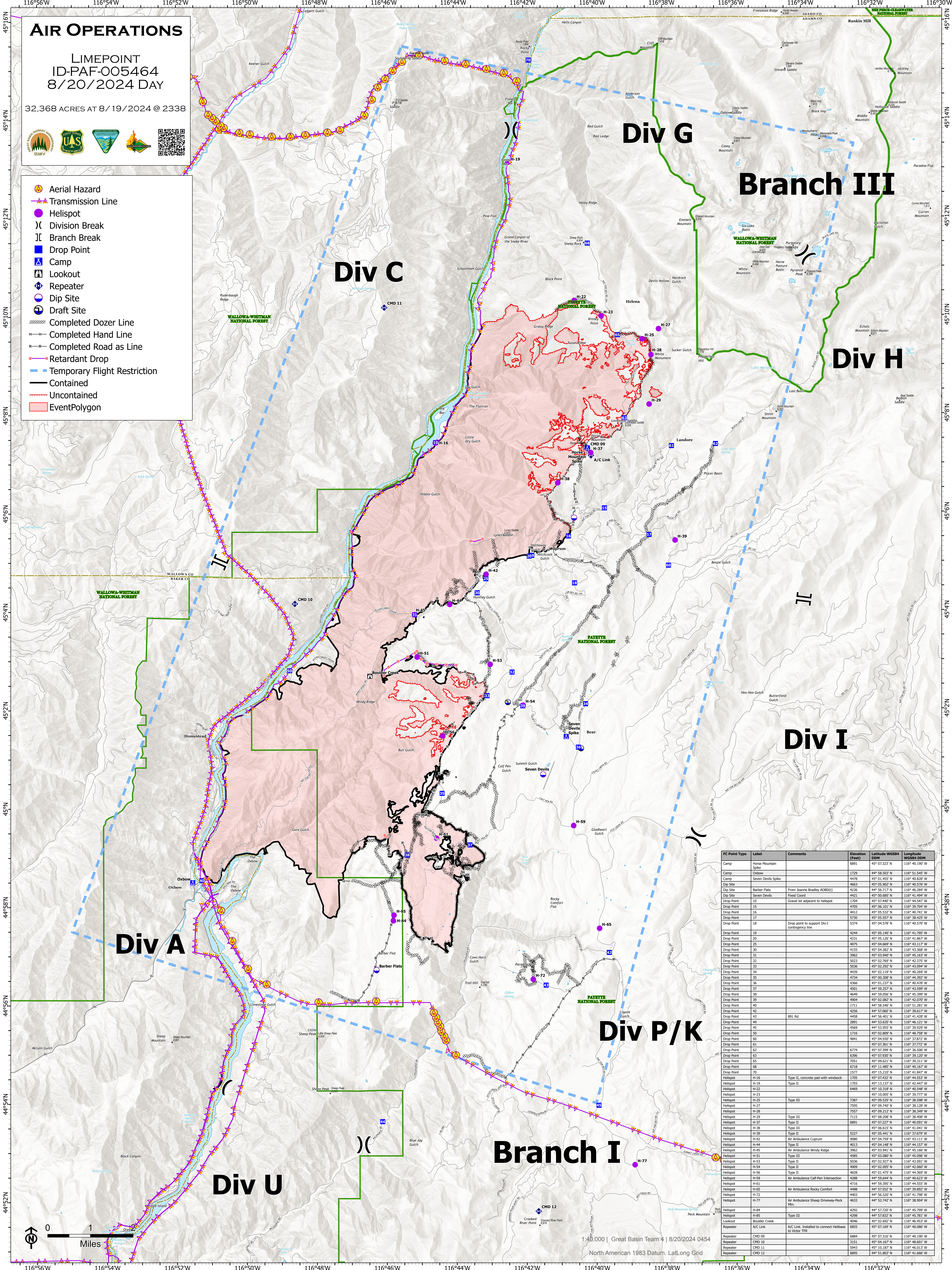
AIR OPERATIONS

LIMEPOINT
ID-PAF-005464
8/20/2024 DAY

32,368 ACRES AT 8/19/2024 @ 2338



- Aerial Hazard
- Transmission Line
- Helispot
- Division Break
- Branch Break
- Drop Point
- Camp
- Lookout
- Repeater
- Dip Site
- Draft Site
- Completed Dozer Line
- Completed Hand Line
- Completed Road as Line
- Retardant Drop
- Temporary Flight Restriction
- Contained
- Uncontained
- EventPolygon



FC Point Type	Label	Comments	Elevation (Feet)	Latitude WGS84	Longitude WGS84
Camp	Horse Mountain Spike		6891	45° 07.323' N	116° 40.190' W
Camp	Oxbow		3720	44° 58.503' N	116° 51.540' W
Camp	Seven Devils Spike		4478	45° 01.455' N	116° 40.828' W
Dip Site	Barber Flats	From Jeanne Bradley ACBD(1)	4236	45° 05.902' N	116° 40.576' W
Dip Site	Seven Devils	Fixed Coord	4421	45° 00.685' N	116° 41.494' W
Drop Point	10	Gravel lot adjacent to helispot	1704	45° 02.065' N	116° 44.517' W
Drop Point	15		4705	45° 06.101' N	116° 39.704' W
Drop Point	16		4412	45° 05.532' N	116° 40.741' W
Drop Point	17		5730	45° 05.557' N	116° 38.425' W
Drop Point	18	Drop point to support Div-I contingency line	5374	45° 04.578' N	116° 40.570' W
Drop Point	19		4244	45° 05.140' N	116° 41.795' W
Drop Point	20		4231	45° 05.126' N	116° 41.267' W
Drop Point	25		4925	45° 04.669' N	116° 43.117' W
Drop Point	30		4155	45° 04.382' N	116° 43.368' W
Drop Point	31		3962	45° 03.940' N	116° 45.163' W
Drop Point	32		5023	45° 02.769' N	116° 42.375' W
Drop Point	33		5036	45° 02.592' N	116° 43.094' W
Drop Point	34		4439	45° 02.119' N	116° 40.269' W
Drop Point	35		4734	45° 00.308' N	116° 44.392' W
Drop Point	36		4366	45° 01.237' N	116° 40.478' W
Drop Point	37		4501	44° 59.257' N	116° 43.599' W
Drop Point	38		4649	44° 59.055' N	116° 43.540' W
Drop Point	39		4904	45° 02.082' N	116° 42.070' W
Drop Point	40		1711	44° 58.546' N	116° 51.281' W
Drop Point	42		4256	44° 57.067' N	116° 39.617' W
Drop Point	43		4458	44° 56.401' N	116° 40.167' W
Drop Point	44	091 rd	2891	44° 53.635' N	116° 46.121' W
Drop Point	45		4569	44° 53.955' N	116° 39.929' W
Drop Point	50		1716	45° 02.809' N	116° 48.758' W
Drop Point	60		4841	45° 04.520' N	116° 37.972' W
Drop Point	61		4574	45° 07.361' N	116° 37.772' W
Drop Point	62		6774	45° 07.399' N	116° 36.506' W
Drop Point	63		6396	45° 07.930' N	116° 39.120' W
Drop Point	65		7051	45° 09.621' N	116° 39.211' W
Drop Point	68		6718	45° 11.485' N	116° 40.167' W
Drop Point	70		1577	45° 15.210' N	116° 41.847' W
Helispot	H-16	Type II, concrete pad with windsock	1705	45° 07.432' N	116° 44.553' W
Helispot	H-19	Type II	1703	45° 13.137' N	116° 42.447' W
Helispot	H-22		4669	45° 10.318' N	116° 40.540' W
Helispot	H-23		4574	45° 10.005' N	116° 39.777' W
Helispot	H-25	Type III	7387	45° 09.535' N	116° 38.598' W
Helispot	H-27		7925	45° 09.740' N	116° 38.128' W
Helispot	H-28		7557	45° 09.212' N	116° 38.349' W
Helispot	H-29	Type III	7115	45° 08.208' N	116° 38.608' W
Helispot	H-37	Type II	6891	45° 07.227' N	116° 40.091' W
Helispot	H-38	Type III	4574	45° 06.615' N	116° 41.041' W
Helispot	H-39	Type II	5227	45° 05.441' N	116° 37.679' W
Helispot	H-43	Air Ambulance Capurn	4080	45° 04.759' N	116° 43.111' W
Helispot	H-44	Type II	4013	45° 04.148' N	116° 44.157' W
Helispot	H-45	Air Ambulance Windy Ridge	3962	45° 03.941' N	116° 45.166' W
Helispot	H-51	Type III	4585	45° 03.080' N	116° 45.096' W
Helispot	H-53	Type II	5238	45° 02.927' N	116° 43.021' W
Helispot	H-54	Type II	4909	45° 02.095' N	116° 42.660' W
Helispot	H-56	Type II	4828	45° 01.475' N	116° 44.369' W
Helispot	H-59	Air Ambulance Calf Pen Intersection	4288	44° 59.644' N	116° 40.623' W
Helispot	H-61		4716	44° 59.395' N	116° 44.255' W
Helispot	H-65	Air Ambulance Rocky Comfort	4468	44° 57.552' N	116° 39.802' W
Helispot	H-72		4403	44° 56.507' N	116° 41.798' W
Helispot	H-77	Air Ambulance Sheep Driveway-Peck Mtn.	4633	44° 52.742' N	116° 38.904' W
Helispot	H-84		4292	44° 57.720' N	116° 45.799' W
Helispot	H-85	Type III	4298	44° 57.832' N	116° 45.781' W
Lookout	Boulder Creek		4046	45° 02.692' N	116° 46.453' W
Repeater	A/C Link	A/C Link. Installed to connect Helibase to Motor FTR.	6855	45° 07.169' N	116° 40.086' W
Repeater	CMD 09		6884	45° 07.316' N	116° 40.190' W
Repeater	CMD 11		3151	45° 04.167' N	116° 48.601' W
Repeater	CMD 12		5943	45° 10.187' N	116° 40.513' W
Repeater			6895	44° 51.887' N	116° 41.668' W

