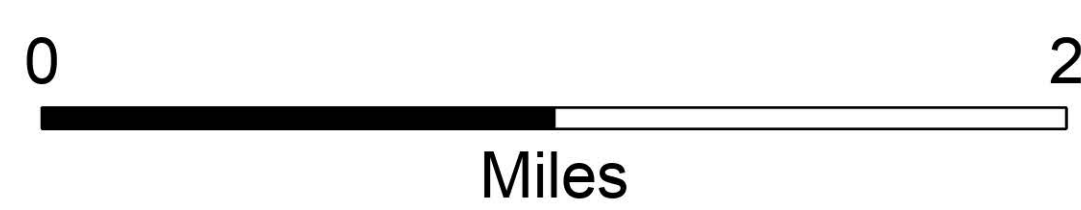
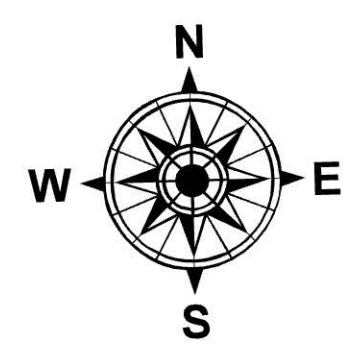
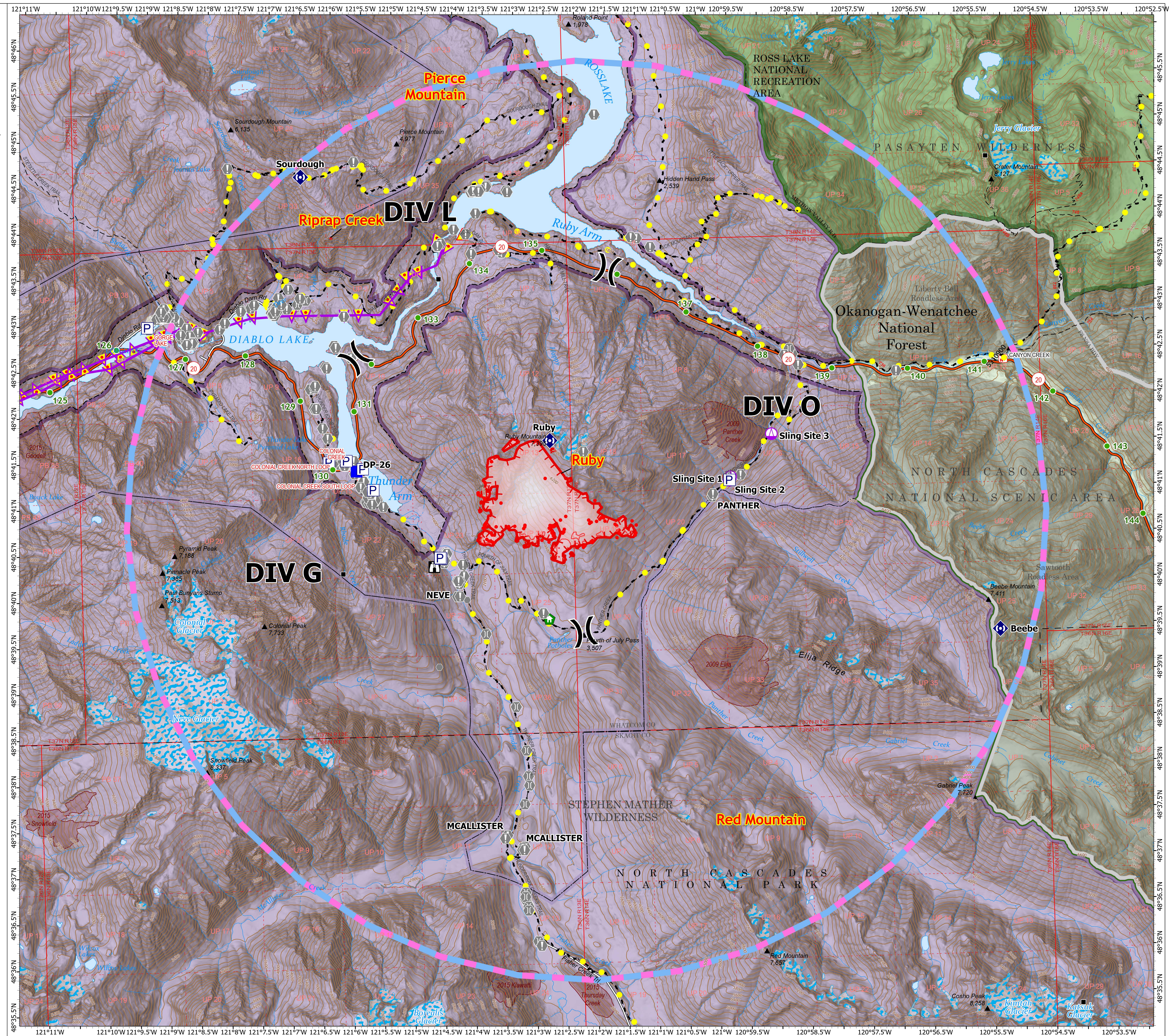


# Operations

Ruby  
WA-NCP-000285  
8/22/2024 day

921 acres at 08/21/2024 0215 hrs PT

- Uncontained
- Wildfire Daily Fire Perimeter
- IR Scattered Heat
- IR Isolated Heat Source
- Structure
- Pump
- Sling Site
- Division Break
- Drop Point
- Lookout
- Value at Risk
- Other
- Bridge
- Structure Wrap
- Repeater
- Hazard
- Highlighted Feature
- Aerial Hazard
- Temporary Flight Restriction
- Mile Markers
- Secondary Highway
- Road
- USFS Roadless Areas
- National Park Service Wilderness
- FS Wilderness Boundary
- Other Designated Boundary
- Forest Service Land
- National Park Service Lands
- Interagency Fire Perimeter History Since 2004
- Interagency Fuels Treatments



1:23,753 | RIST 2024 | 8/21/2024 2037  
Acres from IR  
North American 1983 Datum, LatLong Grid