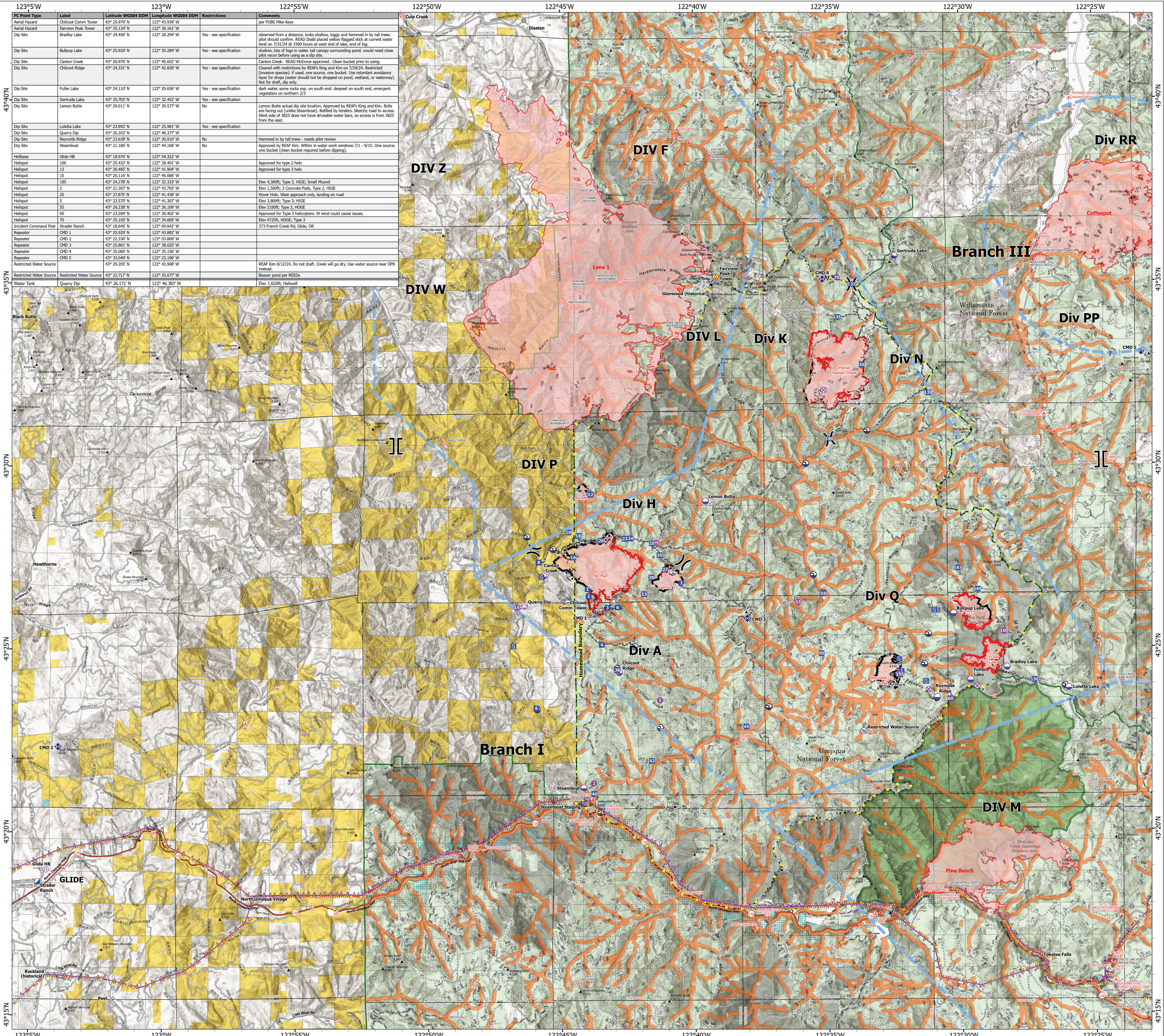


Airops

Homestead Complex
OR-UPF-240311
8/23/2024

5894 acres at 08/21/2024 2206 PDT

- Heliwell
- Aerial Hazard
- Helispot
- Helibase
- UAS Launch and Recovery
- Division Break
- Branch Break
- Incident Command Post
- Drop Point
- Camp
- Staging Area
- Other
- Landmark
- Repeater
- Dip Site
- Draft Site
- Restricted Water Source
- Completed Burnout
- Completed Dozer Line
- Completed Fuel Break
- Completed Hand Line
- Completed Mixed Construction Line
- Completed Road as Line
- Access Route
- Homestead Boundary
- Temporary Flight Restriction
- Contained
- Uncontained
- Electric Power Transmission Lines
- Retardant Avoidance Areas
- USFS Roadless Areas
- Forest Service Land
- Bureau of Land Management Lands
- State Lands



FC Point Type	Label	Latitude WGS84 DDM	Longitude WGS84 DDM	Restrictions	Comments
Aerial Hazard	Chicoct Comm Tower	43° 25.979' N	122° 43.939' W		per FOPS Mike Keys
Aerial Hazard	Fairview Peak Tower	43° 35.134' N	122° 39.161' W		
Dip Site	Bradley Lake	43° 24.456' N	122° 28.294' W	Yes - see specification	observed from a distance, looks shallow, loggy and hemmed in by tall trees, pilot should confirm. READ Dodd placed yellow flagged sticks at current water level on 7/31/24 @ 1500 hours at west end of lake, end of log, shallow, lots of logs in water, full canopy surrounding pond, would need close pilot recon before using as a dip site.
Dip Site	Bullpup Lake	43° 25.926' N	122° 30.284' W	Yes - see specification	
Dip Site	Canton Creek	43° 26.976' N	122° 45.652' W		Canton Creek. READ McEnroe approved. Clean bucket prior to using.
Dip Site	Chicoct Ridge	43° 24.331' N	122° 42.628' W	Yes - see specification	Cleared with restrictions by REAF's King and Kim on 7/24/24. Restricted (invasive species); if used, one source, one bucket. Use retardant avoidance layer for drops (water should not be dropped on pond, wetland, or waterway). Not for draft, dip only.
Dip Site	Fuller Lake	43° 24.110' N	122° 29.656' W	Yes - see specification	dark water, some rocks exp. on south end, deepest on south end, emergent vegetation on northern 2/3
Dip Site	Gertrude Lake	43° 35.703' N	122° 32.452' W	Yes - see specification	
Dip Site	Lemon Butte	43° 29.011' N	122° 39.577' W	No	Lemon Butte actual dip site location. Approved by REAF's King and Kim. Bolts are facing out (unlike Steamboat). Refilled by tenders. Sketchy road to access. West side of 3835 does not have drivable water bars, so access is from 3825 from the east.
Dip Site	Loletta Lake	43° 23.892' N	122° 25.081' W	Yes - see specification	
Dip Site	Quarry Dip	43° 26.163' N	122° 46.372' W		
Dip Site	Reynolds Ridge	43° 23.639' N	122° 30.910' W	No	Hemmed in by tall trees - needs pilot review
Dip Site	Steamboat	43° 21.186' N	122° 44.168' W	No	Approved by REAF Kim. Within in water work windows 7/1 - 9/15. One source, one bucket (clean bucket required before dipping).
Helibase	Glide HB	43° 18.976' N	122° 04.322' W		
Helispot	100	43° 25.432' N	122° 28.401' W		Approved for type 2 helo
Helispot	13	43° 26.485' N	122° 41.904' W		Approved for type 3 helo
Helispot	15	43° 26.116' N	122° 46.666' W		
Helispot	195	43° 24.276' N	122° 32.333' W		Elev 4,300ft; Type 3; HIGE; Small Mound
Helispot	2	43° 21.307' N	122° 43.795' W		Elev 1,500ft; Concrete Pads; Type 2; HIGE
Helispot	25	43° 27.875' N	122° 41.436' W		Hover Hole. West approach only, landing on road
Helispot	5	43° 23.570' N	122° 41.307' W		Elev 3,806ft; Type 3; HIGE
Helispot	55	43° 26.238' N	122° 36.109' W		Elev 2160ft; Type 3; HIGE
Helispot	60	43° 23.594' N	122° 39.402' W		Approved for Type 3 Helicopters. W wind could cause issues.
Helispot	70	43° 35.105' N	122° 34.609' W		Elev 4725ft; HIGE; Type 3
Incident Command Post	Strader Ranch	43° 18.646' N	122° 04.642' W		373 French Creek Rd, Glide, OR
Repeater	CMD 1	43° 25.929' N	122° 43.882' W		
Repeater	CMD 2	43° 22.330' N	122° 03.869' W		
Repeater	CMD 3	43° 25.801' N	122° 39.025' W		
Repeater	CMD 4	43° 35.069' N	122° 35.156' W		
Repeater	CMD 5	43° 33.049' N	122° 23.196' W		
Restricted Water Source	Restricted Water Source	43° 22.717' N	122° 33.677' W		BEAVER pond per REEDS
Water Tank	Quarry Dip	43° 26.171' N	122° 46.383' W		Elev 1,620ft, Heliwell

0 0.75 1.5 3 Nautical Miles
0 2 4 8 Kilometers

1:60,000 | NR6 | 8/22/2024 2003
IR Flight
North American 1983 Datum, LatLong Grid