

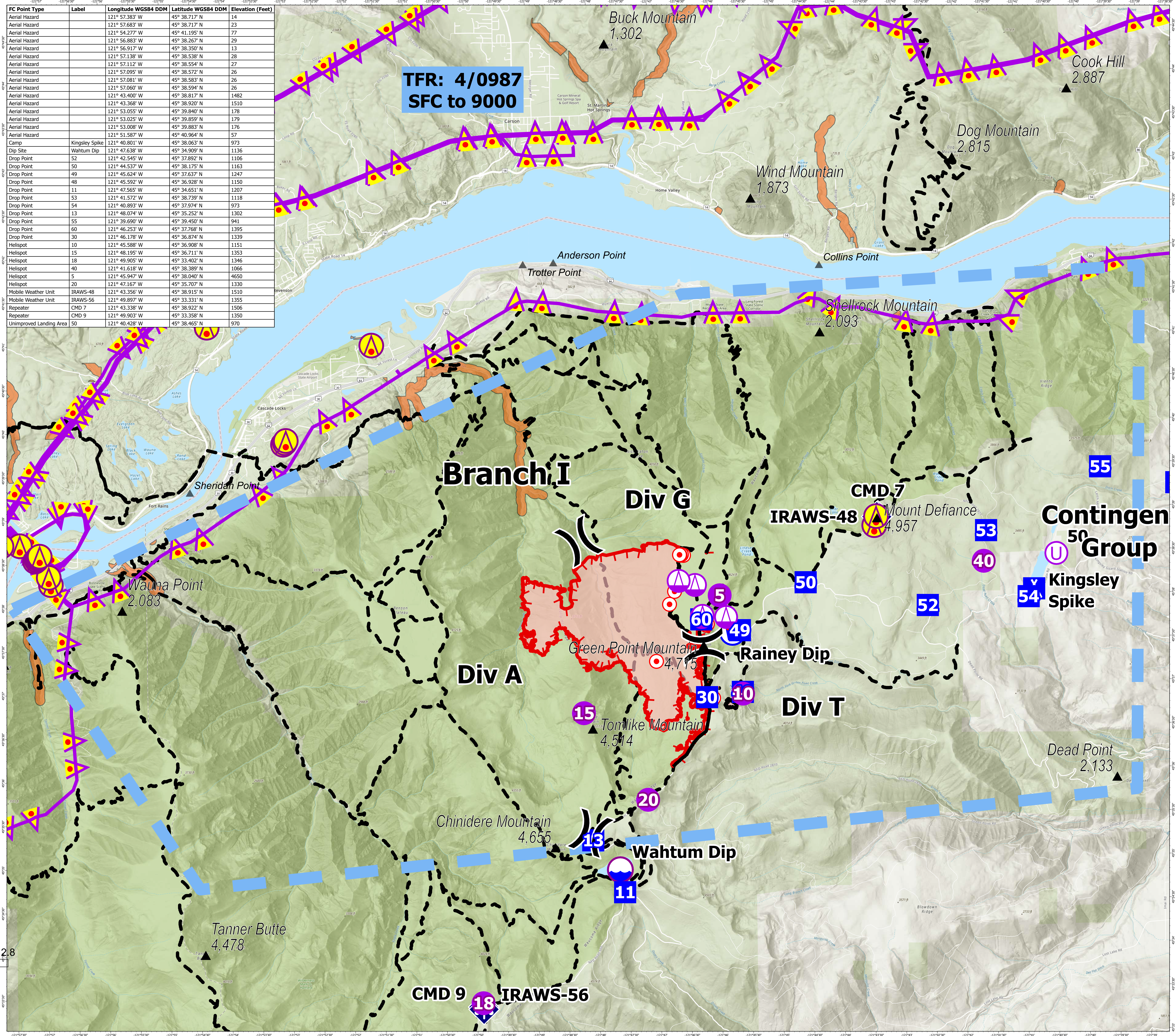
Air Operations

Whisky Creek
 OR-MHF-000639
 08/24/2024 Day
 2067 acres
 at 20240822 @ 0057 PDT



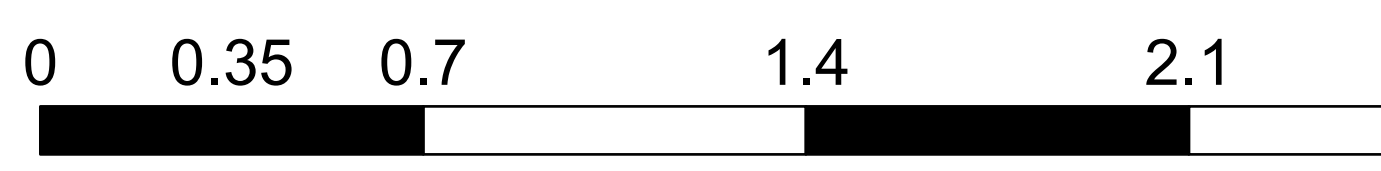
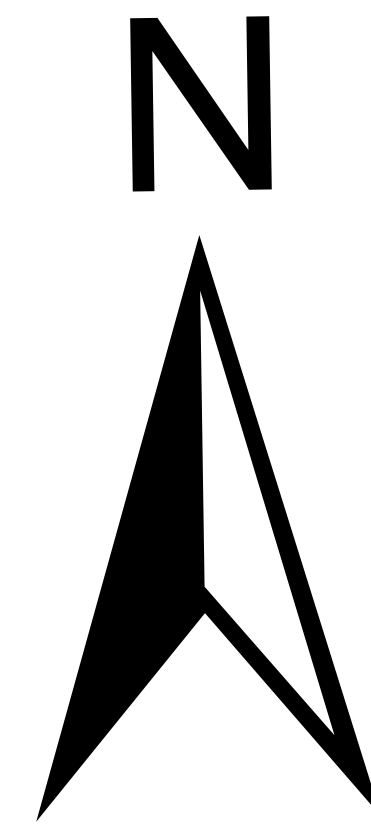
- Aerial Hazard
- Helispot
- Sling Site
- Unimproved Landing Area
- Division Break
- Drop Point
- Camp
- Staging Area
- Hot Spot - Spot Fire
- Mobile Weather Unit
- Repeater
- Dip Site
- Restricted Water Source
- Aerial Hazard
- Temporary Flight Restriction
- Contained
- Uncontained
- Wildfire Daily Fire Perimeter
- Trails_Plus_GTAC
- Fire Retardant Avoidance
- Cape, Peninsula, Bluff, Point
- Gap; Summit

FC Point Type	Label	Longitude WGS84 DDM	Latitude WGS84 DDM	Elevation (Feet)
Aerial Hazard		121° 57.383' W	45° 38.717' N	14
Aerial Hazard		121° 57.683' W	45° 38.717' N	23
Aerial Hazard		121° 54.277' W	45° 41.195' N	77
Aerial Hazard		121° 56.883' W	45° 38.267' N	29
Aerial Hazard		121° 56.917' W	45° 38.350' N	13
Aerial Hazard		121° 57.138' W	45° 38.538' N	28
Aerial Hazard		121° 57.112' W	45° 38.554' N	27
Aerial Hazard		121° 57.095' W	45° 38.572' N	26
Aerial Hazard		121° 57.081' W	45° 38.583' N	26
Aerial Hazard		121° 57.060' W	45° 38.594' N	26
Aerial Hazard		121° 43.400' W	45° 38.817' N	1482
Aerial Hazard		121° 43.368' W	45° 38.920' N	1510
Aerial Hazard		121° 53.055' W	45° 39.840' N	178
Aerial Hazard		121° 53.025' W	45° 39.859' N	179
Aerial Hazard		121° 53.008' W	45° 39.883' N	176
Aerial Hazard		121° 51.587' W	45° 40.964' N	57
Camp	Kingsley Spike	121° 40.801' W	45° 38.063' N	973
Dip Site	Wahtum Dip	121° 47.638' W	45° 34.909' N	1136
Drop Point	52	121° 42.545' W	45° 37.892' N	1106
Drop Point	50	121° 44.537' W	45° 38.175' N	1163
Drop Point	49	121° 45.624' W	45° 37.637' N	1247
Drop Point	48	121° 45.592' W	45° 36.928' N	1150
Drop Point	11	121° 47.665' W	45° 34.651' N	1207
Drop Point	53	121° 41.572' W	45° 36.739' N	1118
Drop Point	54	121° 40.893' W	45° 37.974' N	973
Drop Point	13	121° 48.074' W	45° 35.252' N	1302
Drop Point	55	121° 39.690' W	45° 39.450' N	941
Drop Point	60	121° 46.253' W	45° 37.768' N	1395
Drop Point	30	121° 46.178' W	45° 36.874' N	1339
Helispot	10	121° 45.588' W	45° 36.908' N	1151
Helispot	15	121° 48.195' W	45° 36.711' N	1353
Helispot	18	121° 49.905' W	45° 33.402' N	1346
Helispot	40	121° 41.618' W	45° 38.389' N	1066
Helispot	5	121° 45.947' W	45° 38.040' N	4650
Helispot	20	121° 47.167' W	45° 35.707' N	1330
Mobile Weather Unit	IRAWS-48	121° 43.356' W	45° 38.915' N	1510
Mobile Weather Unit	IRAWS-56	121° 49.897' W	45° 33.331' N	1355
Repeater	CMD 7	121° 43.338' W	45° 39.922' N	1506
Repeater	CMD 9	121° 49.903' W	45° 33.358' N	1350
Unimproved Landing Area	50	121° 40.428' W	45° 38.465' N	970



Incident Frequencies

Name	AM_FM	RX	TX
A/A Primary	TFR-AM	123.6500	123.6500
A/A (Rotor)	AM	118.7750	118.7750
A/G Primary	FM	164.9500	164.9500
A/G Secondary	FM	167.0750	167.0750



Nautical Miles
 1:25,600 | NW Team 10 | 8/23/2024 2024
 Acres from IR
 North American 1983 Datum. LatLong Grid