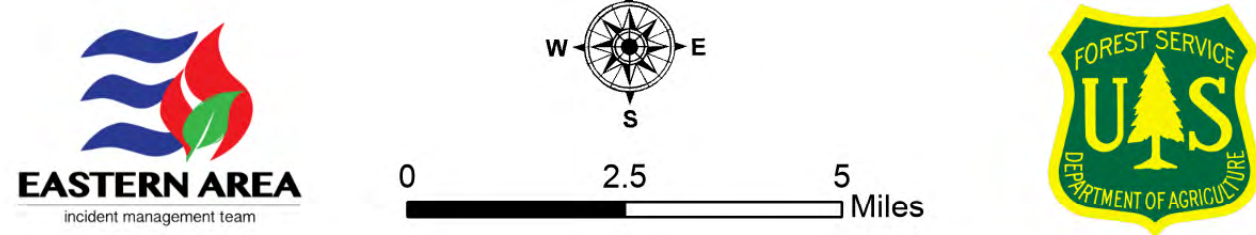


Air Operations

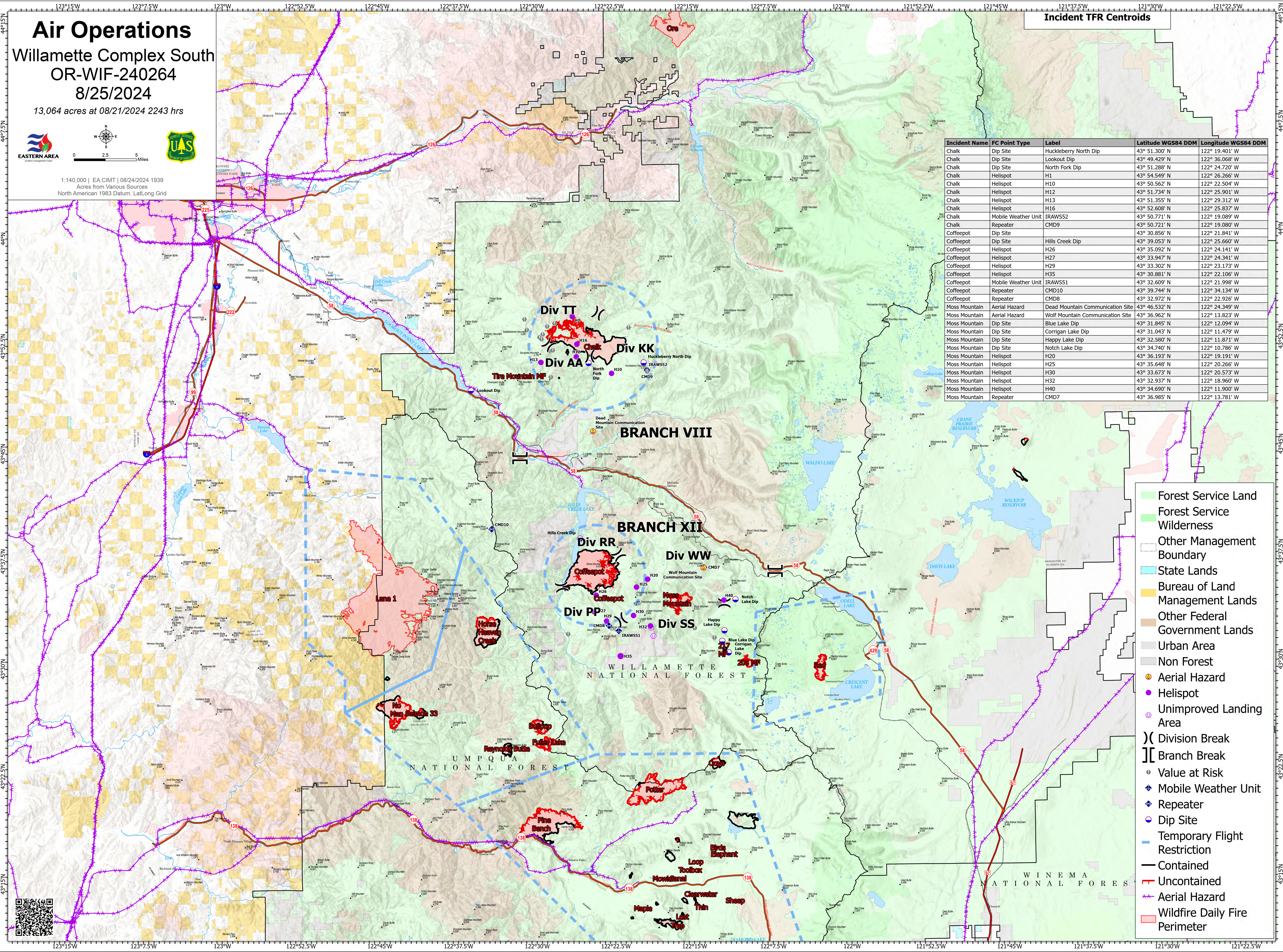
Willamette Complex South
OR-WIF-240264
8/25/2024
13,064 acres at 08/21/2024 2243 hrs



1:140,000 | EA CIMT | 08/24/2024 1939
Acres from Various Sources
North American 1983 Datum, Lat/Long Grid

Incident TFR Centroids

Incident Name	FC Point Type	Label	Latitude WGS84 DDM	Longitude WGS84 DDM
Chalk	Dip Site	Huckleberry North Dip	43° 51.300' N	122° 19.401' W
Chalk	Dip Site	Lookout Dip	43° 49.429' N	122° 36.068' W
Chalk	Dip Site	North Fork Dip	43° 51.288' N	122° 24.720' W
Chalk	Helispot	H1	43° 54.549' N	122° 26.266' W
Chalk	Helispot	H10	43° 50.562' N	122° 22.504' W
Chalk	Helispot	H12	43° 51.734' N	122° 25.901' W
Chalk	Helispot	H13	43° 51.355' N	122° 29.312' W
Chalk	Helispot	H16	43° 52.608' N	122° 25.837' W
Chalk	Mobile Weather Unit	IRAWS52	43° 50.771' N	122° 19.089' W
Chalk	Repeater	CMD9	43° 50.721' N	122° 19.080' W
Coffeepot	Dip Site	Hills Creek Dip	43° 30.856' N	122° 21.841' W
Coffeepot	Dip Site	Hills Creek Dip	43° 39.053' N	122° 25.660' W
Coffeepot	Helispot	H26	43° 35.092' N	122° 24.141' W
Coffeepot	Helispot	H27	43° 33.947' N	122° 24.341' W
Coffeepot	Helispot	H29	43° 33.302' N	122° 23.173' W
Coffeepot	Helispot	H35	43° 30.881' N	122° 22.106' W
Coffeepot	Mobile Weather Unit	IRAWS51	43° 32.609' N	122° 21.998' W
Coffeepot	Repeater	CMD10	43° 39.744' N	122° 34.134' W
Coffeepot	Repeater	CMD8	43° 32.972' N	122° 22.926' W
Moss Mountain	Aerial Hazard	Dead Mountain Communication Site	43° 46.532' N	122° 24.349' W
Moss Mountain	Aerial Hazard	Wolf Mountain Communication Site	43° 36.962' N	122° 13.823' W
Moss Mountain	Dip Site	Blue Lake Dip	43° 31.845' N	122° 12.094' W
Moss Mountain	Dip Site	Corrigan Lake Dip	43° 31.043' N	122° 11.479' W
Moss Mountain	Dip Site	Happy Lake Dip	43° 32.580' N	122° 11.871' W
Moss Mountain	Dip Site	Notch Lake Dip	43° 34.740' N	122° 10.786' W
Moss Mountain	Helispot	H20	43° 36.193' N	122° 19.191' W
Moss Mountain	Helispot	H25	43° 35.648' N	122° 20.266' W
Moss Mountain	Helispot	H30	43° 33.673' N	122° 20.573' W
Moss Mountain	Helispot	H32	43° 32.937' N	122° 18.960' W
Moss Mountain	Helispot	H40	43° 34.690' N	122° 11.900' W
Moss Mountain	Repeater	CMD7	43° 36.985' N	122° 13.781' W



- Forest Service Land
- Forest Service Wilderness
- Other Management Boundary
- State Lands
- Bureau of Land Management Lands
- Other Federal Government Lands
- Urban Area
- Non Forest
- Aerial Hazard
- Helispot
- Unimproved Landing Area
-) Division Break
- [Branch Break
- Value at Risk
- ◆ Mobile Weather Unit
- ◆ Repeater
- Dip Site
- Temporary Flight Restriction
- Contained
- Uncontained
- Aerial Hazard
- Wildfire Daily Fire Perimeter

