



**Pilot**  
 Sandstone  
 OR-MHF-000818  
 702 acres  
 Blister Creek  
 OR-MHF-000808  
 18 acres  
 08/25/2024 Day  
 Acres updated  
 20240819 @ 2000 PDT

FC Point Type	Label	Longitude WGS84 DDM	Latitude WGS84 DDM	Elevation (Feet)
Aerial Hazard		122° 11.211' W	44° 55.572' N	1066
Camp	Sandstone	122° 02.628' W	45° 04.984' N	486
Camp	Job Corp	122° 03.598' W	45° 05.547' N	473
Dip Site		122° 04.272' W	45° 01.276' N	455
Dip Site	Surprise Dip	122° 10.972' W	45° 01.190' N	1229
Drop Point	110	122° 08.881' W	44° 58.104' N	728
Drop Point	112	122° 09.250' W	44° 58.122' N	772
Drop Point	114	122° 09.576' W	44° 58.242' N	910
Drop Point	105	122° 07.308' W	44° 58.174' N	582
Drop Point	120	122° 11.360' W	44° 58.015' N	1130
Drop Point	130	122° 12.129' W	44° 59.127' N	1333
Drop Point	140	122° 09.324' W	44° 59.336' N	1287
Drop Point	145	122° 07.637' W	44° 59.883' N	1196
Drop Point	102	122° 03.879' W	44° 59.547' N	498
Drop Point	125	122° 10.953' W	44° 58.752' N	883
Drop Point	147	122° 09.641' W	44° 59.093' N	1321
Drop Point	113	122° 09.432' W	44° 58.587' N	995
Drop Point	103	122° 05.395' W	44° 58.617' N	538
Helispot	180	122° 03.211' W	45° 04.936' N	466
Helispot	185	122° 09.193' W	44° 58.168' N	766
Helispot	195	122° 11.651' W	44° 59.853' N	1360
Helispot	197	122° 11.161' W	44° 59.558' N	1289
Helispot	198	122° 06.229' W	45° 00.230' N	1153
Helispot	199	122° 10.157' W	44° 59.175' N	1349
Repeater	CMD 1	122° 10.001' W	44° 59.517' N	1574

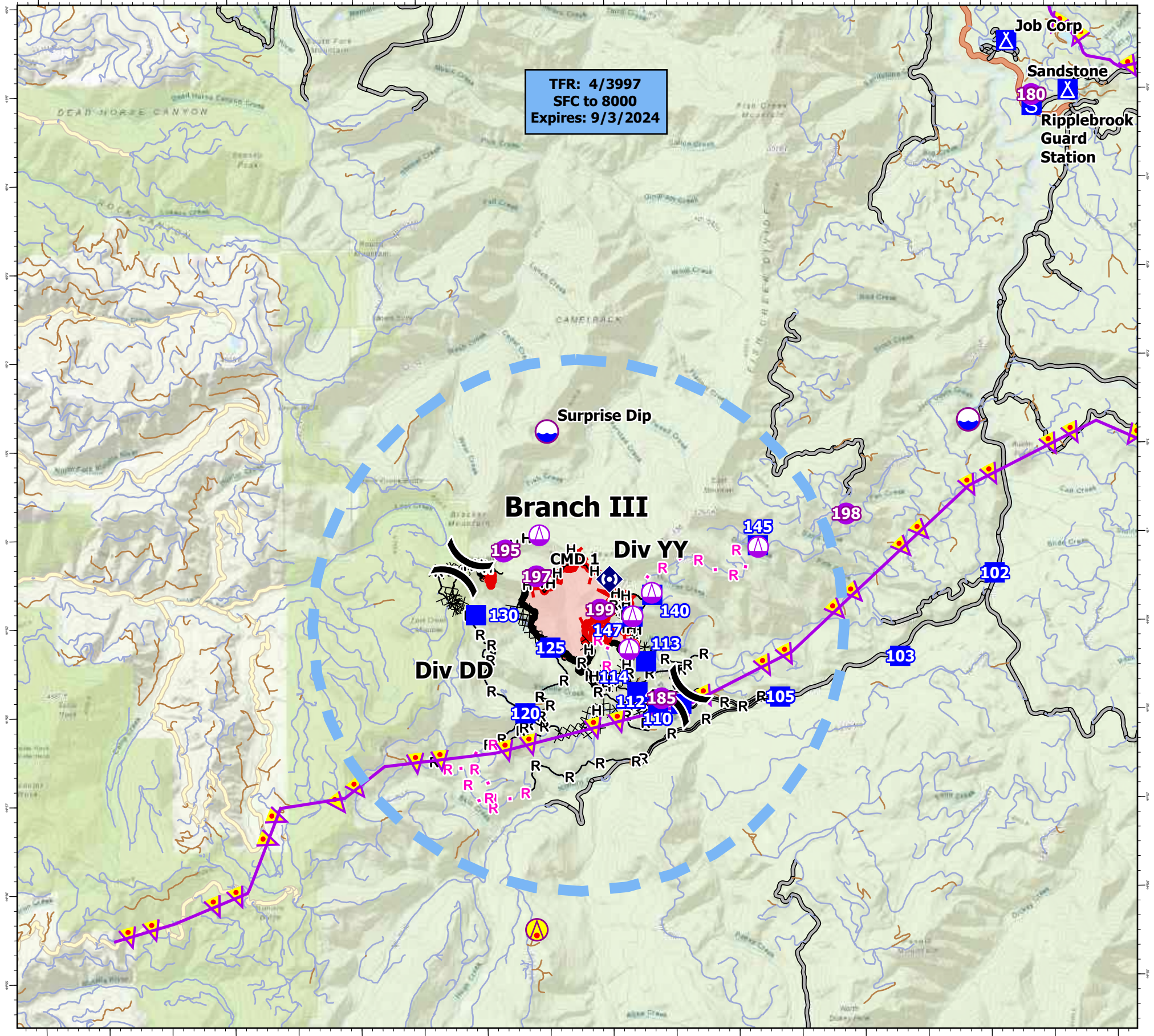
- Mainline Rd
- Drop Point
- Completed Road as Line
- Federal or State highway
- Camp
- Planned Hand Line
- Paved
- Staging Area
- Planned Road as Line
- All weather
- Hot Spot - Spot Fire
- Aerial Hazard
- Dirt
- Repeater
- Temporary Flight Restriction
- Aerial Hazard
- Dip Site
- Contained
- Helispot
- Completed Dozer Line
- Uncontained
- Sling Site
- Completed Hand Line
- Wildfire Daily Fire Perimeter
- Division Break
- Completed Mixed Construction Line

### Incident Frequencies

Name	AM_FM	RX	RX_Tone	TX	TX_Tone
A/A Primary	TFR-AM	120.1500		120.1500	
A/A (Rotor)	AM	128.6750		128.6750	
A/G Primary	FM	167.1750		167.1750	
A/G Secondary	FM	171.9000		171.9000	



1:90,000 | NW IMT10 | 8/24/2024 2041  
 Acres from IR  
 North American 1983 Datum. LatLong Grid



**TFR: 4/3997**  
**SFC to 8000**  
**Expires: 9/3/2024**