



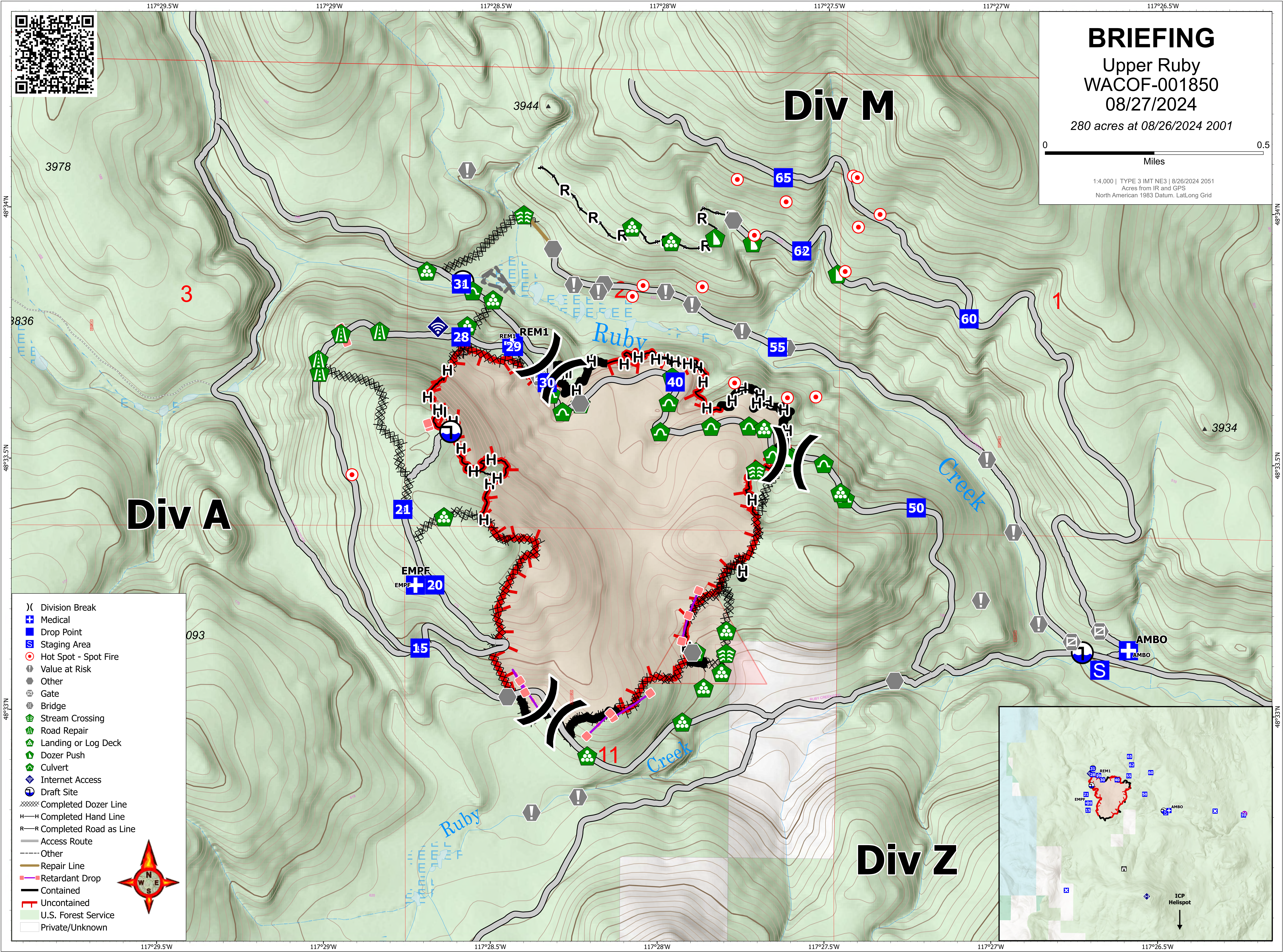
# BRIEFING

Upper Ruby  
WACOF-001850  
08/27/2024

280 acres at 08/26/2024 2001



1:4,000 | TYPE 3 IMT NE3 | 8/26/2024 2051  
Acres from IR and GPS  
North American 1983 Datum, Lat/Long Grid



- (X) Division Break
- ⊕ Medical
- Drop Point
- ⊞ Staging Area
- Hot Spot - Spot Fire
- ⚠ Value at Risk
- Other
- ⚡ Gate
- ⚙ Bridge
- 🌳 Stream Crossing
- 🛠 Road Repair
- 🏠 Landing or Log Deck
- 🚧 Dozer Push
- 🌳 Culvert
- 📶 Internet Access
- ⚙ Draft Site
- ⚡ Completed Dozer Line
- Completed Hand Line
- Completed Road as Line
- Access Route
- Other
- Repair Line
- Retardant Drop
- Contained
- Uncontained
- 🌳 U.S. Forest Service
- Private/Unknown

