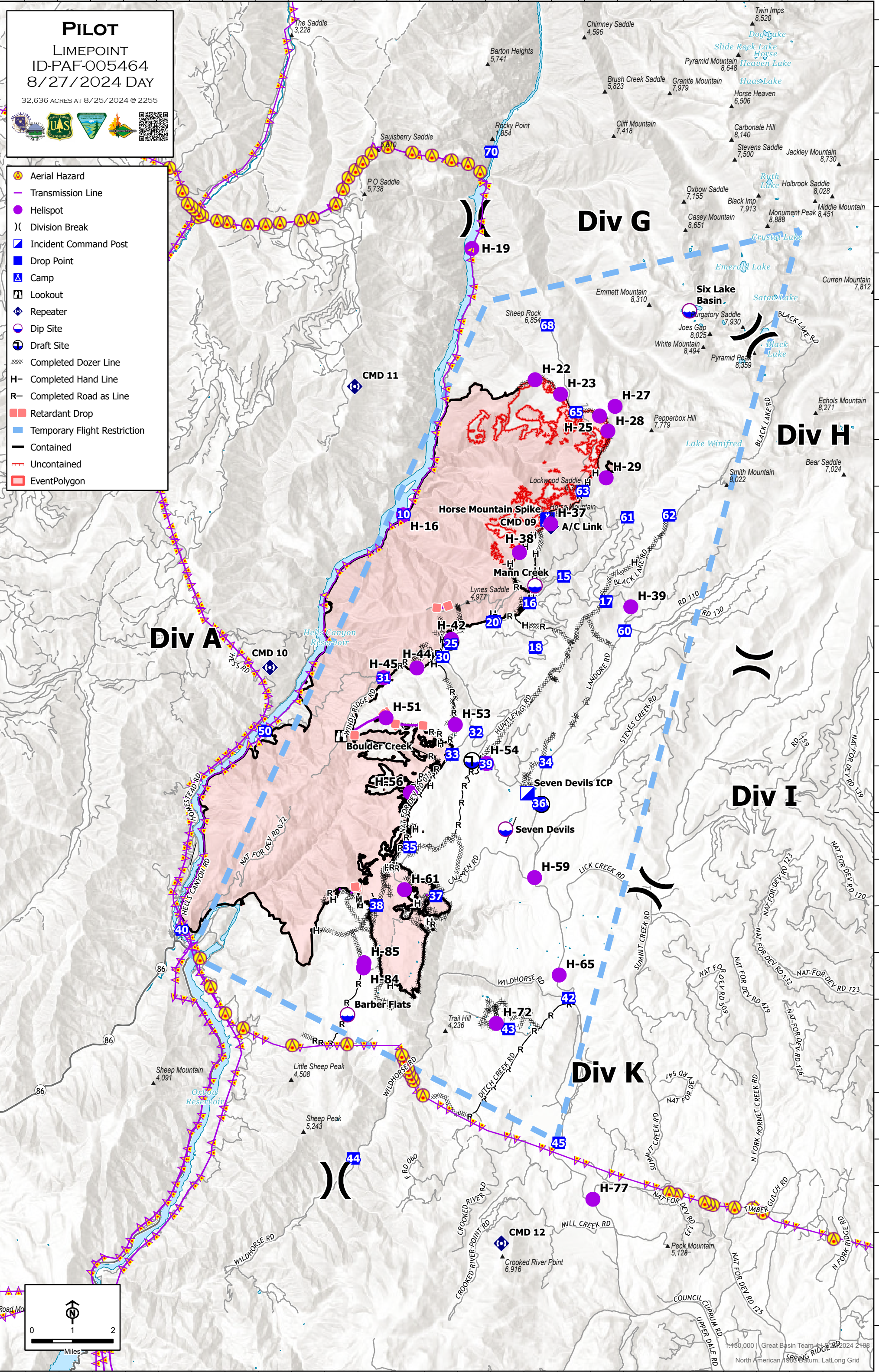
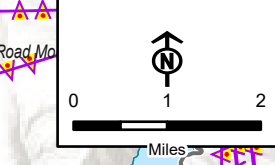


PILOT
 LIMEPOINT
 ID-PAF-005464
 8/27/2024 DAY
 32,636 ACRES AT 8/25/2024 @ 2255

- Aerial Hazard
- Transmission Line
- Helispot
- Division Break
- Incident Command Post
- Drop Point
- Camp
- Lookout
- Repeater
- Dip Site
- Draft Site
- Completed Dozer Line
- Completed Hand Line
- Completed Road as Line
- Retardant Drop
- Temporary Flight Restriction
- Contained
- Uncontained
- EventPolygon



| FC Point Type | Label | Comments | Elevation (Feet) | Latitude WGS84 DDM | Longitude WGS84 DDM |
|---------------|----------------------|--|------------------|--------------------|---------------------|
| Camp | Horse Mountain Spike | | 6891 | 45° 07.323' N | 116° 40.190' W |
| Dip Site | Barber Flats | OX Ranch LUA | 4236 | 44° 56.717' N | 116° 46.284' W |
| Dip Site | Mann Creek | | 4663 | 45° 05.902' N | 116° 40.576' W |
| Dip Site | Seven Devils | OX Ranch LUA | 4421 | 45° 00.685' N | 116° 41.494' W |
| Dip Site | Six Lake Basin | | | 45° 11.782' N | 116° 35.858' W |
| Drop Point | 10 | Gravel lot adjacent to helispot | 1704 | 45° 07.440' N | 116° 44.547' W |
| Drop Point | 15 | | 4705 | 45° 06.101' N | 116° 39.704' W |
| Drop Point | 16 | | 4412 | 45° 05.532' N | 116° 40.741' W |
| Drop Point | 17 | | 5730 | 45° 05.557' N | 116° 38.425' W |
| Drop Point | 18 | Drop point to support Div-I contingency line | 5374 | 45° 04.578' N | 116° 40.570' W |
| Drop Point | 19 | | 4244 | 45° 05.140' N | 116° 41.795' W |
| Drop Point | 20 | | 4231 | 45° 05.126' N | 116° 41.867' W |
| Drop Point | 25 | | 4075 | 45° 04.669' N | 116° 43.117' W |
| Drop Point | 30 | | 4155 | 45° 04.382' N | 116° 43.368' W |
| Drop Point | 31 | | 3962 | 45° 03.940' N | 116° 45.163' W |
| Drop Point | 32 | | 5023 | 45° 02.769' N | 116° 42.375' W |
| Drop Point | 33 | | 5036 | 45° 02.292' N | 116° 43.094' W |
| Drop Point | 34 | | 4439 | 45° 02.119' N | 116° 40.269' W |
| Drop Point | 35 | | 4734 | 45° 00.308' N | 116° 44.392' W |
| Drop Point | 36 | | 4366 | 45° 01.237' N | 116° 40.478' W |
| Drop Point | 37 | | 4501 | 44° 59.257' N | 116° 43.599' W |
| Drop Point | 38 | | 4649 | 44° 59.056' N | 116° 45.399' W |
| Drop Point | 39 | | 4904 | 45° 02.082' N | 116° 42.070' W |
| Drop Point | 40 | | 1711 | 44° 58.546' N | 116° 51.281' W |
| Drop Point | 42 | | 4256 | 44° 57.060' N | 116° 39.617' W |
| Drop Point | 43 | 891 Rd | 4458 | 44° 56.401' N | 116° 41.428' W |
| Drop Point | 44 | | 2891 | 44° 53.635' N | 116° 46.121' W |
| Drop Point | 45 | | 4569 | 44° 53.955' N | 116° 39.929' W |
| Drop Point | 50 | | 1716 | 45° 02.809' N | 116° 48.758' W |
| Drop Point | 60 | | 4841 | 45° 04.930' N | 116° 37.872' W |
| Drop Point | 61 | | | 45° 07.361' N | 116° 37.772' W |
| Drop Point | 62 | | 6774 | 45° 07.399' N | 116° 36.506' W |
| Drop Point | 63 | | 6396 | 45° 07.930' N | 116° 39.120' W |

| FC Point Type | Label | Comments | Elevation (Feet) | Latitude WGS84 DDM | Longitude WGS84 DDM |
|-----------------------|------------------|---|------------------|--------------------|---------------------|
| Drop Point | 65 | | 7051 | 45° 09.621' N | 116° 39.311' W |
| Drop Point | 68 | | 6718 | 45° 11.485' N | 116° 40.167' W |
| Drop Point | 70 | | 1577 | 45° 15.210' N | 116° 41.847' W |
| Helispot | H-16 | Type II, concrete pad with windsock | 1705 | 45° 07.432' N | 116° 44.553' W |
| Helispot | H-19 | Type II | 1703 | 45° 13.137' N | 116° 42.447' W |
| Helispot | H-22 | | 6469 | 45° 10.318' N | 116° 40.548' W |
| Helispot | H-23 | | 7119 | 45° 10.005' N | 116° 39.777' W |
| Helispot | H-25 | Type III | 7387 | 45° 09.535' N | 116° 38.598' W |
| Helispot | H-27 | | 7595 | 45° 09.740' N | 116° 38.128' W |
| Helispot | H-28 | | 7557 | 45° 09.212' N | 116° 38.349' W |
| Helispot | H-29 | Type III | 7115 | 45° 08.208' N | 116° 38.408' W |
| Helispot | H-37 | Type II | 6891 | 45° 07.227' N | 116° 40.091' W |
| Helispot | H-38 | Type III | 6050 | 45° 06.615' N | 116° 41.041' W |
| Helispot | H-39 | Type II | 5227 | 45° 05.441' N | 116° 37.679' W |
| Helispot | H-42 | Air Ambulance Cuprum | 4080 | 45° 04.759' N | 116° 43.111' W |
| Helispot | H-44 | Type II | 4013 | 45° 04.148' N | 116° 44.157' W |
| Helispot | H-45 | Air Ambulance Windy Ridge | 3962 | 45° 03.941' N | 116° 45.166' W |
| Helispot | H-51 | Type III | 4585 | 45° 03.080' N | 116° 45.096' W |
| Helispot | H-53 | Type II | 5036 | 45° 02.927' N | 116° 43.001' W |
| Helispot | H-54 | Type II | 4909 | 45° 02.095' N | 116° 42.060' W |
| Helispot | H-56 | Type II | 4828 | 45° 01.475' N | 116° 44.369' W |
| Helispot | H-59 | Air Ambulance Calf-Pen Intersection | 4288 | 44° 59.644' N | 116° 40.623' W |
| Helispot | H-61 | | 4716 | 44° 59.395' N | 116° 44.555' W |
| Helispot | H-65 | Air Ambulance Rocky Comfort | 4488 | 44° 57.552' N | 116° 39.892' W |
| Helispot | H-72 | | 4403 | 44° 56.520' N | 116° 41.798' W |
| Helispot | H-77 | Air Ambulance Sheep Driveway-Peck Mtn. | 4633 | 44° 52.742' N | 116° 38.904' W |
| Helispot | H-84 | | 4292 | 44° 57.720' N | 116° 45.799' W |
| Helispot | H-85 | Type III | 4298 | 44° 57.832' N | 116° 45.781' W |
| Incident Command Post | Seven Devils ICP | OX Ranch LUA | 4478 | 45° 01.455' N | 116° 40.828' W |
| Lookout | Boulder Creek | | 4046 | 45° 02.692' N | 116° 46.453' W |
| Repeater | A/C Link | A/C Link. Installed to connect Helibase to Victor TFR | 6855 | 45° 07.169' N | 116° 40.086' W |
| Repeater | CMD 09 | | 6884 | 45° 07.316' N | 116° 40.190' W |