

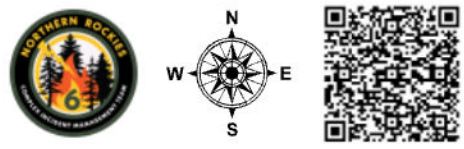
# Pilot

Homestead Complex  
OR-UPF-240311

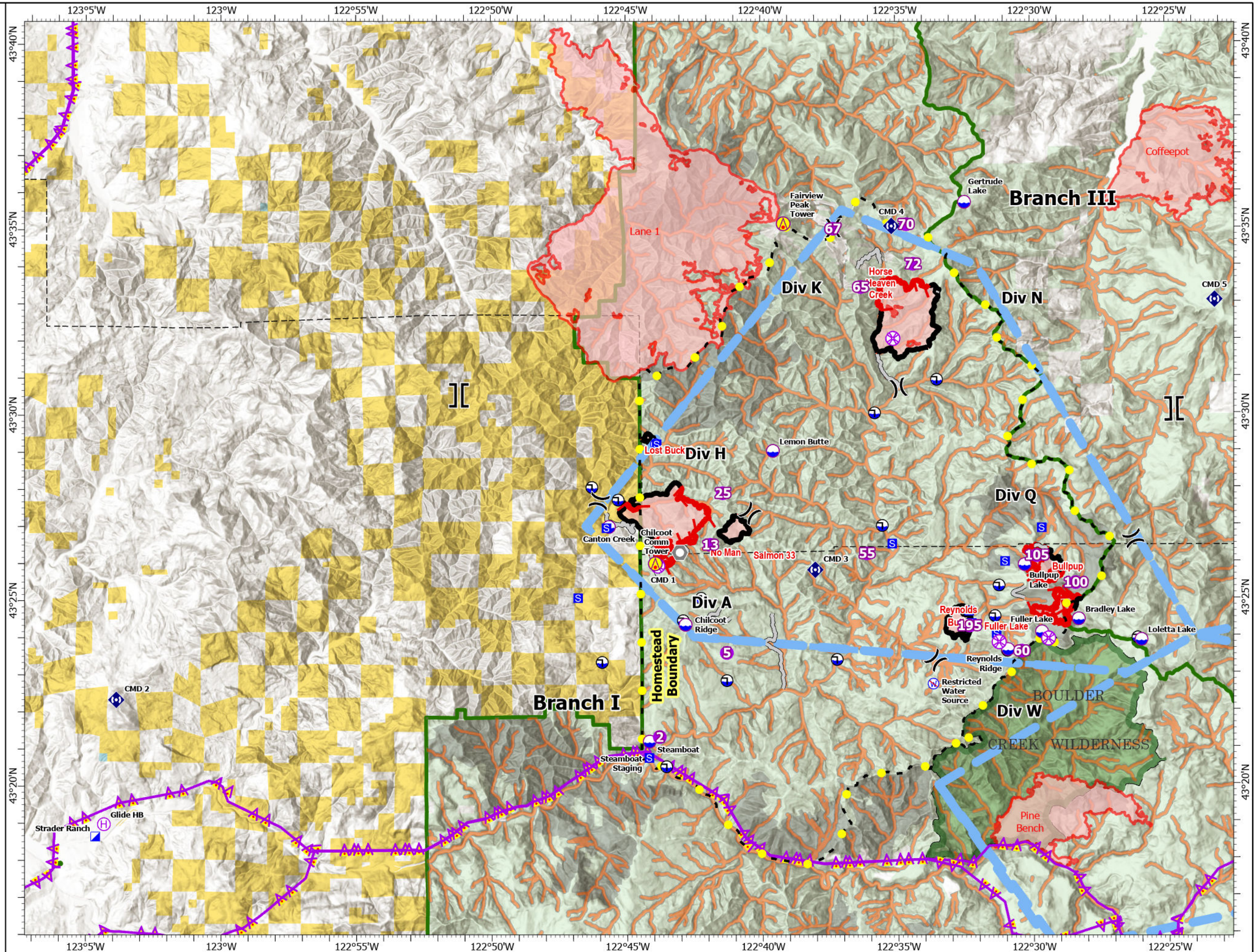
8/28/2024

5910 acres at 08/26/2024 2225 PDT

- Aerial Hazard
- Helispot
- Helibase
- UAS Launch and Recovery
- Division Break
- Branch Break
- Incident Command Post
- Camp
- Staging Area
- Landmark
- Repeater
- Dip Site
- Draft Site
- Restricted Water Source
- Access Route
- Homestead Boundary
- Temporary Flight Restriction
- Contained
- Uncontained
- Electric Power Transmission Lines
- Retardant Avoidance Areas



0 0.5 1 2 Nautical Miles  
0 1.5 3 6 Kilometers  
1:180,000 | NR6 | 8/27/2024 2017  
IR Flight  
North American 1983 Datum, LatLong Grid



FC Point Type	Label	Latitude WGS84 DDM	Longitude WGS84 DDM	Restrictions	Comments
Aerial Hazard	Chilcoot Comm Tower	43° 25.979' N	122° 43.939' W		per FOBS Mike Keys
Aerial Hazard	Fairview Peak Tower	43° 35.134' N	122° 39.161' W		
Dip Site	Bradley Lake	43° 24.456' N	122° 28.294' W	Yes - see specification	observed from a distance. looks shallow, loggy and hemmed in by tall trees. pilot should confirm. READ Dodd placed yellow flagged stick at current water level on 7/31/24 @ 1500 hours at west end of lake, end of log.
Dip Site	Bullpup Lake	43° 25.926' N	122° 30.284' W	Yes - see specification	shallow, lots of logs in water. tall canopy surrounding pond. would need close pilot recon before using as a dip site.
Dip Site	Canton Creek	43° 26.976' N	122° 45.652' W		Canton Creek. READ McEnroe approved. Clean bucket prior to using.
Dip Site	Chilcoot Ridge	43° 24.331' N	122° 42.828' W	Yes - see specification	Cleared with restrictions by REAFs King and Kim on 7/24/24. Restricted (invasive species): if used, one source, one bucket. Use retardant avoidance layer for drops (water should not be dropped on pond, wetland, or waterway). Not for draft, dip only.
Dip Site	Fuller Lake	43° 24.110' N	122° 29.656' W	Yes - see specification	dark water, some rocks esp. on south end. deepest on south end, emergent vegetation on northern 2/3
Dip Site	Gertrude Lake	43° 35.703' N	122° 32.452' W	Yes - see specification	
Dip Site	Lemon Butte	43° 29.011' N	122° 39.577' W	No	Lemon Butte actual dip site location. Approved by REAFs King and Kim. Bolts are facing out (unlike Steamboat). Refilled by tenders. Sketchy road to access. West side of 3825 does not have driveable water bars, so access is from 3825 from the east.
Dip Site	Loletta Lake	43° 23.892' N	122° 25.981' W	Yes - see specification	

FC Point Type	Label	Latitude WGS84 DDM	Longitude WGS84 DDM	Restrictions	Comments
Dip Site	Reynolds Ridge	43° 23.639' N	122° 30.910' W	No	Hemmed in by tall trees - needs pilot review
Dip Site	Steamboat	43° 21.186' N	122° 44.168' W	No	Approved by REAF Kim. Within in water work windows 7/1 - 9/15. One source, one bucket (clean bucket required before dipping).
Helibase	Glide HB	43° 18.976' N	123° 04.322' W		
Helispot	100	43° 25.432' N	122° 28.401' W		Approved for type 2 helo
Helispot	105	43° 26.168' N	122° 29.831' W		Interior of the Bullpup Lake fire perimeter, End of improved road / dozer line, DIV Q
Helispot	13	43° 26.485' N	122° 41.904' W		Approved for type 3 helo
Helispot	195	43° 24.278' N	122° 32.333' W		Elev 4,360ft; Type 3, HIGE; Small Mound
Helispot	2	43° 21.307' N	122° 43.795' W		Elev 1,500ft; 3 Concrete Pads, Type 2, HIGE
Helispot	25	43° 27.875' N	122° 41.436' W		Hover Hole. West approach only, landing on road
Helispot	5	43° 23.570' N	122° 41.307' W		Elev 3,806ft; Type 3; HIGE
Helispot	55	43° 26.238' N	122° 36.109' W		Elev 2160ft; Type 3, HOGE
Helispot	60	43° 23.594' N	122° 30.402' W		Approved for Type 3 helicopters. W wind could cause issues.
Helispot	65	43° 33.420' N	122° 36.304' W		Type 2 possibly Type1
Helispot	67	43° 34.992' N	122° 37.321' W		Dust abatement needed
Helispot	70	43° 35.105' N	122° 34.609' W		Elev 4725ft, HOGE; Type 3
Helispot	72	43° 34.040' N	122° 34.361' W		Must have dust abatement before landing. Hover hole with small trees around, max power lift and land site.
Incident Command Post	Strader Ranch	43° 18.646' N	123° 04.642' W		373 French Creek Rd, Glide, OR
Restricted Water Source		43° 29.205' N	122° 43.908' W		REAF Kim 8/12/24. Do not draft. Creek will go dry. Use water source near DP8 instead.
Restricted Water Source	Restricted Water Source	43° 22.717' N	122° 33.677' W		Beaver pond per REEDs