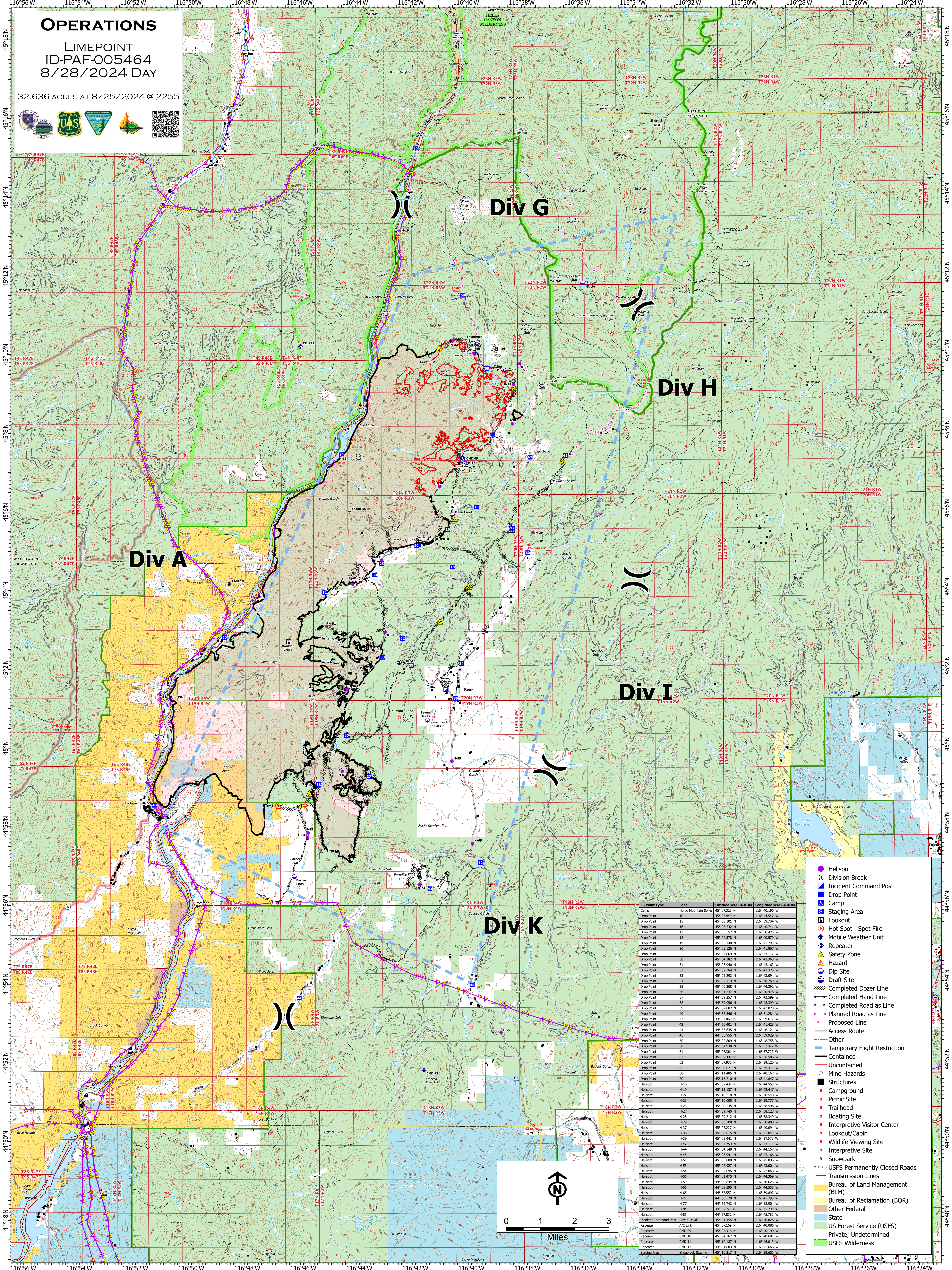


OPERATIONS

LIMEPOINT
ID-PAF-005464
8/28/2024 DAY

32,636 ACRES AT 8/25/2024 @ 2255



FC Point Type	Label	Latitude WGS84 DDM	Longitude WGS84 DDM
Drop Point	15	45° 06.101' N	116° 39.704' W
Drop Point	16	45° 05.532' N	116° 40.741' W
Drop Point	17	45° 05.557' N	116° 38.425' W
Drop Point	18	45° 06.528' N	116° 40.578' W
Drop Point	19	45° 05.140' N	116° 41.795' W
Drop Point	20	45° 05.126' N	116° 41.867' W
Drop Point	21	45° 04.669' N	116° 43.117' W
Drop Point	25	45° 03.940' N	116° 45.163' W
Drop Point	26	45° 02.769' N	116° 43.375' W
Drop Point	33	45° 02.292' N	116° 43.058' W
Drop Point	36	45° 03.288' N	116° 45.269' W
Drop Point	35	45° 00.308' N	116° 46.352' W
Drop Point	36	45° 01.237' N	116° 46.478' W
Drop Point	37	44° 59.257' N	116° 43.599' W
Drop Point	38	45° 03.268' N	116° 45.388' W
Drop Point	39	45° 02.090' N	116° 42.070' W
Drop Point	40	44° 58.546' N	116° 51.281' W
Drop Point	42	44° 57.069' N	116° 39.617' W
Drop Point	43	44° 58.428' N	116° 42.428' W
Drop Point	44	44° 53.635' N	116° 46.125' W
Drop Point	45	44° 53.955' N	116° 39.929' W
Drop Point	50	45° 02.809' N	116° 48.758' W
Drop Point	50	45° 04.030' N	116° 42.872' W
Drop Point	61	45° 03.261' N	116° 37.722' W
Drop Point	62	45° 07.399' N	116° 38.506' W
Drop Point	63	45° 07.930' N	116° 39.120' W
Drop Point	65	45° 09.621' N	116° 39.311' W
Drop Point	68	45° 11.462' N	116° 45.146' W
Drop Point	70	45° 15.210' N	116° 41.847' W
Drop Point	70	45° 07.227' N	116° 40.091' W
Drop Point	H-16	45° 07.432' N	116° 44.553' W
Drop Point	H-19	45° 07.137' N	116° 43.041' W
Drop Point	H-22	45° 10.341' N	116° 42.627' W
Drop Point	H-23	45° 10.005' N	116° 39.777' W
Drop Point	H-25	45° 09.535' N	116° 38.598' W
Drop Point	H-27	45° 09.240' N	116° 38.128' W
Drop Point	H-28	45° 09.212' N	116° 45.166' W
Drop Point	H-29	45° 08.208' N	116° 38.408' W
Drop Point	H-37	45° 07.227' N	116° 40.091' W
Drop Point	H-38	45° 06.613' N	116° 43.041' W
Drop Point	H-39	45° 07.644' N	116° 42.627' W
Drop Point	H-42	45° 04.759' N	116° 43.111' W
Drop Point	H-44	45° 04.148' N	116° 44.157' W
Drop Point	H-45	45° 03.941' N	116° 45.166' W
Drop Point	H-51	45° 03.100' N	116° 43.058' W
Drop Point	H-53	45° 02.927' N	116° 43.001' W
Drop Point	H-54	45° 02.095' N	116° 42.060' W
Drop Point	H-56	45° 01.475' N	116° 46.389' W
Drop Point	H-59	44° 59.644' N	116° 40.086' W
Drop Point	H-61	44° 59.395' N	116° 44.555' W
Drop Point	H-65	44° 57.552' N	116° 39.892' W
Drop Point	H-72	44° 58.520' N	116° 41.298' W
Drop Point	H-77	44° 51.742' N	116° 38.804' W
Drop Point	H-84	44° 57.720' N	116° 45.799' W
Drop Point	H-85	44° 57.832' N	116° 45.781' W
Drop Point	H-85	45° 01.455' N	116° 40.828' W
Drop Point	ICP	45° 07.169' N	116° 40.086' W
Drop Point	ICP	45° 07.310' N	116° 40.190' W
Drop Point	ICP	45° 04.167' N	116° 48.601' W
Drop Point	ICP	45° 10.189' N	116° 46.013' W
Drop Point	ICP	44° 51.851' N	116° 41.666' W
Drop Point	ICP	45° 10.217' N	116° 39.651' W

- Helispot
- () Division Break
- Incident Command Post
- ▲ Drop Point
- Camp
- Staging Area
- Lookout
- Hot Spot - Spot Fire
- Mobile Weather Unit
- Repeater
- Safety Zone
- Hazard
- Dip Site
- Draft Site
- Completed Dozer Line
- Completed Hand Line
- Completed Road as Line
- Planned Road as Line
- Proposed Line
- Access Route
- Other
- Temporary Flight Restriction
- Contained
- Uncontained
- Mine Hazards
- Structures
- Campground
- Picnic Site
- Trailhead
- Boating Site
- Interpretive Visitor Center
- Lookout/Cabin
- Wildlife Viewing Site
- Interpretive Site
- Snowpack
- USFS Permanently Closed Roads
- Transmission Lines
- Bureau of Land Management (BLM)
- Bureau of Reclamation (BOR)
- Other Federal
- State
- US Forest Service (USFS)
- Private; Undetermined
- USFS Wilderness

