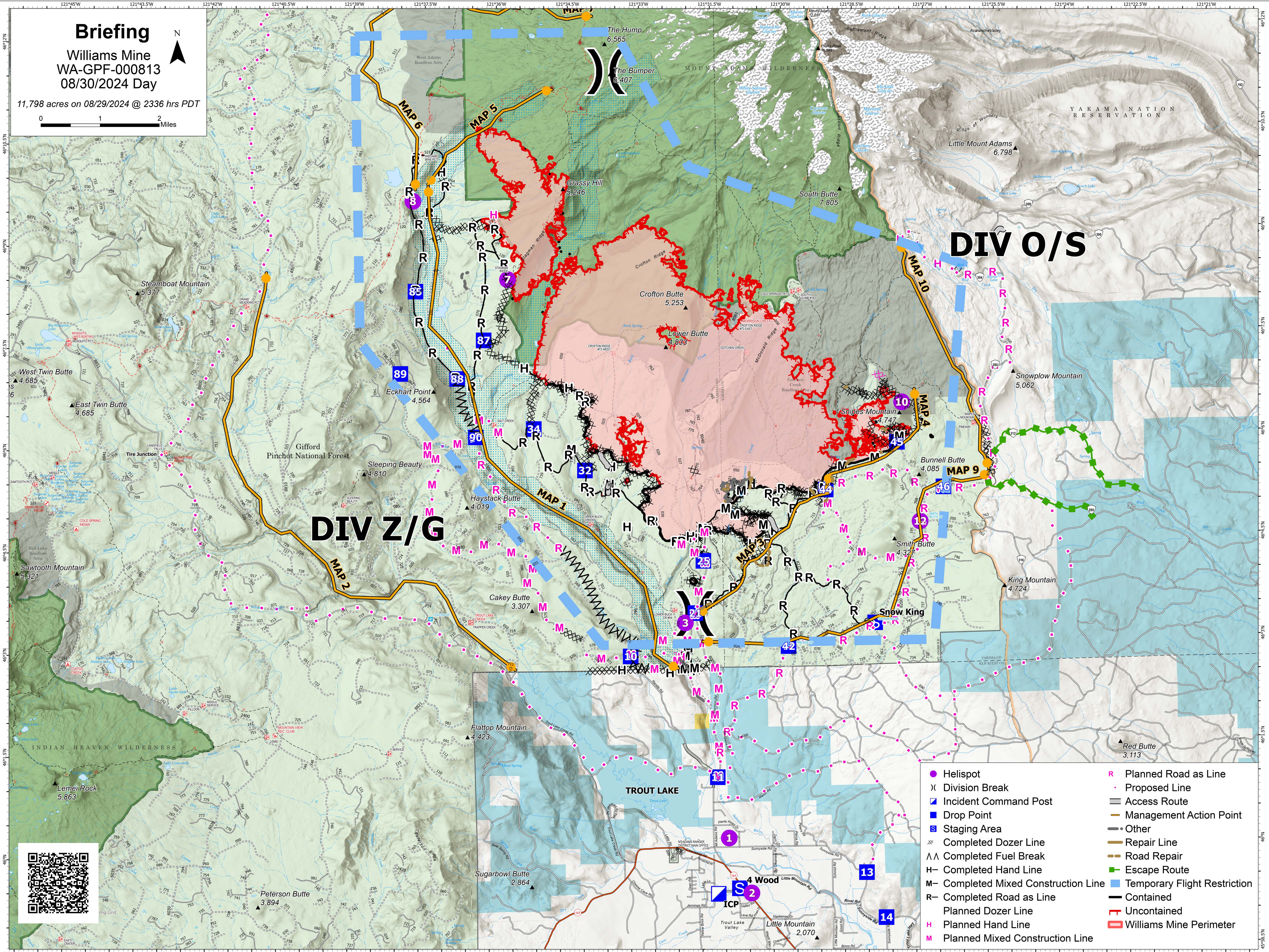
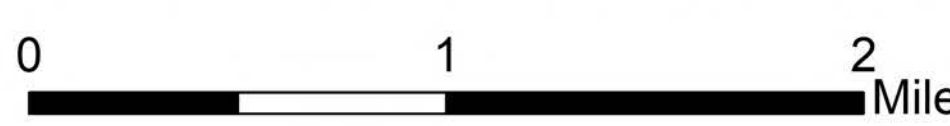


Briefing

Williams Mine
WA-GPF-000813
08/30/2024 Day

11,798 acres on 08/29/2024 @ 2336 hrs PDT



DIV O/S

DIV Z/G

- Helispot
- ⌘ Division Break
- ▣ Incident Command Post
- Drop Point
- ▢ Staging Area
- ⊗ Completed Dozer Line
- ∧∧ Completed Fuel Break
- Completed Hand Line
- Completed Mixed Construction Line
- Completed Road as Line
- Planned Dozer Line
- Planned Hand Line
- Planned Mixed Construction Line
- R Planned Road as Line
- Proposed Line
- Access Route
- Management Action Point
- Other
- Repair Line
- Road Repair
- Escape Route
- ▣ Temporary Flight Restriction
- Contained
- Uncontained
- ▣ Williams Mine Perimeter

