

# Pilot Map



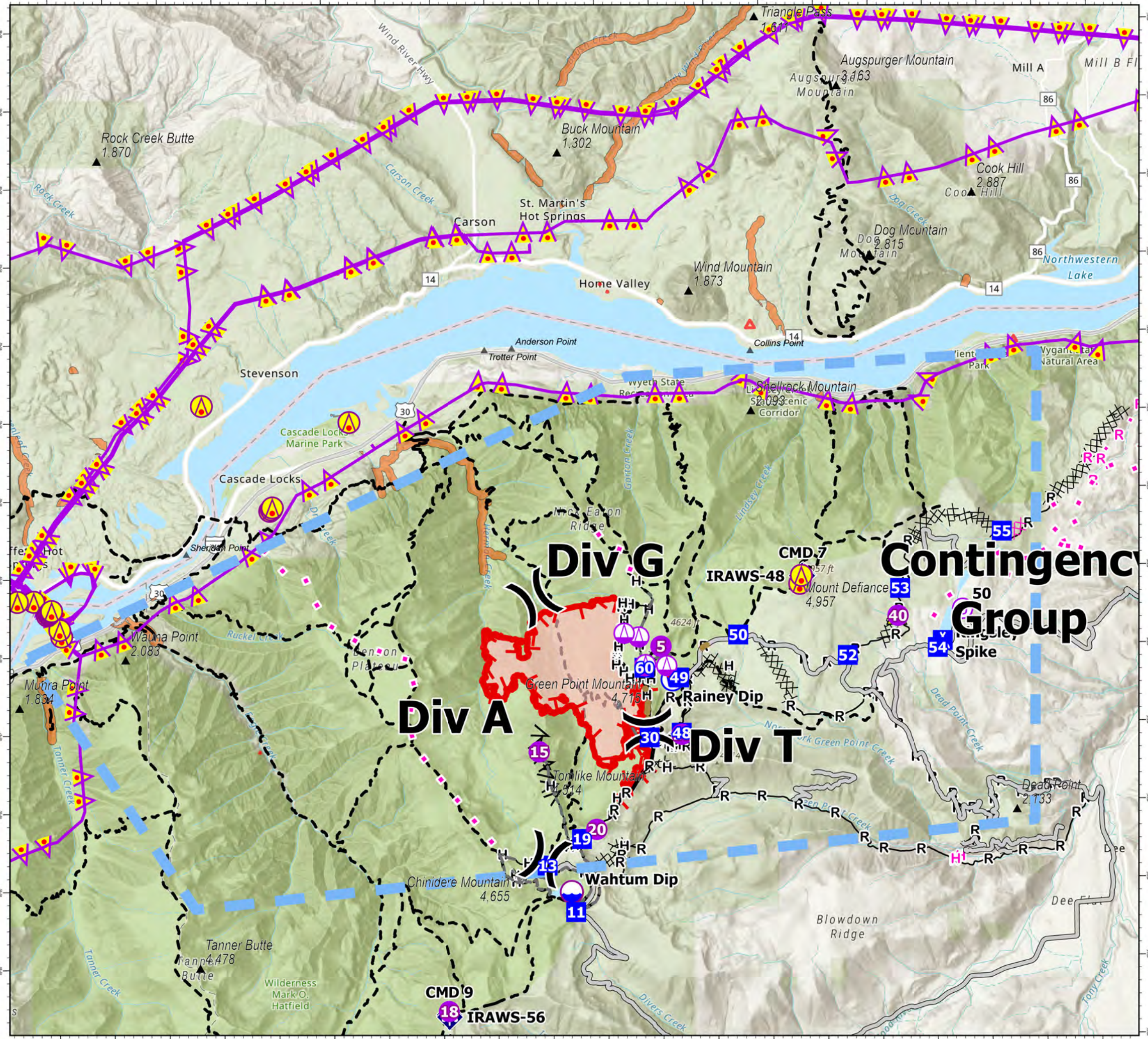
Whisky Creek  
 OR-MHF-000639  
 08/30/2024  
 2,084 acres  
 at 20240828 @ 0011

FC Point Type	Label	Elevation (Feet)	Latitude WGS84 DDM	Longitude WGS84 DDM
Aerial Hazard		14	45° 38.717' N	121° 57.383' W
Aerial Hazard		23	45° 38.717' N	121° 57.683' W
Aerial Hazard		77	45° 41.195' N	121° 54.277' W
Aerial Hazard		29	45° 38.267' N	121° 56.883' W
Aerial Hazard		13	45° 38.350' N	121° 56.917' W
Aerial Hazard		28	45° 38.538' N	121° 57.138' W
Aerial Hazard		27	45° 38.554' N	121° 57.112' W
Aerial Hazard		26	45° 38.572' N	121° 57.095' W
Aerial Hazard		26	45° 38.583' N	121° 57.081' W
Aerial Hazard		26	45° 38.594' N	121° 57.060' W
Aerial Hazard		1482	45° 38.817' N	121° 43.400' W
Aerial Hazard		1510	45° 38.920' N	121° 43.368' W
Aerial Hazard		178	45° 39.640' N	121° 53.055' W
Aerial Hazard		179	45° 39.859' N	121° 53.025' W
Aerial Hazard		176	45° 39.883' N	121° 53.008' W
Aerial Hazard		57	45° 40.964' N	121° 51.587' W
Camp	Kingsley Spike	973	45° 38.063' N	121° 40.801' W
Dip Site	Wahtum Dip	1136	45° 34.909' N	121° 47.638' W
Drop Point		52	45° 37.892' N	121° 42.545' W
Drop Point		50	45° 38.175' N	121° 44.537' W
Drop Point		49	45° 37.637' N	121° 45.624' W
Drop Point		48	45° 36.928' N	121° 45.592' W
Drop Point		11	45° 34.651' N	121° 47.565' W
Drop Point		53	45° 38.739' N	121° 41.572' W
Drop Point		54	45° 37.974' N	121° 40.893' W
Drop Point		13	45° 35.252' N	121° 48.074' W
Drop Point		55	45° 39.450' N	121° 39.690' W
Drop Point		60	45° 37.768' N	121° 46.253' W
Drop Point		30	45° 36.874' N	121° 46.178' W
Drop Point		19	45° 35.586' N	121° 47.440' W
Helispot		10	45° 36.908' N	121° 45.588' W
Helispot		15	45° 36.711' N	121° 48.195' W
Helispot		18	45° 33.402' N	121° 49.905' W
Helispot		40	45° 38.389' N	121° 41.618' W
Helispot		5	45° 38.040' N	121° 45.947' W
Helispot		20	45° 35.707' N	121° 47.167' W
Mobile Weather Unit	IRAWS-48	1510	45° 38.915' N	121° 43.356' W
Mobile Weather Unit	IRAWS-56	1355	45° 33.331' N	121° 49.897' W
Repeater	CMD 7	1506	45° 38.922' N	121° 43.338' W
Repeater	CMD 9	1350	45° 33.358' N	121° 49.903' W
Restricted Water Source	Rainey Dip	1248	45° 37.613' N	121° 45.745' W
Safety Zone		1070	45° 38.401' N	121° 41.639' W
Sling Site		1379	45° 38.163' N	121° 46.348' W
Sling Site		1393	45° 37.794' N	121° 46.245' W
Sling Site		1390	45° 37.808' N	121° 46.231' W
Sling Site		1260	45° 37.790' N	121° 45.847' W
Sling Site		1342	45° 38.213' N	121° 46.614' W
Unimproved Landing Area		50	45° 38.465' N	121° 40.428' W

- Aerial Hazard
- Helispot
- Sling Site
- Unimproved Landing Area
- Division Break
- Drop Point
- Camp
- Mobile Weather Unit
- Repeater
- Safety Zone
- Dip Site
- Restricted Water Source
- Completed Dozer Line
- Completed Fuel Break
- Completed Hand Line
- Completed Mixed Construction Line
- Completed Road as Line
- Access Route
- Other
- Repair Line
- Road Repair
- Aerial Hazard
- Temporary Flight Restriction
- Fire Retardant Avoidance

0 0.5 1 2  
 Nautical Miles

1:90,000 | NW CIMT 12 | 8/29/2024 2104  
 Acres from IR  
 North American 1983 Datum. LatLong Grid

## Contingency Group

## Div A

## Div G

## Div T