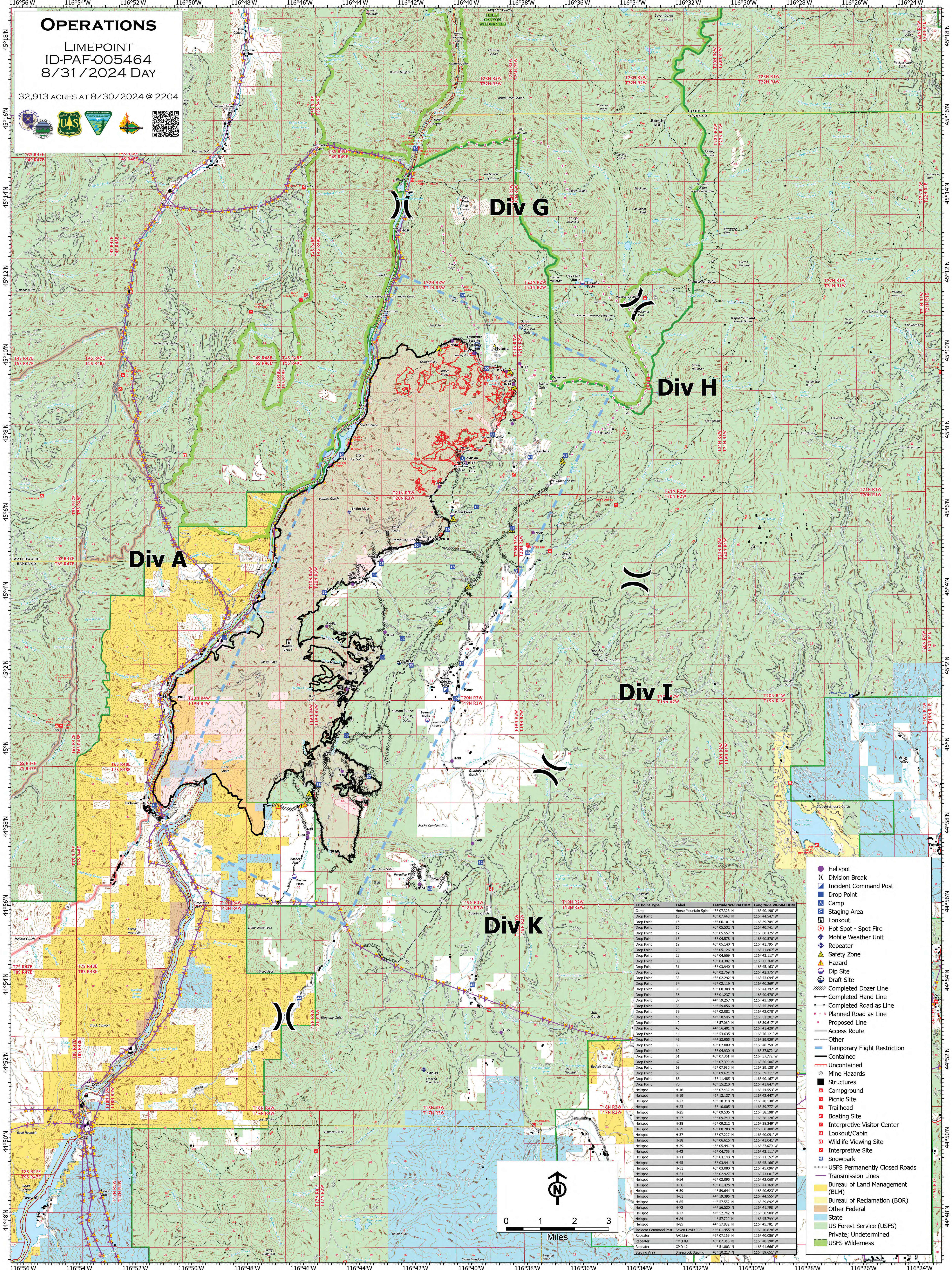


OPERATIONS

LIMEPOINT
ID-PAF-005464
8/31/2024 DAY

32,913 ACRES AT 8/30/2024 @ 2204



Div A

Div G

Div H

Div I

Div K

FC Point Type	Label	Latitude WGS84 DDM	Longitude WGS84 DDM
Camp	Horse Mountain Spike	49° 07.323 N	116° 40.190 W
Drop Point	15	49° 06.101 N	116° 39.704 W
Drop Point	16	49° 05.532 N	116° 40.741 W
Drop Point	17	49° 05.557 N	116° 38.425 W
Drop Point	18	49° 04.578 N	116° 40.570 W
Drop Point	19	49° 05.140 N	116° 41.795 W
Drop Point	20	49° 05.126 N	116° 41.867 W
Drop Point	25	49° 04.669 N	116° 43.117 W
Drop Point	30	49° 04.382 N	116° 43.368 W
Drop Point	31	49° 03.940 N	116° 45.163 W
Drop Point	32	49° 02.769 N	116° 42.375 W
Drop Point	33	49° 02.292 N	116° 43.094 W
Drop Point	34	49° 02.119 N	116° 40.269 W
Drop Point	35	49° 00.308 N	116° 44.392 W
Drop Point	36	49° 02.237 N	116° 40.678 W
Drop Point	37	44° 59.257 N	116° 43.599 W
Drop Point	38	44° 59.056 N	116° 45.399 W
Drop Point	39	49° 02.082 N	116° 42.070 W
Drop Point	40	49° 05.540 N	116° 39.261 W
Drop Point	42	44° 57.060 N	116° 39.637 W
Drop Point	43	44° 56.401 N	116° 41.428 W
Drop Point	44	44° 53.635 N	116° 46.121 W
Drop Point	45	44° 53.955 N	116° 39.929 W
Drop Point	50	49° 02.809 N	116° 40.756 W
Drop Point	60	49° 04.930 N	116° 37.872 W
Drop Point	61	49° 07.361 N	116° 37.772 W
Drop Point	62	49° 07.399 N	116° 36.500 W
Drop Point	63	49° 07.520 N	116° 39.120 W
Drop Point	65	49° 09.621 N	116° 39.311 W
Drop Point	68	49° 11.485 N	116° 40.167 W
Drop Point	70	49° 15.210 N	116° 41.847 W
Heligot	H-16	49° 07.432 N	116° 44.553 W
Heligot	H-19	49° 13.137 N	116° 42.857 W
Heligot	H-22	49° 10.318 N	116° 40.548 W
Heligot	H-23	49° 10.005 N	116° 39.777 W
Heligot	H-25	49° 09.535 N	116° 38.598 W
Heligot	H-27	49° 08.968 N	116° 38.128 W
Heligot	H-28	49° 09.212 N	116° 38.349 W
Heligot	H-29	49° 08.208 N	116° 38.408 W
Heligot	H-37	49° 07.227 N	116° 40.091 W
Heligot	H-38	49° 06.615 N	116° 41.041 W
Heligot	H-39	49° 08.441 N	116° 37.679 W
Heligot	H-42	49° 04.758 N	116° 43.111 W
Heligot	H-44	49° 04.148 N	116° 44.157 W
Heligot	H-45	49° 03.941 N	116° 45.160 W
Heligot	H-51	49° 03.080 N	116° 45.096 W
Heligot	H-53	49° 02.027 N	116° 43.001 W
Heligot	H-54	49° 02.095 N	116° 42.060 W
Heligot	H-56	49° 01.475 N	116° 44.369 W
Heligot	H-59	44° 59.644 N	116° 40.623 W
Heligot	H-61	44° 59.395 N	116° 44.857 W
Heligot	H-65	44° 57.552 N	116° 39.692 W
Heligot	H-72	44° 56.520 N	116° 41.798 W
Heligot	H-77	44° 52.742 N	116° 38.904 W
Heligot	H-85	44° 57.832 N	116° 45.781 W
Incident Command Post	Seven Devils ICP	49° 01.455 N	116° 40.828 W
Repeater	A/C Link	49° 07.169 N	116° 40.086 W
Repeater	CHD 09	49° 07.316 N	116° 40.190 W
Repeater	CHD 12	44° 51.803 N	116° 41.666 W
Staging Area	Sheepcock Staging	49° 18.217 N	116° 38.651 W

- Helispot
- Division Break
- Incident Command Post
- Drop Point
- Camp
- Staging Area
- Lookout
- Hot Spot - Spot Fire
- Mobile Weather Unit
- Repeater
- Safety Zone
- Hazard
- Dip Site
- Draft Site
- Completed Dozer Line
- Completed Hand Line
- Completed Road as Line
- Planned Road as Line
- Proposed Line
- Access Route
- Other
- Temporary Flight Restriction
- Contained
- Uncontained
- Mine Hazards
- Structures
- Campground
- Picnic Site
- Trailhead
- Boating Site
- Interpretive Visitor Center
- Lookout/Cabin
- Wildlife Viewing Site
- Interpretive Site
- Snowpark
- USFS Permanently Closed Roads
- Transmission Lines
- Bureau of Land Management (BLM)
- Bureau of Reclamation (BOR)
- Other Federal
- State
- US Forest Service (USFS)
Private; Undetermined
- USFS Wilderness

