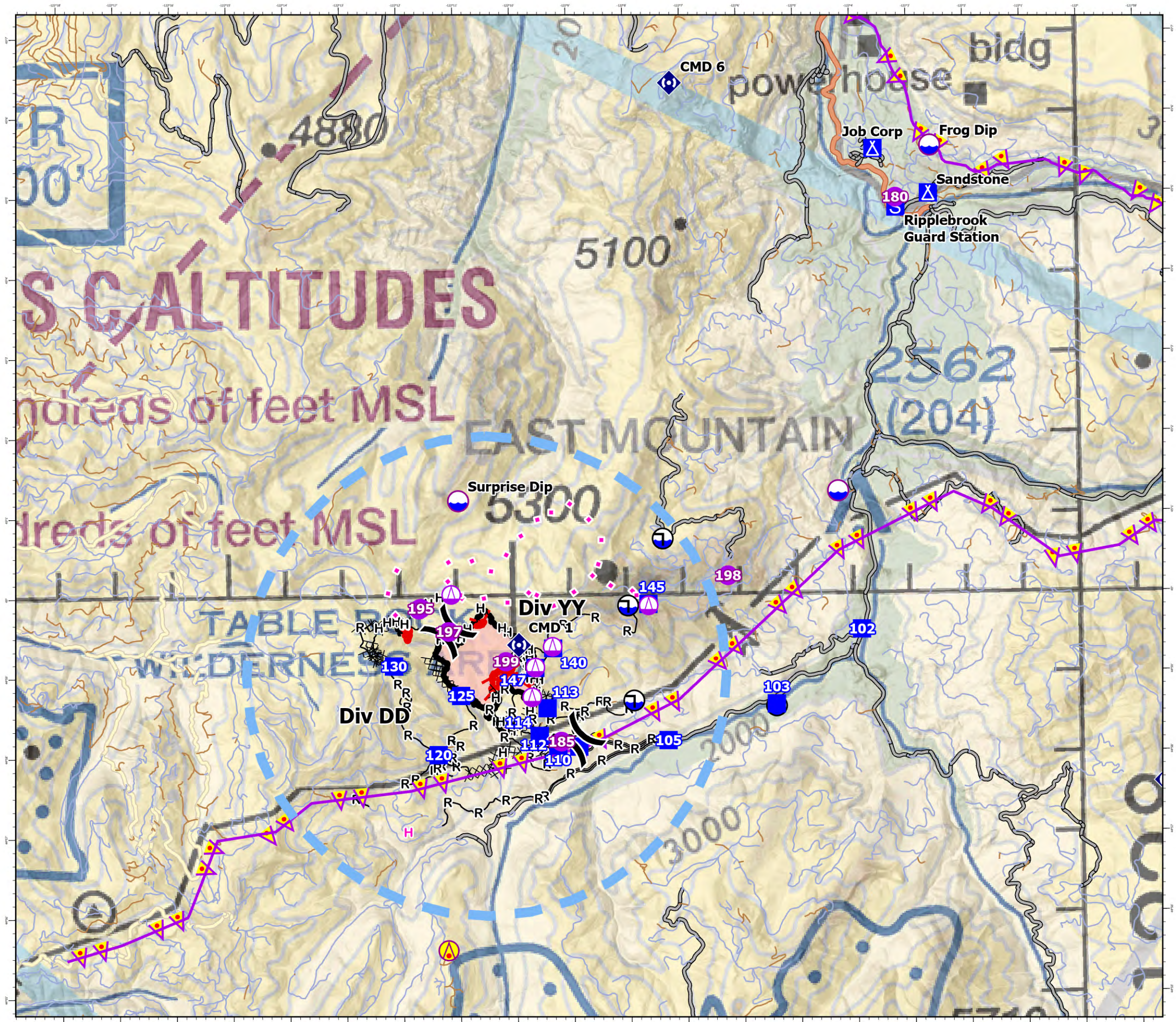


Pilot

Sandstone
 OR-MHF-000818
 702 acres
 Blister Creek
 OR-MHF-000808
 18 acres
 08/31/2024
 Acres updated
 20240827 @ 2359

FC Point Type	Label	Longitude WGS84 DDM	Latitude WGS84 DDM	Elevation (Feet)
Aerial Hazard		122° 11.211' W	44° 55.572' N	1066
Camp	Sandstone	122° 02.628' W	45° 04.984' N	486
Camp	Job Corp	122° 03.598' W	45° 05.547' N	473
Dip Site		122° 04.272' W	45° 01.276' N	455
Dip Site	Surprise Dip	122° 10.972' W	45° 01.190' N	1229
Dip Site	Frog Dip	122° 02.596' W	45° 05.583' N	1988
Drop Point	110	122° 08.881' W	44° 58.104' N	728
Drop Point	112	122° 09.250' W	44° 58.122' N	772
Drop Point	114	122° 09.576' W	44° 58.242' N	910
Drop Point	105	122° 07.308' W	44° 58.174' N	582
Drop Point	120	122° 11.360' W	44° 58.015' N	1130
Drop Point	130	122° 12.129' W	44° 59.127' N	1333
Drop Point	140	122° 09.324' W	44° 59.336' N	1287
Drop Point	145	122° 07.637' W	44° 59.883' N	1196
Drop Point	102	122° 03.879' W	44° 59.547' N	498
Drop Point	125	122° 10.953' W	44° 58.752' N	883
Drop Point	147	122° 09.641' W	44° 59.093' N	1321
Drop Point	113	122° 09.432' W	44° 58.587' N	995
Drop Point	103	122° 05.395' W	44° 58.617' N	538
Helispot	180	122° 03.211' W	45° 04.936' N	1544
Helispot	185	122° 09.193' W	44° 58.168' N	766
Helispot	195	122° 11.651' W	44° 59.853' N	1360
Helispot	197	122° 11.161' W	44° 59.558' N	1289
Helispot	198	122° 06.229' W	45° 00.230' N	1153
Helispot	199	122° 10.157' W	44° 59.175' N	1349
Repeater	CMD 5	121° 58.541' W	44° 57.611' N	1590
Repeater	CMD 6	122° 07.177' W	45° 06.391' N	1442
Repeater	CMD 1	122° 09.925' W	44° 59.386' N	1574

- Aerial Hazard
- Helispot
- Sling Site
- Division Break
- Drop Point
- Camp
- Staging Area
- Repeater
- Dip Site
- Draft Site
- Completed Dozer Line
- Completed Hand Line
- Completed Mixed Construction Line
- Completed Road as Line
- Planned Hand Line
- Proposed Line
- Aerial Hazard
- Temporary Flight Restriction
- Wildfire Daily Fire Perimeter



1:90,000 | NW IMT10 | 8/30/2024 2216
 Acres from IR
 North American 1983 Datum. LatLong Grid