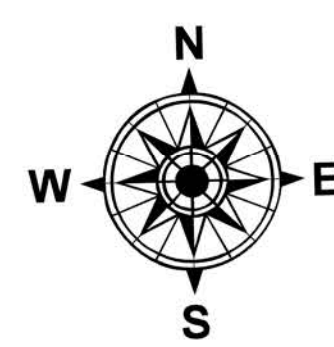
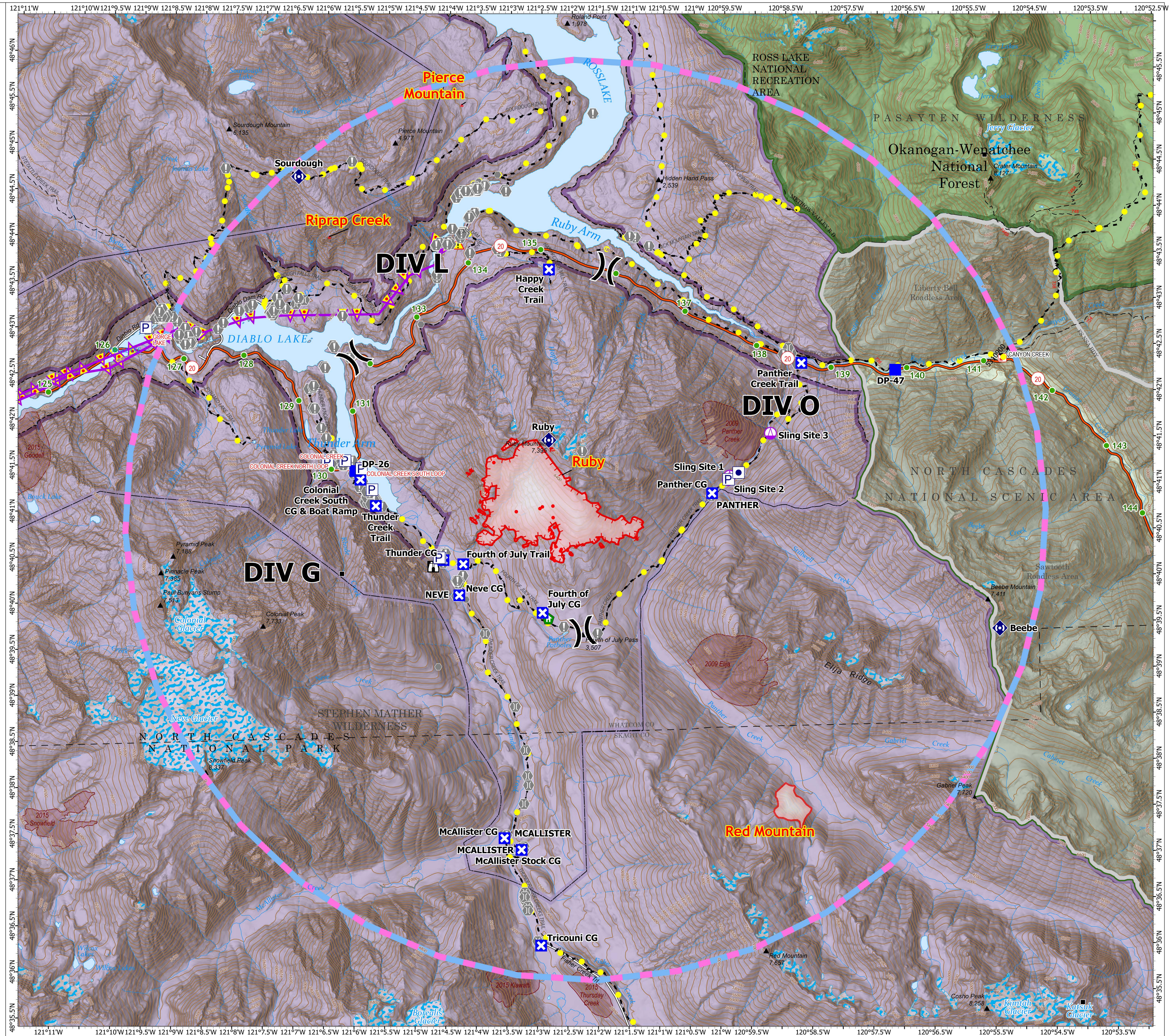


# Operations

Ruby  
WA-NCP-000285  
9/01/2024

959 acres at 08/31/2024 0215 hrs PT

- Uncontained
- Wildfire Daily Fire Perimeter
- IR Isolated Heat Source
- Structure
- Other Property
- Pump
- Sling Site
- Division Break
- Drop Point
- Closure
- Lookout
- Value at Risk
- Other
- Bridge
- Structure Wrap
- Repeater
- Hazard
- Completed Road as Line
- Highlighted Feature
- Aerial Hazard
- Temporary Flight Restriction
- Mile Markers
- Secondary Highway
- Road
- USFS Roadless Areas
- National Park Service Wilderness
- FS Wilderness Boundary
- Other Designated Boundary
- Forest Service Land
- National Park Service Lands
- Interagency Fire Perimeter History Since 2004
- Interagency Fuels Treatments



0 2  
Miles

