

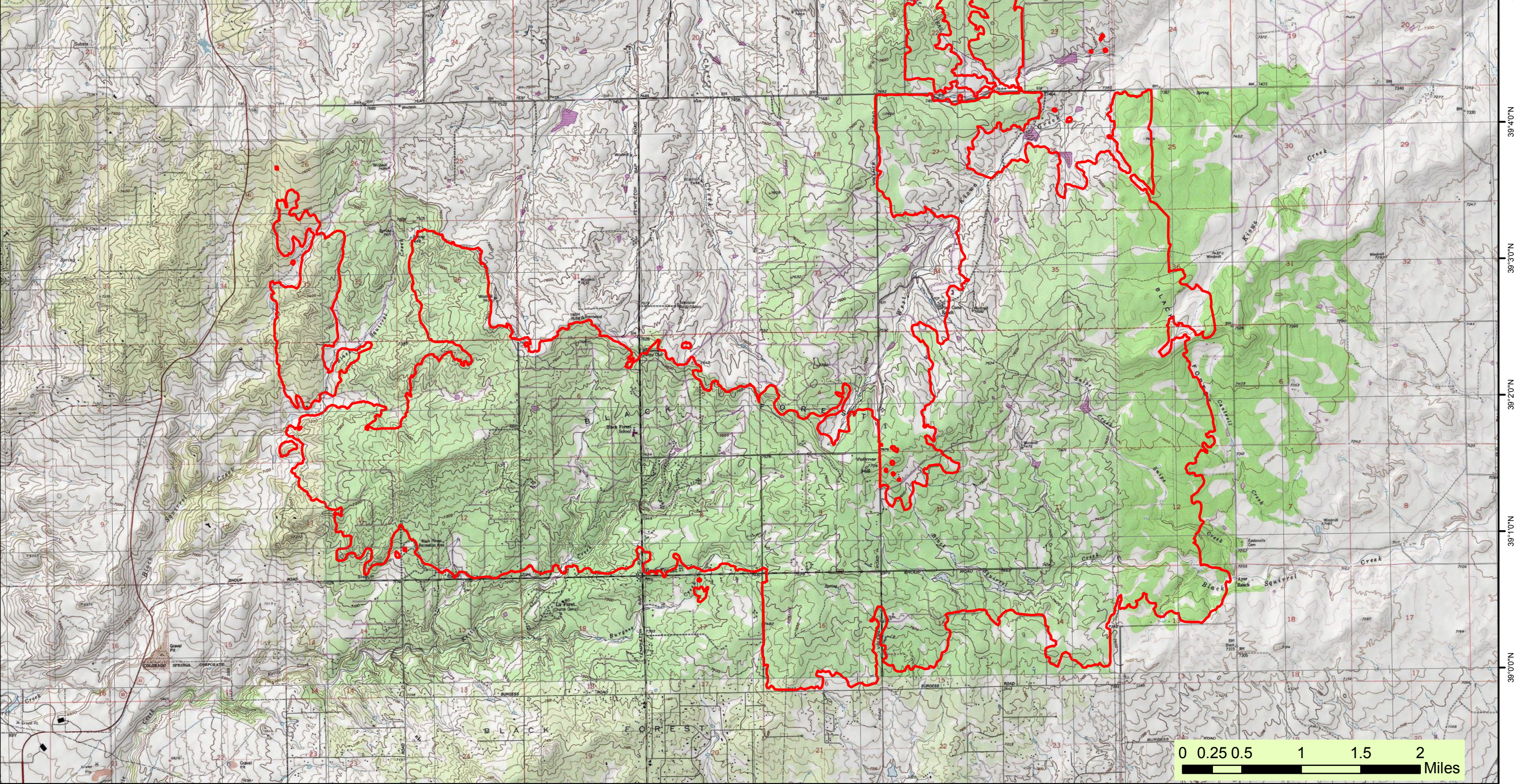


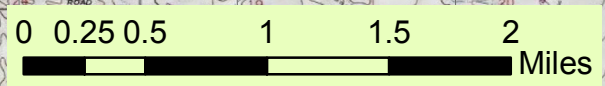
104°47'0"W 104°46'0"W 104°45'0"W 104°44'0"W 104°43'0"W 104°42'0"W 104°41'0"W 104°40'0"W 104°39'0"W 104°38'0"W 104°37'0"W 104°36'0"W 104°35'0"W 104°34'0"W

Black Forest Infrared Map
 Image Acquired June 16, 2013 at 0005 MDT
 Calculated 13,111 Acres
 IRIN M McGann

Heat_Perimeter

104°48'0"W 104°47'0"W 104°46'0"W 104°45'0"W 104°44'0"W 104°43'0"W 104°42'0"W 104°41'0"W 104°40'0"W 104°39'0"W 104°38'0"W 104°37'0"W 104°36'0"W 104°35'0"W



39°50'N
39°40'N
39°30'N
39°20'N
39°10'N
39°0'N